

# Product Datasheet

## Lyn Antibody (10A6.2) NBP2-29697

Unit Size: 0.1 ml

Aliquot and store at -20C or -80C. Avoid freeze-thaw cycles.

[www.novusbio.com](http://www.novusbio.com)



[technical@novusbio.com](mailto:technical@novusbio.com)

### Publications: 1

Protocols, Publications, Related Products, Reviews, Research Tools and Images at:  
[www.novusbio.com/NBP2-29697](http://www.novusbio.com/NBP2-29697)

Updated 5/13/2021 v.20.1

Earn rewards for product  
reviews and publications.

Submit a publication at [www.novusbio.com/publications](http://www.novusbio.com/publications)

Submit a review at [www.novusbio.com/reviews/destination/NBP2-29697](http://www.novusbio.com/reviews/destination/NBP2-29697)



**NBP2-29697**

Lyn Antibody (10A6.2)

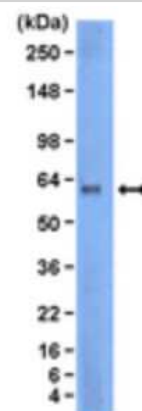
Product Information	
Unit Size	0.1 ml
Concentration	This product is unpurified. The exact concentration of antibody is not quantifiable.
Storage	Aliquot and store at -20C or -80C. Avoid freeze-thaw cycles.
Clonality	Monoclonal
Clone	10A6.2
Preservative	0.05% Sodium Azide
Isotype	IgG1 Kappa
Purity	Unpurified
Buffer	Ascites
Target Molecular Weight	58 kDa

Product Description	
Host	Mouse
Gene ID	4067
Gene Symbol	LYN
Species	Human, Mouse, Rat, Chicken
Reactivity Notes	Human, Mouse, Rat, Chicken. Please note that this antibody is reactive to Mouse and derived from the same host, Mouse. Additional Mouse on Mouse blocking steps may be required for IHC and ICC experiments. Please contact Technical Support for more information.
Specificity/Sensitivity	Recognizes the C-terminus of Lyn (V-yes-1 Yamaguchi sarcoma viral related oncogene homolog).
Immunogen	KLH conjugated linear peptide corresponding to the C-terminus of Lyn.
Notes	Relevant Entrez Gene Numbers: NP_001104567

Product Application Details	
Applications	Western Blot, Immunohistochemistry
Recommended Dilutions	Western Blot 1:500-1:1000, Immunohistochemistry
Application Notes	Western Blot dilution of this lot detected Lyn in A431 cell lysate. Use in IHC reported in scientific publication PMID: 32768227

**Images**

Western Blot: Lyn Antibody (10A6.2) [NBP2-29697] - A431 cell lysate was resolved by electrophoresis, transferred to PVDF membrane and probed with ant-Lyn, clone 10A6.2 (1:1000). Proteins were visualized using a goat anti-mouse secondary antibody conjugated to HRP and a chemiluminescent detection system. Arrow indicates Lyn (~58 kDa).



## Publications

He S, Zheng G, Yang X et al. Avian leukosis virus subgroup J induces B cell anergy mediated by Lyn inhibited BCR signal transduction Veterinary Microbiology 2020-06-01 [PMID: 32768227] (WB, IF/IHC, Chicken)



### Novus Biologicals USA

10730 E. Briarwood Avenue  
Centennial, CO 80112  
USA

Phone: 303.730.1950

Toll Free: 1.888.506.6887

Fax: 303.730.1966

nb-customerservice@bio-techne.com

### Bio-Techne Canada

21 Canmotor Ave  
Toronto, ON M8Z 4E6  
Canada

Phone: 905.827.6400

Toll Free: 855.668.8722

Fax: 905.827.6402

canada.inquires@bio-techne.com

### Bio-Techne Ltd

19 Barton Lane  
Abingdon Science Park  
Abingdon, OX14 3NB, United Kingdom

Phone: (44) (0) 1235 529449

Free Phone: 0800 37 34 15

Fax: (44) (0) 1235 533420

info.EMEA@bio-techne.com

### General Contact Information

[www.novusbio.com](http://www.novusbio.com)

Technical Support: [nb-technical@bio-techne.com](mailto:nb-technical@bio-techne.com)

Orders: [nb-customerservice@bio-techne.com](mailto:nb-customerservice@bio-techne.com)

General: [novus@novusbio.com](mailto:novus@novusbio.com)

### Limitations

This product is for research use only and is not approved for use in humans or in clinical diagnosis. Primary Antibodies are guaranteed for 1 year from date of receipt.

For more information on our 100% guarantee, please visit [www.novusbio.com/guarantee](http://www.novusbio.com/guarantee)

Earn gift cards/discounts by submitting a review: [www.novusbio.com/reviews/submit/NBP2-29697](http://www.novusbio.com/reviews/submit/NBP2-29697)

Earn gift cards/discounts by submitting a publication using this product:  
[www.novusbio.com/publications](http://www.novusbio.com/publications)

