

# Product Datasheet

## RNMT [p Tyr1235] Antibody (NL8) NBP2-29685

Unit Size: 0.1 ml

Aliquot and store at -20C or -80C. Avoid freeze-thaw cycles.

[www.novusbio.com](http://www.novusbio.com)



[technical@novusbio.com](mailto:technical@novusbio.com)

Protocols, Publications, Related Products, Reviews, Research Tools and Images at:  
[www.novusbio.com/NBP2-29685](http://www.novusbio.com/NBP2-29685)

Updated 5/13/2021 v.20.1

Earn rewards for product  
reviews and publications.

Submit a publication at [www.novusbio.com/publications](http://www.novusbio.com/publications)

Submit a review at [www.novusbio.com/reviews/destination/NBP2-29685](http://www.novusbio.com/reviews/destination/NBP2-29685)



**NBP2-29685**

RNMT [p Tyr1235] Antibody (NL8)

**Product Information**

<b>Unit Size</b>	0.1 ml
<b>Concentration</b>	This product is unpurified. The exact concentration of antibody is not quantifiable.
<b>Storage</b>	Aliquot and store at -20C or -80C. Avoid freeze-thaw cycles.
<b>Clonality</b>	Monoclonal
<b>Clone</b>	NL8
<b>Preservative</b>	0.05% Sodium Azide
<b>Isotype</b>	IgG
<b>Purity</b>	Tissue culture supernatant
<b>Buffer</b>	Tissue culture supernatant
<b>Target Molecular Weight</b>	140 kDa

**Product Description**

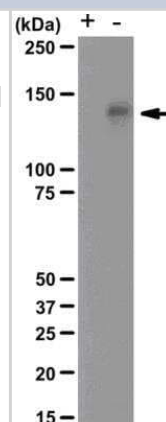
<b>Host</b>	Rabbit
<b>Gene ID</b>	8731
<b>Gene Symbol</b>	RNMT
<b>Species</b>	Human
<b>Reactivity Notes</b>	Human
<b>Specificity/Sensitivity</b>	Recognizes phosphorylated Met, Mr 140 kDa. Cross-reacts with phosphorylated EGFR.
<b>Immunogen</b>	KLH-conjugated, synthetic peptide in which pYpY corresponds to phosphorylated amino acids 1234 and 1234 of human Met/HGFR.
<b>Notes</b>	Relevant Entrez Gene Numbers: NP_000236.2

**Product Application Details**

<b>Applications</b>	Western Blot
<b>Recommended Dilutions</b>	Western Blot 1:100-1:2000

**Images**

Western Blot: RNMT [p Tyr1235] Antibody (NL8) [NBP2-29685] - Untreated (Lane -) and lambda-phosphatase treated (Lane +) RIPA lysate from A431 cells co-expressing Met/HGFR and HGF were resolved by electrophoresis, transferred to PVDF and probed with anti-phospho-Met (Tyr1234/1235), clone NL8. Arrow indicates phospho-Met (~140 kDa).





### **Novus Biologicals USA**

10730 E. Briarwood Avenue  
Centennial, CO 80112  
USA  
Phone: 303.730.1950  
Toll Free: 1.888.506.6887  
Fax: 303.730.1966  
nb-customerservice@bio-techne.com

### **Bio-Techne Canada**

21 Canmotor Ave  
Toronto, ON M8Z 4E6  
Canada  
Phone: 905.827.6400  
Toll Free: 855.668.8722  
Fax: 905.827.6402  
canada.inquires@bio-techne.com

### **Bio-Techne Ltd**

19 Barton Lane  
Abingdon Science Park  
Abingdon, OX14 3NB, United Kingdom  
Phone: (44) (0) 1235 529449  
Free Phone: 0800 37 34 15  
Fax: (44) (0) 1235 533420  
info.EMEA@bio-techne.com

### **General Contact Information**

www.novusbio.com  
Technical Support: nb-technical@bio-  
techne.com  
Orders: nb-customerservice@bio-techne.com  
General: novus@novusbio.com

### **Limitations**

This product is for research use only and is not approved for use in humans or in clinical diagnosis. Primary Antibodies are guaranteed for 1 year from date of receipt.

For more information on our 100% guarantee, please visit [www.novusbio.com/guarantee](http://www.novusbio.com/guarantee)

Earn gift cards/discounts by submitting a review: [www.novusbio.com/reviews/submit/NBP2-29685](http://www.novusbio.com/reviews/submit/NBP2-29685)

Earn gift cards/discounts by submitting a publication using this product:  
[www.novusbio.com/publications](http://www.novusbio.com/publications)

