

Product Datasheet

Ribosomal Protein S6/RPS6 [p Ser235] Antibody (MC27) NBP2-29667

Unit Size: 0.1 ml

Aliquot and store at -20C or -80C. Avoid freeze-thaw cycles.

www.novusbio.com



technical@novusbio.com

Protocols, Publications, Related Products, Reviews, Research Tools and Images at:
www.novusbio.com/NBP2-29667

Updated 5/13/2021 v.20.1

Earn rewards for product
reviews and publications.

Submit a publication at www.novusbio.com/publications

Submit a review at www.novusbio.com/reviews/destination/NBP2-29667



NBP2-29667**Ribosomal Protein S6/RPS6 [p Ser235] Antibody (MC27)**

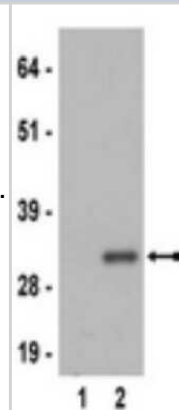
Product Information	
Unit Size	0.1 ml
Concentration	This product is unpurified. The exact concentration of antibody is not quantifiable.
Storage	Aliquot and store at -20C or -80C. Avoid freeze-thaw cycles.
Clonality	Monoclonal
Clone	MC27
Preservative	0.05% Sodium Azide
Isotype	IgG
Purity	Tissue culture supernatant
Buffer	Tissue culture supernatant
Target Molecular Weight	30 kDa

Product Description	
Host	Rabbit
Gene ID	6194
Gene Symbol	RPS6
Species	Human, Mouse, Rat
Reactivity Notes	Human, Mouse, Rat
Specificity/Sensitivity	Recognizes ribosomal protein S6 only when phosphorylated on Ser235.
Immunogen	Synthetic peptide containing the sequence RRL[pS]SL in which pS corresponds to phospho-serine at residue 235 of human ribosomal protein S6. The immunizing sequence is identical in mouse, rat, chicken and Xenopus.
Notes	Relevant Entrez Gene Numbers: NM_001010.2

Product Application Details	
Applications	Western Blot
Recommended Dilutions	Western Blot 1:500-1:2000
Application Notes	Western Blot Analysis: A given dilution of this lot detected phosphorylated ribosomal protein S6 in lysates from serum stimulated 3T3 cells.

Images

Western Blot: RPS6 [p Ser235] Antibody (MC27) [NBP2-29667] - 3T3 cell lysate from serum starved cells (lane 1), and serum-stimulated cells (lane 2) were resolved by SDS-PAGE, transferred to nitrocellulose, and probed with anti-phospho-Ribosomal Protein S6, MC27 (1:1,000 dilution). Proteins were visualized using a goat anti-rabbit secondary antibody conjugated to HRP and a chemiluminescence detection system. Arrow indicates phosphorylated ribosomal protein S6 (30 kDa).





Novus Biologicals USA

10730 E. Briarwood Avenue
Centennial, CO 80112
USA
Phone: 303.730.1950
Toll Free: 1.888.506.6887
Fax: 303.730.1966
nb-customerservice@bio-techne.com

Bio-Techne Canada

21 Canmotor Ave
Toronto, ON M8Z 4E6
Canada
Phone: 905.827.6400
Toll Free: 855.668.8722
Fax: 905.827.6402
canada.inquires@bio-techne.com

Bio-Techne Ltd

19 Barton Lane
Abingdon Science Park
Abingdon, OX14 3NB, United Kingdom
Phone: (44) (0) 1235 529449
Free Phone: 0800 37 34 15
Fax: (44) (0) 1235 533420
info.EMEA@bio-techne.com

General Contact Information

www.novusbio.com
Technical Support: nb-technical@bio-
techne.com
Orders: nb-customerservice@bio-techne.com
General: novus@novusbio.com

Limitations

This product is for research use only and is not approved for use in humans or in clinical diagnosis. Primary Antibodies are guaranteed for 1 year from date of receipt.

For more information on our 100% guarantee, please visit www.novusbio.com/guarantee

Earn gift cards/discounts by submitting a review: www.novusbio.com/reviews/submit/NBP2-29667

Earn gift cards/discounts by submitting a publication using this product:
www.novusbio.com/publications

