

Product Datasheet

KCC2/SLC12A5 [p Ser940] Antibody - Azide Free NBP2-29513

Unit Size: 0.1 ml

Store at -20C. Avoid freeze-thaw cycles.

www.novusbio.com



technical@novusbio.com

Publications: 4

Protocols, Publications, Related Products, Reviews, Research Tools and Images at:
www.novusbio.com/NBP2-29513

Updated 2/23/2025 v.20.1

Earn rewards for product
reviews and publications.

Submit a publication at www.novusbio.com/publications

Submit a review at www.novusbio.com/reviews/destination/NBP2-29513



NBP2-29513

KCC2/SLC12A5 [p Ser940] Antibody - Azide Free

Product Information	
Unit Size	0.1 ml
Concentration	Please see the vial label for concentration. If unlisted please contact technical services.
Storage	Store at -20C. Avoid freeze-thaw cycles.
Clonality	Polyclonal
Preservative	No Preservative
Isotype	IgG
Purity	Antigen Affinity-purified
Buffer	10mM HEPES (pH 7.5), 0.15M NaCl, 0.1 mg/ml BSA and 50% Glycerol
Target Molecular Weight	135 kDa

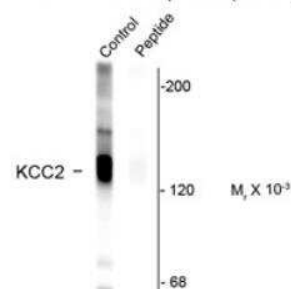
Product Description	
Host	Rabbit
Gene ID	57468
Gene Symbol	SLC12A5
Species	Human, Mouse, Rat
Reactivity Notes	Use in Human reported in scientific literature (PMID:34500023). Mouse reactivity reported in scientific literature (PMID: 30106375).
Specificity/Sensitivity	Specific for endogenous levels of the ~135 kDa KCC2/SLC12A5 protein phosphorylated at Ser940. Immunolabeling is blocked by preadsorption with the phosphopeptide used as antigen, but not by the corresponding non-phosphopeptide.
Immunogen	Synthetic phospho-peptide corresponding to amino acid residues surrounding Ser940 conjugated to KLH. Accession # Q63633
Preparation Method	Prepared from rabbit serum by affinity purification via sequential chromatography on phospho- and non-phosphopeptide affinity columns.

Product Application Details	
Applications	Western Blot, Immunoprecipitation
Recommended Dilutions	Western Blot 1:1000, Immunoprecipitation 40 uL of antibody per 1 mg lysate

Images

Western Blot: KCC2/SLC12A5 [p Ser940] Antibody [NBP2-29513] - Rat hippocampal homogenate showing specific labeling of the ~ 135k KCC2 protein (Control). Immunolabeling is blocked by preadsorption with the phospho-peptide used as antigen (Peptide) but not by the corresponding dephospho-peptide (not shown).

Anti-Phospho-Ser⁹⁴⁰ Potassium Chloride Cotransporter (KCC2)



Western blot of rat hippocampal homogenate showing specific labeling of the ~ 135k KCC2 protein (Control). Immunolabeling is blocked by preadsorption with the phospho-peptide used as antigen.

Publications

Barbour AJ, Nass SR, Hahn YK et al. Restoration of KCC2 Membrane Localization in Striatal Dopamine D2 Receptor-Expressing Medium Spiny Neurons Rescues Locomotor Deficits in HIV Tat-Transgenic Mice ASN Neuro 2021-08-27 [PMID: 34445881]

Toritsuka M, Yoshino H, Makinodan M et al. Developmental dysregulation of excitatory-to-inhibitory GABA-polarity switch may underlie schizophrenia pathology: A monozygotic-twin discordant case analysis in human iPS cell-derived neurons Neurochemistry international 2021-09-06 [PMID: 34500023] (WB, Human)

Li J, Zhang L, Xu C et al. Prolonged Use of NMDAR Antagonist Develops Analgesic Tolerance in Neuropathic Pain via Nitric Oxide Reduction-Induced GABAergic Disinhibition Neurotherapeutics 2020-07-06 [PMID: 32632774]

Dumon C, Diabira D, Chudotvorova I et al. The adipocyte hormone leptin sets the emergence of hippocampal inhibition in mice Elife 2018-08-15 [PMID: 30106375] (WB, Mouse)





Novus Biologicals USA

10730 E. Briarwood Avenue
Centennial, CO 80112
USA
Phone: 303.730.1950
Toll Free: 1.888.506.6887
Fax: 303.730.1966
nb-customerservice@bio-techne.com

Bio-Techne Canada

21 Canmotor Ave
Toronto, ON M8Z 4E6
Canada
Phone: 905.827.6400
Toll Free: 855.668.8722
Fax: 905.827.6402
canada.inquires@bio-techne.com

Bio-Techne Ltd

19 Barton Lane
Abingdon Science Park
Abingdon, OX14 3NB, United Kingdom
Phone: (44) (0) 1235 529449
Free Phone: 0800 37 34 15
Fax: (44) (0) 1235 533420
info.EMEA@bio-techne.com

General Contact Information

www.novusbio.com
Technical Support: nb-technical@bio-techne.com
Orders: nb-customerservice@bio-techne.com
General: novus@novusbio.com

Products Related to NBP2-29513

HAF008	Goat anti-Rabbit IgG Secondary Antibody [HRP]
NB7160	Goat anti-Rabbit IgG (H+L) Secondary Antibody [HRP]
NBP2-24891	Rabbit IgG Isotype Control
NBP2-49674PEP	KCC2/SLC12A5 Recombinant Protein Antigen

Limitations

This product is for research use only and is not approved for use in humans or in clinical diagnosis. Primary Antibodies are guaranteed for 1 year from date of receipt.

For more information on our 100% guarantee, please visit www.novusbio.com/guarantee

Earn gift cards/discounts by submitting a review: www.novusbio.com/reviews/submit/NBP2-29513

Earn gift cards/discounts by submitting a publication using this product:
www.novusbio.com/publications

