

# Product Datasheet

## Human Breast Tissue Lysate (Adult Normal) NBP2-28015

Unit Size: 0.1 mg

Store at -20C short term. Aliquot and store at -70C long term. Avoid freeze-thaw cycles.

[www.novusbio.com](http://www.novusbio.com)



[technical@novusbio.com](mailto:technical@novusbio.com)

Protocols, Publications, Related Products, Reviews, Research Tools and Images at:  
[www.novusbio.com/NBP2-28015](http://www.novusbio.com/NBP2-28015)

Updated 10/23/2024 v.20.1

Earn rewards for product  
reviews and publications.

Submit a publication at [www.novusbio.com/publications](http://www.novusbio.com/publications)

Submit a review at [www.novusbio.com/reviews/destination/NBP2-28015](http://www.novusbio.com/reviews/destination/NBP2-28015)



**NBP2-28015****Human Breast Tissue Lysate (Adult Normal)**

<b>Product Information</b>	
<b>Unit Size</b>	0.1 mg
<b>Concentration</b>	1 mg/ml
<b>Storage</b>	Store at -20C short term. Aliquot and store at -70C long term. Avoid freeze-thaw cycles.
<b>Product Description</b>	
<b>Description</b>	The vial is provided with a 10% overfill. Maximum recovery can be obtained by centrifuging the vial briefly to collect any solution on the cap and tube sides.
<b>Species</b>	Human
<b>Specificity/Sensitivity</b>	Sex:Female Age :60 Grade:3 Stage:II TNM:T2N1M0 Clinical Tissue Human Breast Normal Tissue Lysate (Matched), Soluble protein fraction
<b>Preparation Method</b>	Tissue specimens are homogenized in modified RIPA buffer to obtain the soluble proteins, and centrifuged to clarify. The pellet was further extracted with a second buffer to obtain the less soluble protein fraction. The lysate solution may appear turbid at cold temperatures due to insolubility of buffer components. The solution should clear upon warming to room temperature.
<b>Notes</b>	The vial is provided with a 10% overfill. Maximum recovery can be obtained by centrifuging the vial briefly to collect any solution on the cap and tube sides.
<b>Lysate Type</b>	Tissue
<b>Lysate Tissue</b>	Breast
<b>Lysate Tissue Condition</b>	Normal
<b>Lysate Life Stage</b>	Adult
<b>Product Application Details</b>	
<b>Application Notes</b>	These lysates are proteomic discovery tools. Researchers should validate and optimize for individual use. Potential applications MAY include WB, immunoprecipitation, protein-protein interactions, ligand binding, ELISA. Note: For use in 1D and 2D gel electrophoresis, the addition of a denaturing gel loading buffer with reducing agents may be required.

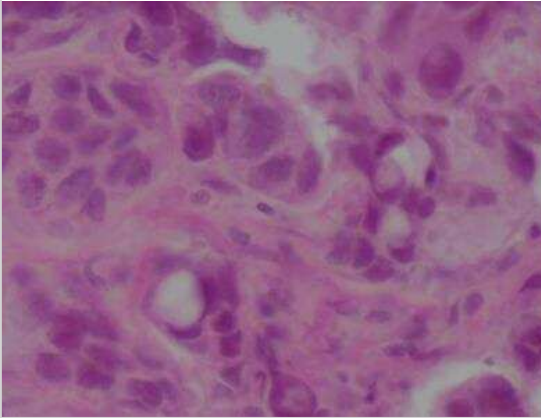


Images

Human Breast Tissue Lysate (Adult Normal) [NBP2-28015]

Location:	Right breast.					
Gross findings:	Tumor size 3.0 X 2.0 cm, ill demarcated. Cut section firm, gray/white.					
Histologic pattern:	Cell distribution:	+/-	Structure / Pattern:	+/-		
	Diffuse:	-	Streaming:	-		
	Mosaic:	+	Storiform:	+		
	Necrosis:	-	Fibrosis:	-		
	Lymphocytic infiltration:	-	Palisading:	-		
	Vascular invasion:	+	Cystic degeneration:	-		
	Clustered:	+	Bleeding:	+		
	Axillary formation:	-	Myoid change:	+		
	Indian file:	-	Psamomma body:	-		
Cellular differentiation:	Squamous:	+/-	Adenomatous:	+/-	Sarcomatous:	+/-
	Squamous:	-	Glandular cell:	+	Round cell:	-
	Spindle:	+	Cell stratification:	+	Spindle cell:	-
	Keratin:	-	Secretion:	+	Leiomyoblast:	-
	Desmosome:	-	Intracellular vacuole:	+	Lipoblast:	-
	Psalt:	-	Glandular formation:	-	Rhabdomyoblast:	-
Nuclear atypia:	Nuclear Appearance:	0	I	II	III	
	Anaplasia:				X	
	Hyperchromatism:				X	
	Nuclear prominent:			X		
	Multinucleated giant cell:				X	
	Mitotic activity:				X	
	Nuclear grade:				X	

Human Breast Tissue Lysate (Adult Normal) [NBP2-28015]



## Procedures

### Product Handling Protocol (NBP2-28015)

Product Handling Protocol (NBP2-28015):

Lysate Preparation: Tissue specimens are homogenized in modified RIPA buffer to obtain the soluble proteins, and centrifuged to clarify. The pellet was further extracted with a second buffer to obtain the less soluble protein fraction. The lysate solution may appear turbid at cold temperatures due to insolubility of buffer components. The solution should clear upon warming to room temperature.

Extraction 1: PBS, pH 7.4 1 ug/ml Aprotinin 1 mM NaF

Modified RIPA Buffer: 1 mM EDTA 1 ug/ml Pepstatin-A 0.1% SDS

0.25% Na deoxycholate 1 ug/ml Leupeptin 1 mM PMSF

1 mM Na<sub>3</sub>VO<sub>4</sub>

Extraction 2: PBS, pH 7.4, 5.0 M Urea, 2.0 M Thiourea, 50mM DTT, 0.1% SDS





### **Novus Biologicals USA**

10730 E. Briarwood Avenue  
Centennial, CO 80112  
USA  
Phone: 303.730.1950  
Toll Free: 1.888.506.6887  
Fax: 303.730.1966  
nb-customerservice@bio-techne.com

### **Bio-Techne Canada**

21 Canmotor Ave  
Toronto, ON M8Z 4E6  
Canada  
Phone: 905.827.6400  
Toll Free: 855.668.8722  
Fax: 905.827.6402  
canada.inquires@bio-techne.com

### **Bio-Techne Ltd**

19 Barton Lane  
Abingdon Science Park  
Abingdon, OX14 3NB, United Kingdom  
Phone: (44) (0) 1235 529449  
Free Phone: 0800 37 34 15  
Fax: (44) (0) 1235 533420  
info.EMEA@bio-techne.com

### **General Contact Information**

www.novusbio.com  
Technical Support: nb-technical@bio-  
techne.com  
Orders: nb-customerservice@bio-techne.com  
General: novus@novusbio.com

### **Products Related to NBP2-28015**

---

NBP2-30212	Human Breast Tissue MicroArray (Cancer)
------------	---

---

### **Limitations**

This product is for research use only and is not approved for use in humans or in clinical diagnosis. Lysates are guaranteed for 6 months from date of receipt.

For more information on our 100% guarantee, please visit [www.novusbio.com/guarantee](http://www.novusbio.com/guarantee)

Earn gift cards/discounts by submitting a review: [www.novusbio.com/reviews/submit/NBP2-28015](http://www.novusbio.com/reviews/submit/NBP2-28015)

Earn gift cards/discounts by submitting a publication using this product:  
[www.novusbio.com/publications](http://www.novusbio.com/publications)

