

Product Datasheet

Human Breast Tissue Lysate (Adult Normal) NBP2-27999

Unit Size: 0.1 mg

Store at -20C short term. Aliquot and store at -70C long term. Avoid freeze-thaw cycles.

www.novusbio.com



technical@novusbio.com

Protocols, Publications, Related Products, Reviews, Research Tools and Images at:
www.novusbio.com/NBP2-27999

Updated 10/23/2024 v.20.1

Earn rewards for product
reviews and publications.

Submit a publication at www.novusbio.com/publications

Submit a review at www.novusbio.com/reviews/destination/NBP2-27999



NBP2-27999**Human Breast Tissue Lysate (Adult Normal)**

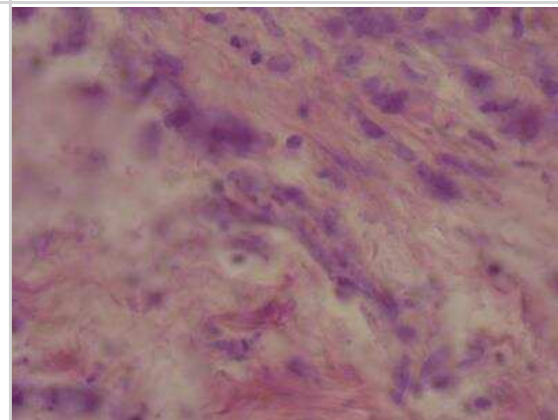
Product Information	
Unit Size	0.1 mg
Concentration	1 mg/ml
Storage	Store at -20C short term. Aliquot and store at -70C long term. Avoid freeze-thaw cycles.
Product Description	
Description	The vial is provided with a 10% overfill. Maximum recovery can be obtained by centrifuging the vial briefly to collect any solution on the cap and tube sides.
Species	Human
Specificity/Sensitivity	Sex:Female Age :47 Grade:3 Stage:IV TNM:T4N1M0 Clinical Tissue Human Breast Normal Tissue Lysate (Matched), Soluble protein fraction
Preparation Method	Tissue specimens are homogenized in modified RIPA buffer to obtain the soluble proteins, and centrifuged to clarify. The pellet was further extracted with a second buffer to obtain the less soluble protein fraction. The lysate solution may appear turbid at cold temperatures due to insolubility of buffer components. The solution should clear upon warming to room temperature.
Notes	The vial is provided with a 10% overfill. Maximum recovery can be obtained by centrifuging the vial briefly to collect any solution on the cap and tube sides.
Lysate Type	Tissue
Lysate Tissue	Breast
Lysate Tissue Condition	Normal
Lysate Life Stage	Adult
Product Application Details	
Application Notes	These lysates are proteomic discovery tools. Researchers should validate and optimize for individual use. Potential applications MAY include WB, immunoprecipitation, protein-protein interactions, ligand binding, ELISA. Note: For use in 1D and 2D gel electrophoresis, the addition of a denaturing gel loading buffer with reducing agents may be required.

Images

Human Breast Tissue Lysate (Adult Normal) [NBP2-27999]

Location:	Bilateral					
Gross findings:	Tumor size 2 x 2 cm, and 3 x 2 cm, ill demarcated. Cut section firm and gray/white.					
Histologic pattern:	Cell distribution:	+/-	Structure / Pattern:	+/-		
	Diffuse:	+	Streaming:	-		
	Mosaic:	+	Stariform:	-		
	Necrosis:	-	Fibrosis:	-		
	Lymphocytic infiltration:	+	Proliferating:	-		
	Vascular invasion:	+	Cystic degeneration:	+		
	Clusterized:	+	Bleeding:	-		
	Alveolar formation:	+	Myxoid change:	+		
	Indian file:	-	Pseudomoma body:	-		
Cellular differentiation:	Squamous:	+/-	Adenomatous:	+/-	Sarcomatous:	+/-
	Squamous:	-	Glandular cell:	+	Round cell:	-
	Spindle:	-	Cell stratification:	+	Spindle cell:	-
	Keratin:	-	Secretion:	-	Lipomyoblast:	-
	Desmosome:	-	Intracellular vacuole:	+	Lipoblast:	-
	Pearl:	-	Glandular formation:	+	Rhabdomyoblast:	-
Nuclear atypia:	Nuclear Appearance:	0	I	II	III	
	Anisonucleosis:				X	
	Hyperchromatism:				X	
	Nucleolar prominent:			X		
	Multinucleated giant cell:				X	
	Mitotic activity:				X	
	Nuclear grade:				X	

Human Breast Tissue Lysate (Adult Normal) [NBP2-27999]



Procedures

Product Handling Protocol (NBP2-27999)

Product Handling Protocol (NBP2-27999):

Lysate Preparation: Tissue specimens are homogenized in modified RIPA buffer to obtain the soluble proteins, and centrifuged to clarify. The pellet was further extracted with a second buffer to obtain the less soluble protein fraction. The lysate solution may appear turbid at cold temperatures due to insolubility of buffer components. The solution should clear upon warming to room temperature.

Extraction 1: PBS, pH 7.4 1 ug/ml Aprotinin 1 mM NaF

Modified RIPA Buffer: 1 mM EDTA 1 ug/ml Pepstatin-A 0.1% SDS

0.25% Na deoxycholate 1 ug/ml Leupeptin 1 mM PMSF

1 mM Na₃VO₄

Extraction 2: PBS, pH 7.4, 5.0 M Urea, 2.0 M Thiourea, 50mM DTT, 0.1% SDS





Novus Biologicals USA

10730 E. Briarwood Avenue
Centennial, CO 80112
USA
Phone: 303.730.1950
Toll Free: 1.888.506.6887
Fax: 303.730.1966
nb-customerservice@bio-techne.com

Bio-Techne Canada

21 Canmotor Ave
Toronto, ON M8Z 4E6
Canada
Phone: 905.827.6400
Toll Free: 855.668.8722
Fax: 905.827.6402
canada.inquires@bio-techne.com

Bio-Techne Ltd

19 Barton Lane
Abingdon Science Park
Abingdon, OX14 3NB, United Kingdom
Phone: (44) (0) 1235 529449
Free Phone: 0800 37 34 15
Fax: (44) (0) 1235 533420
info.EMEA@bio-techne.com

General Contact Information

www.novusbio.com
Technical Support: nb-technical@bio-
techne.com
Orders: nb-customerservice@bio-techne.com
General: novus@novusbio.com

Products Related to NBP2-27999

NBP2-30212	Human Breast Tissue MicroArray (Cancer)
------------	---

Limitations

This product is for research use only and is not approved for use in humans or in clinical diagnosis. Lysates are guaranteed for 6 months from date of receipt.

For more information on our 100% guarantee, please visit www.novusbio.com/guarantee

Earn gift cards/discounts by submitting a review: www.novusbio.com/reviews/submit/NBP2-27999

Earn gift cards/discounts by submitting a publication using this product:
www.novusbio.com/publications

