

Product Datasheet

Dectin-2/CLEC6A Antibody (3D1) [PE] NBP2-27159PE

Unit Size: 0.1 ml

Store at 4C in the dark.

www.novusbio.com



technical@novusbio.com

Protocols, Publications, Related Products, Reviews, Research Tools and Images at:
www.novusbio.com/NBP2-27159PE

Updated 10/23/2024 v.20.1

Earn rewards for product
reviews and publications.

Submit a publication at www.novusbio.com/publications

Submit a review at www.novusbio.com/reviews/destination/NBP2-27159PE



NBP2-27159PE

Dectin-2/CLEC6A Antibody (3D1) [PE]

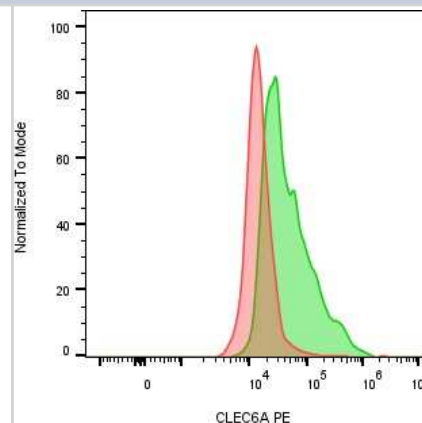
Product Information	
Unit Size	0.1 ml
Concentration	Please see the vial label for concentration. If unlisted please contact technical services.
Storage	Store at 4C in the dark.
Clonality	Monoclonal
Clone	3D1
Preservative	0.05% Sodium Azide
Isotype	IgG3 Kappa
Conjugate	PE
Purity	Protein G purified
Buffer	PBS

Product Description	
Host	Mouse
Gene ID	93978
Gene Symbol	CLEC6A
Species	Human, Primate
Reactivity Notes	Bovine, Sheep (83%), Mouse (65%), Rat (52%).
Immunogen	A portion of amino acids 75-139 of human Dectin-2 was used as the immunogen for the antibody. 90-106
Notes	This conjugate is made on demand. Actual recovery may vary from the stated volume of this product. The volume will be greater than or equal to the unit size stated on the datasheet.

Product Application Details	
Applications	Western Blot, Flow Cytometry, Flow (Cell Surface), Immunohistochemistry, Immunohistochemistry-Paraffin, CyTOF-ready
Recommended Dilutions	Western Blot, Flow Cytometry, Immunohistochemistry, Immunohistochemistry-Paraffin, Flow (Cell Surface), CyTOF-ready
Application Notes	Optimal dilution of this antibody should be experimentally determined.

Images

Flow Cytometry: Mouse Monoclonal Dectin-2/CLEC6A Antibody (3D1) [PE] [NBP2-27159PE] - Dectin-2/CLEC6A expression on human monocyte-derived macrophages. Macrophages were treated with 10 µg/ml of the Dectin-2/CLEC6A Antibody (3D1) [PE] (catalog # NBP2-27159PE) (green) or mouse IgG3 PE isotype control antibody (red) for 30 minutes on ice. Image from a verified customer review.





Novus Biologicals USA

10730 E. Briarwood Avenue
Centennial, CO 80112
USA
Phone: 303.730.1950
Toll Free: 1.888.506.6887
Fax: 303.730.1966
nb-customerservice@bio-techne.com

Bio-Techne Canada

21 Canmotor Ave
Toronto, ON M8Z 4E6
Canada
Phone: 905.827.6400
Toll Free: 855.668.8722
Fax: 905.827.6402
canada.inquires@bio-techne.com

Bio-Techne Ltd

19 Barton Lane
Abingdon Science Park
Abingdon, OX14 3NB, United Kingdom
Phone: (44) (0) 1235 529449
Free Phone: 0800 37 34 15
Fax: (44) (0) 1235 533420
info.EMEA@bio-techne.com

General Contact Information

www.novusbio.com
Technical Support: nb-technical@bio-techne.com
Orders: nb-customerservice@bio-techne.com
General: novus@novusbio.com

Products Related to NBP2-27159PE

NBP2-27159APC	Dectin-2/CLEC6A Antibody (3D1) [Allophycocyanin]
210-TA-005	TNF-alpha [Unconjugated]
3114-DC-050	Dectin-2/CLEC6A [Unconjugated]
1290-IL-010	IL-23A/IL-23 P19 [Unconjugated]

Limitations

This product is for research use only and is not approved for use in humans or in clinical diagnosis. Primary Antibodies are guaranteed for 1 year from date of receipt.

For more information on our 100% guarantee, please visit www.novusbio.com/guarantee

Earn gift cards/discounts by submitting a review: www.novusbio.com/reviews/submit/NBP2-27159PE

Earn gift cards/discounts by submitting a publication using this product:
www.novusbio.com/publications

