

Product Datasheet

MLH1 Antibody (G168-15) NBP2-26412

Unit Size: 0.25 ml

Store at 4C. Do not freeze.

www.novusbio.com



technical@novusbio.com

Protocols, Publications, Related Products, Reviews, Research Tools and Images at:
www.novusbio.com/NBP2-26412

Updated 3/30/2022 v.20.1

Earn rewards for product
reviews and publications.

Submit a publication at www.novusbio.com/publications

Submit a review at www.novusbio.com/reviews/destination/NBP2-26412



NBP2-26412

MLH1 Antibody (G168-15)

Product Information

Unit Size	0.25 ml
Concentration	This product is unpurified. The exact concentration of antibody is not quantifiable.
Storage	Store at 4C. Do not freeze.
Clonality	Monoclonal
Clone	G168-15
Preservative	0.09% Sodium Azide
Isotype	IgG1
Purity	Tissue culture supernatant
Buffer	Tissue culture supernatant

Product Description

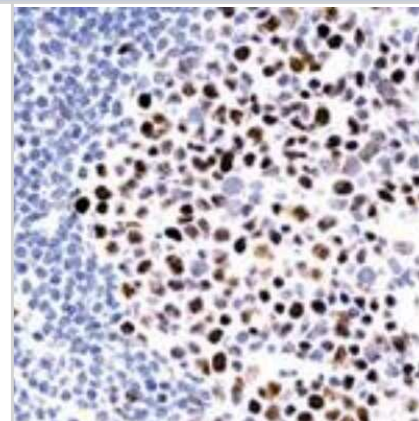
Host	Mouse
Gene ID	4292
Gene Symbol	MLH1
Species	Human, Rat, Hamster
Reactivity Notes	Hamster, Human, Rat
Specificity/Sensitivity	The G168-15 antibody recognizes human and mouse MLH1 (80-85kDa).
Immunogen	Full length recombinant MLH.

Product Application Details

Applications	Immunohistochemistry, Immunohistochemistry-Paraffin
Recommended Dilutions	Immunohistochemistry, Immunohistochemistry-Paraffin 1:25-1:50

Images

Immunohistochemistry-Paraffin: MLH1 Antibody (G168-15) [NBP2-26412] - Staining of human tonsil.





Novus Biologicals USA

10730 E. Briarwood Avenue
Centennial, CO 80112
USA

Phone: 303.730.1950
Toll Free: 1.888.506.6887
Fax: 303.730.1966
novus@novusbio.com

Bio-Techne Canada

21 Canmotor Ave
Toronto, ON M8Z 4E6
Canada

Phone: 905.827.6400
Toll Free: 855.668.8722
Fax: 905.827.6402
canada.inquires@bio-techne.com

Bio-Techne Ltd

19 Barton Lane
Abingdon Science Park
Abingdon, OX14 3NB, United Kingdom
Phone: (44) (0) 1235 529449
Free Phone: 0800 37 34 15
Fax: (44) (0) 1235 533420
info.EMEA@bio-techne.com

General Contact Information

www.novusbio.com
Technical Support: technical@novusbio.com
Orders: orders@novusbio.com
General: novus@novusbio.com

Limitations

This product is for research use only and is not approved for use in humans or in clinical diagnosis. Primary Antibodies are guaranteed for 1 year from date of receipt.

For more information on our 100% guarantee, please visit www.novusbio.com/guarantee

Earn gift cards/discounts by submitting a review: www.novusbio.com/reviews/submit/NBP2-26412

Earn gift cards/discounts by submitting a publication using this product:
www.novusbio.com/publications

