

Product Datasheet

Intracellular Staining Kit NBP2-26248

Unit Size: 1 Kit

Store at 4C. Do not freeze.

www.novusbio.com



technical@novusbio.com

Publications: 3

Protocols, Publications, Related Products, Reviews, Research Tools and Images at:
www.novusbio.com/NBP2-26248

Updated 2/27/2023 v.20.1

Earn rewards for product
reviews and publications.

Submit a publication at www.novusbio.com/publications

Submit a review at www.novusbio.com/reviews/destination/NBP2-26248



NBP2-26248**Intracellular Staining Kit****Product Information**

Unit Size	1 Kit
Concentration	Concentration is not relevant for this product. Please see the protocols for proper use of this product.
Storage	Store at 4C. Do not freeze.

Product Description

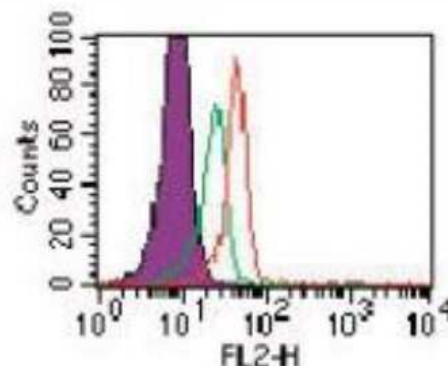
Description	This kit is optimized for intracellular staining of cells in flow cytometric or immunocytochemical applications. It is designed and optimized to minimize non-specific staining while maximizing signal-to-noise ratio for clear and consistent data.
Kit Components	1X Staining buffer (2 x 60 mL), 1X Fixation buffer (1 x 60 mL), 10X Permeabilization buffer (2 x 60 mL)

Product Application Details

Applications	Flow Cytometry
Recommended Dilutions	Flow Cytometry
Application Notes	Fixation buffer is used to "fix" the cells/cellular proteins prior to permeabilization. Permeabilization buffer permeabilizes the cell membrane, allowing the detecting antibodies access to intracellular proteins.

Images

Flow Cytometry: Intracellular Staining Kit [NBP2-26248] - TLR3 in human PBMCs using anti-TLR3 monoclonal antibody and Intracellular Staining Flow Kit. The shaded histogram represents cells without antibody; green represents an isotype control; red represents anti-TLR3 antibody.

**Publications**

Klonowska-Szymczyk A, Wolska A, Robak T. Expression of Toll-Like Receptors 3, 7, and 9 in Peripheral Blood Mononuclear Cells from Patients with Systemic Lupus Erythematosus. Mediators Inflamm 2014-04-03 [PMID: 24692849]

Nasr AS, Fawzy SM, Gheita TA, El-Khateeb E. Expression of Toll-like receptors 3 and 9 in Egyptian systemic lupus erythematosus patients. Z Rheumatol. 2015-12-17 [PMID: 26680366] (FLOW)

Burgener IA, Jungi TW. Antibodies specific for human or murine Toll-like receptors detect canine leukocytes by flow cytometry. Vet Immunol Immunopathol. 2008-07-15 [PMID: 18439687] (Flow Cytometry Control, Canine)

Details:

Canine (dog) PBMC subpopulations: 1. 10083K [IC-Flow (Intracellular Staining Flow Assay) Kit.



Novus Biologicals USA

10730 E. Briarwood Avenue
Centennial, CO 80112
USA
Phone: 303.730.1950
Toll Free: 1.888.506.6887
Fax: 303.730.1966
nb-customerservice@bio-techne.com

Bio-Techne Canada

21 Canmotor Ave
Toronto, ON M8Z 4E6
Canada
Phone: 905.827.6400
Toll Free: 855.668.8722
Fax: 905.827.6402
canada.inquires@bio-techne.com

Bio-Techne Ltd

19 Barton Lane
Abingdon Science Park
Abingdon, OX14 3NB, United Kingdom
Phone: (44) (0) 1235 529449
Free Phone: 0800 37 34 15
Fax: (44) (0) 1235 533420
info.EMEA@bio-techne.com

General Contact Information

www.novusbio.com
Technical Support: nb-technical@bio-
techne.com
Orders: nb-customerservice@bio-techne.com
General: novus@novusbio.com

Limitations

This product is for research use only and is not approved for use in humans or in clinical diagnosis. Kits are guaranteed for 6 months from date of receipt.

For more information on our 100% guarantee, please visit www.novusbio.com/guarantee

Earn gift cards/discounts by submitting a review: www.novusbio.com/reviews/submit/NBP2-26248

Earn gift cards/discounts by submitting a publication using this product:
www.novusbio.com/publications

