

Product Datasheet

TLR Screening Antibody Pack

NBP2-25083

Unit Size: 11 Vials

Store at 4C short term. Aliquot and store at -20C long term. Avoid freeze-thaw cycles.

www.novusbio.com



technical@novusbio.com

Protocols, Publications, Related Products, Reviews, Research Tools and Images at:
www.novusbio.com/NBP2-25083

Updated 4/13/2025 v.20.1

Earn rewards for product
reviews and publications.

Submit a publication at www.novusbio.com/publications

Submit a review at www.novusbio.com/reviews/destination/NBP2-25083



NBP2-25083**TLR Screening Antibody Pack**

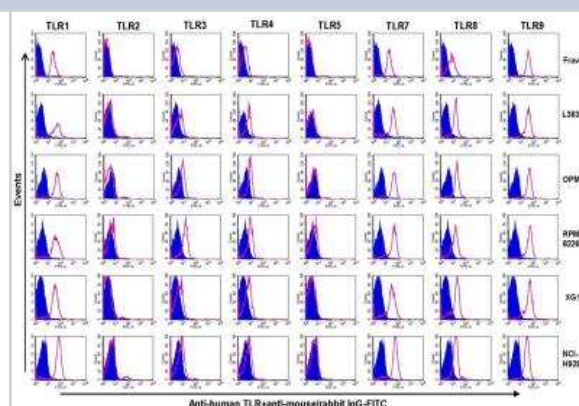
Product Information	
Unit Size	11 Vials
Concentration	Concentration of individual antibodies may be found on the vial label. If unlisted please contact technical services.
Storage	Store at 4C short term. Aliquot and store at -20C long term. Avoid freeze-thaw cycles.

Product Description	
Description	This pack contains 1 vial each of: NB100-56722SS (0.025 mg), NB100-56723SS (0.025 mg), NB100-56563SS (0.025 mg), NB100-56720SS (0.025 mg), NBP2-24729SS (0.025 mg), NBP2-24827SS (0.025 mg), NBP2-24875SS (0.025 mg), NBP2-24906SS (0.025 mg), NBP2-24917SS (0.025 mg).
Species	Human, Mouse
Reactivity Notes	See individual datasheets of components for their validated species
Immunogen	See individual datasheets.
Kit Components	NB100-56722: TLR2 Antibody (TL2.1) - BSA Free, NB100-56723: TLR4 Antibody (HTA125) - BSA Free, NB100-56563: TLR1 Antibody - BSA Free, NB100-56720: TLR2 Antibody - BSA Free, NBP2-24729: TLR9 Antibody (26C593.2) - BSA Free, NBP2-24827: TLR5 Antibody - BSA Free, NBP2-24875: TLR3 Antibody (40C1285.6) - BSA Free, NBP2-24906: TLR7 Antibody - BSA Free, NBP2-24917: TLR8 Antibody (44C143) - BSA Free, NL004: Donkey anti-Rabbit IgG Secondary Antibody [NL557], NL007: Donkey anti-Mouse IgG Secondary Antibody [NL557]
Notes	This pack contains 1 vial each of: NB100-56722SS (0.025 mg), NB100-56723SS (0.025 mg), NB100-56563SS (0.025 mg), NB100-56720SS (0.025 mg), NBP2-24729SS (0.025 mg), NBP2-24827SS (0.025 mg), NBP2-24875SS (0.025 mg), NBP2-24906SS (0.025 mg), NBP2-24917SS (0.025 mg).

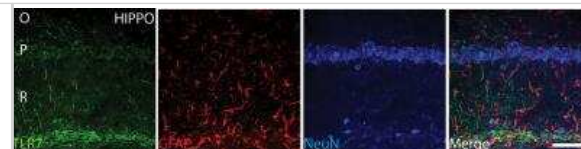
Product Application Details	
Applications	Western Blot, Flow Cytometry, Immunocytochemistry/ Immunofluorescence, Immunohistochemistry, Immunohistochemistry-Paraffin, Immunoprecipitation
Recommended Dilutions	Western Blot, Flow Cytometry, Immunohistochemistry, Immunocytochemistry/ Immunofluorescence, Immunoprecipitation, Immunohistochemistry-Paraffin
Application Notes	See individual datasheets of components for their validated applications

Images

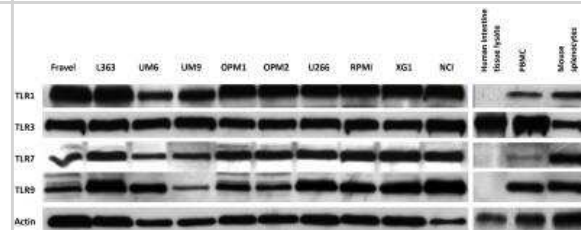
Flow Cytometry: TLR Screening Antibody Pack [NBP2-25083] - Expression of TLRs in Fravel, L363, OPM1, RPMI8226, XG1, and NCI-H929 as determined by flow cytometry. HCMs were stained using an intracellular staining protocol with TLR-specific antibodies followed by relevant secondary fluorescent-conjugated antibodies. Filled histograms (purple) represent the isotype controls and the open histograms (red) indicate specific antibodies. Data are representative for analysis of ≥ 2 independent experiments. Image collected and cropped by CiteAb from the following publication (<https://doi.org/10.1371/journal.pone.0060671>) licensed under a CC-BY license. TLR1 Antibody [NB100-56563], TLR2 Antibody (TL2.1) [NB100-56722], TLR3 Antibody [NBP2-24875], TLR7 Antibody [NBP2-24906], TLR8 Antibody [NBP2-24917], TLR9 Antibody [NBP2-24729]



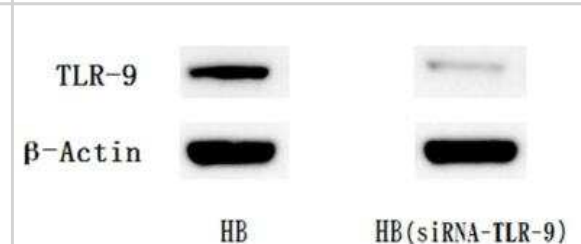
Immunohistochemistry: TLR Screening Antibody Pack [NBP2-25083] - The expression of TLR-7 in the hippocampal brain region. The immunofluorescence of TLR7 recognized by Alexa 488, green. GFAP recognized by Alexa 594, red. NEUN recognized by Alexa 633, (blue) and merged image in the hippocampal region. NeuN and GFAP were applied to show the distribution of TLR7 within neuronal and supportive tissue populations. Scale bar 80 μ m. Image collected and cropped by CiteAb from the following publication ([//doi.org/10.1371/journal.pone.0222818](https://doi.org/10.1371/journal.pone.0222818)) licensed under a CC-BY license. TLR7 Antibody [NBP2-24906]



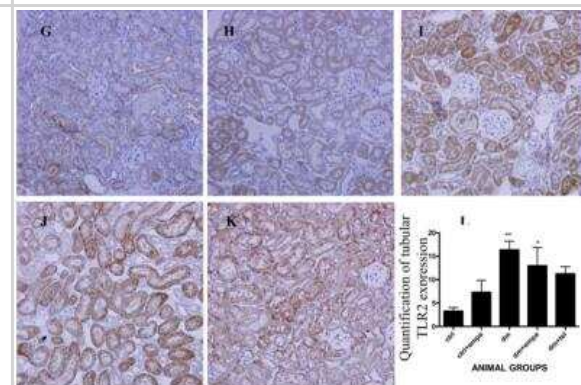
Western Blot: TLR Screening Antibody Pack [NBP2-25083] - Expression analysis of TLR protein in HMCLs by Western blotting. All cell lines displayed a strong expression of TLR1, TLR3, TLR4, TLR7, TLR9 proteins. Cell lysates were electrophoresed and blotted to PVDF membrane, which was probed with TLR-specific antibodies. To confirm the immunoreactivity of the antibodies, different positive controls were included. Beta-actin was served as loading control and was used to normalize expression levels between cells. Data are representative for analysis of ≥ 2 independent experiments. Image collected and cropped by CiteAb from the following publication ([//doi.org/10.1371/journal.pone.0060671](https://doi.org/10.1371/journal.pone.0060671)) licensed under a CC-BY license. TLR1 Antibody [NB100-56563], TLR3 Antibody [NBP2-24875], TLR7 Antibody [NBP2-24906], TLR9 Antibody [NBP2-24729]



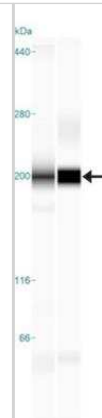
Western Blot: TLR Screening Antibody Pack [NBP2-25083] - Expression of TLR-9 protein in HB cells before and after 48 hr of transfection. Beta-actin was used as an internal control. Image collected and cropped by CiteAb from the following publication ([//doi.org/10.1371/journal.pone.0092748](https://doi.org/10.1371/journal.pone.0092748)) licensed under a CC-BY license. TLR9 Antibody (26C593.2) [NBP2-24729]



Immunohistochemistry: TLR Screening Antibody Pack [NBP2-25083] - Representative photographs of immunohistochemistry for tubular TLR2 in G) ctrl, H) ctrl + empa, I) diabetic (dm), J) dm + empagliflozin, K) dm + telmisartan groups (Magnification = original X 200) and quantification of tubular TLR2 expression by Image J (L). (Data are expressed as mean \pm SEM with $*=P<0.05$ vs ctrl, $**=P<0.001$ vs ctrl and $\#=P<0.05$ vs dm). Image collected and cropped by CiteAb from the following publication ([//doi.org/10.1371/journal.pone.0108994](https://doi.org/10.1371/journal.pone.0108994)) licensed under a CC-BY license. TLR2 Antibody [NB100-56720]



Simple Western: TLR Screening Antibody Pack [NBP2-25083] - Simple Western lane view shows a specific band for TLR8 in 0.5 mg/ml of Ramos (left) and Human Spleen (right) lysate. This experiment was performed under reducing conditions using the 12-230 kDa separation system. * Non-specific interaction with the 230 kDa Simple Western standard may be seen with this antibody. TLR8 Antibody (44C143) [NBP2-24917]





Novus Biologicals USA

10730 E. Briarwood Avenue
Centennial, CO 80112
USA
Phone: 303.730.1950
Toll Free: 1.888.506.6887
Fax: 303.730.1966
nb-customerservice@bio-techne.com

Bio-Techne Canada

21 Canmotor Ave
Toronto, ON M8Z 4E6
Canada
Phone: 905.827.6400
Toll Free: 855.668.8722
Fax: 905.827.6402
canada.inquires@bio-techne.com

Bio-Techne Ltd

19 Barton Lane
Abingdon Science Park
Abingdon, OX14 3NB, United Kingdom
Phone: (44) (0) 1235 529449
Free Phone: 0800 37 34 15
Fax: (44) (0) 1235 533420
info.EMEA@bio-techne.com

General Contact Information

www.novusbio.com
Technical Support: nb-technical@bio-techne.com
Orders: nb-customerservice@bio-techne.com
General: novus@novusbio.com

Limitations

This product is for research use only and is not approved for use in humans or in clinical diagnosis. Antibody Packs are guaranteed for 1 year from date of receipt.

For more information on our 100% guarantee, please visit www.novusbio.com/guarantee

Earn gift cards/discounts by submitting a review: www.novusbio.com/reviews/submit/NBP2-25083

Earn gift cards/discounts by submitting a publication using this product:
www.novusbio.com/publications

