

Product Datasheet

KLF4 Antibody NBP2-24749

Unit Size: 0.1 mg

Store at -20C. Avoid freeze-thaw cycles.

www.novusbio.com



technical@novusbio.com

Reviews: 2 Publications: 25

Protocols, Publications, Related Products, Reviews, Research Tools and Images at:
www.novusbio.com/NBP2-24749

Updated 8/21/2023 v.20.1

**Earn rewards for product
reviews and publications.**

Submit a publication at www.novusbio.com/publications

Submit a review at www.novusbio.com/reviews/destination/NBP2-24749



NBP2-24749

KLF4 Antibody

Product Information	
Unit Size	0.1 mg
Concentration	1.0 mg/ml
Storage	Store at -20C. Avoid freeze-thaw cycles.
Clonality	Polyclonal
Preservative	0.05% Sodium Azide
Isotype	IgG
Purity	Protein G purified
Buffer	PBS

Product Description	
Host	Rabbit
Gene ID	9314
Gene Symbol	KLF4
Species	Human, Mouse, Rat, Primate
Reactivity Notes	The amino acid sequence used as immunogen for the antibody is 100% homologous in human and chimpanzee. Mouse reactivity reported in scientific publication.
Immunogen	A portion of amino acids 1-50 of human KLF4 was used as the immunogen for this antibody.

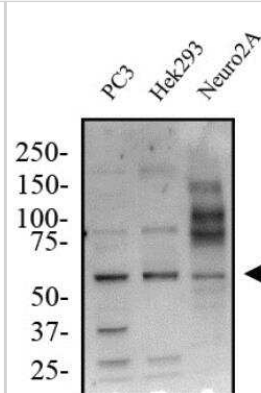
Product Application Details	
Applications	Western Blot, Flow Cytometry, Immunocytochemistry/Immunofluorescence, Immunohistochemistry, Immunohistochemistry-Paraffin
Recommended Dilutions	Western Blot 1-3 ug/ml, Flow Cytometry 1 ug/10 ⁶ cells, Immunohistochemistry reported in scientific literature (PMID 34428252; 30901290), Immunocytochemistry/Immunofluorescence 1:10-1:500. Use reported in scientific literature (PMID 34428252), Immunohistochemistry-Paraffin 10 ug/ml

Images

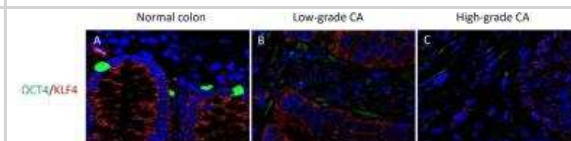
Immunohistochemistry: KLF4 Antibody [NBP2-24749] - DAB IHC staining. Representative 3,3-diaminobenzidine immunohistochemical-stained images showing protein expression of induced-pluripotent stem cell marker KLF4 (J-L, brown) in normal colon (J), low-grade (K) and high-grade (L) colon adenocarcinoma tissue samples. Nuclei were counter-stained with hematoxylin (A-O, blue). Original magnification: 400x. Image collected and cropped by CiteAb from the following publication ([//doi.org/10.1371/journal.pone.0221963](https://doi.org/10.1371/journal.pone.0221963)) licensed under a CC-BY license.



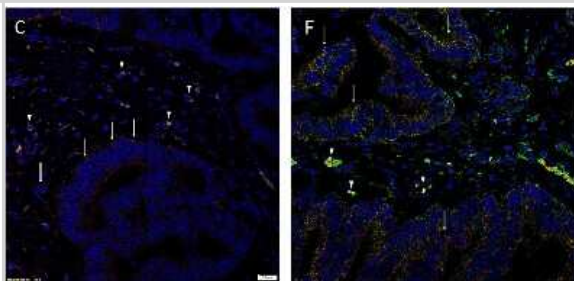
Western Blot: KLF4 Antibody [NBP2-24749] - Total protein from Human PC3, Hek293 and Mouse Neuro2A cells was separated on a 7.5% gel by SDS-PAGE, transferred to PVDF membrane and blocked in 5% non-fat milk in TBST. The membrane was probed with 2.0 ug/ml anti-KLF4 in 1% non-fat milk in TBST and detected with an anti-rabbit HRP secondary antibody using chemiluminescence.



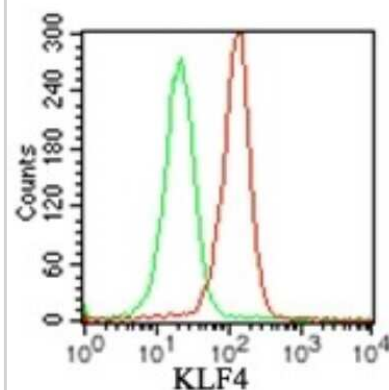
Immunohistochemistry: KLF4 Antibody [NBP2-24749] - IF IHC staining. Representative immunofluorescence immunohistochemical-stained images showing protein expression of induced-pluripotent stem cell markers OCT4 (A-C, green), KLF4 (A-C, red) in normal colon (A), low-grade (B) and high-grade (C) colon adenocarcinoma tissue samples. Cell nuclei were counter-stained with 4', 6'-diamidino-2-phenylindole (A-C, blue). Original magnification: 400x. Image collected and cropped by CiteAb from the following publication ([//doi.org/10.1371/journal.pone.0221963](https://doi.org/10.1371/journal.pone.0221963)) licensed under a CC-BY license.



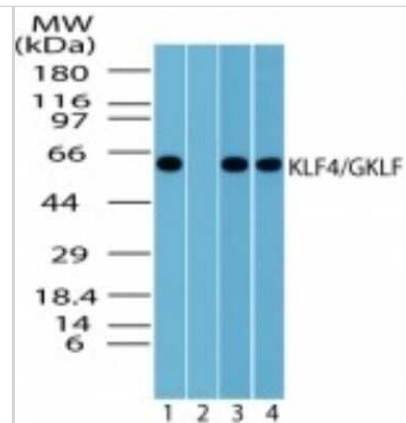
Immunohistochemistry-Paraffin: KLF4 Antibody [NBP2-24749] - Representative immunofluorescence immunohistochemical-stained sections of colon adenocarcinoma metastasis to the liver showing the expression of KLF4 [red] on the cells within the tumor nests (TNs) [thin arrows] and those within the peritumoral stroma [arrowheads]. OCT4 [green] was expressed on the KLF4+ [green, arrowheads] cells within the peritumoral stroma, and also cells within the peritumoral stroma that expressed KLF4 [red, thick arrows] not expressing OCT4. c-Myc was expressed by cells within the TNs [green, arrows] and those within the peritumoral stroma [arrowheads]. The c-Myc+ population within the peritumoral stroma also expressed KLF4 [red]. Cell nuclei were counterstained with DAPI [blue]. Scale bars: 20 um. Image collected and cropped by CiteAb from the following publication (<http://journal.frontiersin.org/article/10.3389/fsurg.2017.00076/full>), licensed under a CC-BY license.



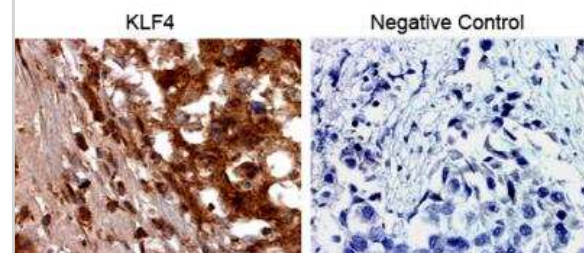
Flow Cytometry: KLF4 Antibody [NBP2-24749] - Intracellular analysis using KLF4 antibody. Balb/c mouse splenocytes were probed using 1 ug of KLF4 antibody (red) and 1 ug of isotype control was used for this test, and an anti-rabbit IgG PE conjugated secondary .



Western Blot: KLF4 Antibody [NBP2-24749] - Lysate from human 293 cells in the (1) absence and (2) presence of immunizing peptide, (3) mouse NIH 3T3, and (4) RAW cells probed with KLF4 antibody at 1 ug/ml (293) and 2 ug/ml (NIH 3T3 and RAW). Goat anti-rabbit IgG HRP secondary and PicoTect ECL substrate solution were used for this test.



Immunohistochemistry-Paraffin: KLF4 Antibody [NBP2-24749] - Breast cancer tissues embedded in paraffin. Negative control is no primary antibody. IHC-P image submitted by a verified customer review.



Publications

Kilmister EJ, Patel J, van Schaijk B et al. Cancer Stem Cell Subpopulations Are Present Within Metastatic Head and Neck Cutaneous Squamous Cell Carcinoma *Frontiers in Oncology* 2020-07-30 [PMID: 32850316] (IHC, ICC/IF)

Luke Krishnan CS, Brasch HD, Patel J et al. Stemness-Associated Markers Are Expressed in Extracranial Arteriovenous Malformation *Frontiers in Surgery* 2021-03-19 [PMID: 33816543]

Yamamoto H, Uchida Y, Chiba T et al. Transcriptome analysis of sevoflurane exposure effects at the different brain regions *PLOS ONE* 2020-12-15 [PMID: 33320849] (IHC, B/N, WB)

Imai T, Van TM, Pasparakis M, Polykratis A Smooth muscle cell specific NEMO deficiency inhibits atherosclerosis in ApoE^{-/-} mice *Scientific reports* 2022-07-22 [PMID: 35869246] (WB, Mouse)

Paterson C, Kilmister EJ, Brasch HD Et al. Cell Populations Expressing Stemness-Associated Markers in Lung Adenocarcinoma *Life (Basel, Switzerland)* 2021-10-18 [PMID: 34685477] (IHC-P, Human)

Munro MJ, Peng L, Wickremesekera SK, Tan ST Colon adenocarcinoma-derived cells possessing stem cell function can be modulated using renin-angiotensin system inhibitors *PloS one* 2021-08-24 [PMID: 34428252] (ICC/IF, IF/IHC)

Williams J, Brasch H, Bockett N et al. Embryonic Stem Cell-like Population in Hypertrophic Port-wine Stain *Journal of Vascular Anomalies* 2021-02-11 (WB, IHC-P, Human)

Yoganandarajah V, Patel J et al. Identification of Cancer Stem Cell Subpopulations in Head and Neck Metastatic Malignant Melanoma. *Cells* 2020-01-30 [PMID: 32019273] (WB, IF/IHC, Human)

Kilmister E, Patel J, Bockett N et al. Embryonic stem cell-like subpopulations are present within Schwannoma *Journal of Clinical Neuroscience* 2020-11-01 [PMID: 33222917] (IF/IHC, Human)

Munro MJ, Peng L, Wickremesekera SK, Tan ST Colon adenocarcinoma-derived cells that express induced-pluripotent stem cell markers possess stem cell function *PLoS ONE* 2020-05-19 [PMID: 32428045] (WB, Human)

Zhou J, Liu S, Wang Y et al. Salinomycin effectively eliminates cancer stem-like cells and obviates hepatic metastasis in uveal melanoma *Mol. Cancer* 2019-11-13 [PMID: 31718679] (WB, Human)

Munro MJ, Wickremesekera SK, Peng L et al. Cancer stem cell subpopulations in primary colon adenocarcinoma *PLoS ONE* 2019-09-06 [PMID: 31491003] (IF/IHC, ISH, IHC-P, Human)

More publications at <http://www.novusbio.com/NBP2-24749>





Novus Biologicals USA

10730 E. Briarwood Avenue
Centennial, CO 80112
USA
Phone: 303.730.1950
Toll Free: 1.888.506.6887
Fax: 303.730.1966
nb-customerservice@bio-techne.com

Bio-Techne Canada

21 Canmotor Ave
Toronto, ON M8Z 4E6
Canada
Phone: 905.827.6400
Toll Free: 855.668.8722
Fax: 905.827.6402
canada.inquires@bio-techne.com

Bio-Techne Ltd

19 Barton Lane
Abingdon Science Park
Abingdon, OX14 3NB, United Kingdom
Phone: (44) (0) 1235 529449
Free Phone: 0800 37 34 15
Fax: (44) (0) 1235 533420
info.EMEA@bio-techne.com

General Contact Information

www.novusbio.com
Technical Support: nb-technical@bio-techne.com
Orders: nb-customerservice@bio-techne.com
General: novus@novusbio.com

Products Related to NBP2-24749

HAF008	Goat anti-Rabbit IgG Secondary Antibody [HRP]
NB7160	Goat anti-Rabbit IgG (H+L) Secondary Antibody [HRP]
NBP2-24891	Rabbit IgG Isotype Control
NBP2-52014-0.1mg	Recombinant Human KLF4 His Protein

Limitations

This product is for research use only and is not approved for use in humans or in clinical diagnosis. Primary Antibodies are guaranteed for 1 year from date of receipt.

For more information on our 100% guarantee, please visit www.novusbio.com/guarantee

Earn gift cards/discounts by submitting a review: www.novusbio.com/reviews/submit/NBP2-24749

Earn gift cards/discounts by submitting a publication using this product:
www.novusbio.com/publications

