

Product Datasheet

ATG16L1 Antibody NBP2-24730

Unit Size: 0.1 mg

Store at 4C short term. Aliquot and store at -20C long term. Avoid freeze-thaw cycles.

www.novusbio.com



technical@novusbio.com

Protocols, Publications, Related Products, Reviews, Research Tools and Images at:
www.novusbio.com/NBP2-24730

Updated 11/21/2020 v.20.1

Earn rewards for product
reviews and publications.

Submit a publication at www.novusbio.com/publications

Submit a review at www.novusbio.com/reviews/destination/NBP2-24730



NBP2-24730**ATG16L1 Antibody**

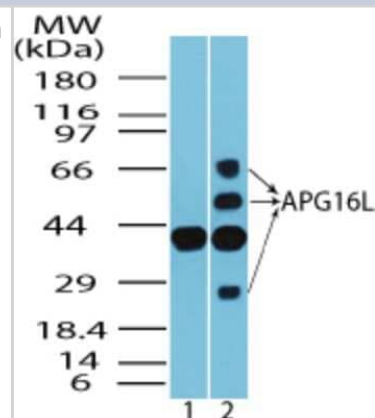
Product Information	
Unit Size	0.1 mg
Concentration	0.5 mg/ml
Storage	Store at 4C short term. Aliquot and store at -20C long term. Avoid freeze-thaw cycles.
Clonality	Polyclonal
Preservative	0.05% Sodium Azide
Isotype	IgG
Purity	Protein G purified
Buffer	0.2 ml PBS and 0.05% BSA

Product Description	
Host	Rabbit
Gene ID	55054
Gene Symbol	ATG16L1
Species	Human, Mouse, Primate
Reactivity Notes	The amino acid sequence used as immunogen is 100% homologous in human, chimpanzee and monkey, 95% homologous in dog, horse and mouse, 91% homologous in cow and rat.
Immunogen	A portion of amino acids 25-75 of human APG16L was used as the immunogen.

Product Application Details	
Applications	Western Blot
Recommended Dilutions	Western Blot 1.0-3.0 ug/ml

Images

Western Blot: ATG16L1 Antibody [NBP2-24730] - Analysis of APG16L in human skeletal muscle lysate in the 1) presence and 2) absence of immunizing peptide using this antibody at 2.0 ug/ml.





Novus Biologicals USA

10730 E. Briarwood Avenue
Centennial, CO 80112
USA
Phone: 303.730.1950
Toll Free: 1.888.506.6887
Fax: 303.730.1966
novus@novusbio.com

Bio-Techne Canada

21 Canmotor Ave
Toronto, ON M8Z 4E6
Canada
Phone: 905.827.6400
Toll Free: 855.668.8722
Fax: 905.827.6402
canada.inquires@bio-techne.com

Bio-Techne Ltd

19 Barton Lane
Abingdon Science Park
Abingdon, OX14 3NB, United Kingdom
Phone: (44) (0) 1235 529449
Free Phone: 0800 37 34 15
Fax: (44) (0) 1235 533420
info.EMEA@bio-techne.com

General Contact Information

www.novusbio.com
Technical Support: technical@novusbio.com
Orders: orders@novusbio.com
General: novus@novusbio.com

Limitations

This product is for research use only and is not approved for use in humans or in clinical diagnosis. Primary Antibodies are guaranteed for 1 year from date of receipt.

For more information on our 100% guarantee, please visit www.novusbio.com/guarantee

Earn gift cards/discounts by submitting a review: www.novusbio.com/reviews/submit/NBP2-24730

Earn gift cards/discounts by submitting a publication using this product:
www.novusbio.com/publications

