

Product Datasheet

CCL2/MCP1 Antibody (2D8) [Allophycocyanin] NBP2-22115APC

Unit Size: 0.1 ml

Store at 4C in the dark.

www.novusbio.com



technical@novusbio.com

Reviews: 1

Protocols, Publications, Related Products, Reviews, Research Tools and Images at:
www.novusbio.com/NBP2-22115APC

Updated 10/23/2024 v.20.1

Earn rewards for product
reviews and publications.

Submit a publication at www.novusbio.com/publications

Submit a review at www.novusbio.com/reviews/destination/NBP2-22115APC



NBP2-22115APC

CCL2/MCP1 Antibody (2D8) [Allophycocyanin]

Product Information

Unit Size	0.1 ml
Concentration	Please see the vial label for concentration. If unlisted please contact technical services.
Storage	Store at 4C in the dark.
Clonality	Monoclonal
Clone	2D8
Preservative	0.05% Sodium Azide
Isotype	IgG1
Conjugate	Allophycocyanin
Purity	Ammonium sulfate precipitation
Buffer	PBS

Product Description

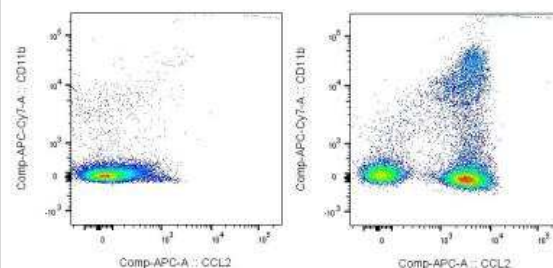
Host	Mouse
Gene ID	6347
Gene Symbol	CCL2
Species	Human, Mouse, Rat, Feline, Primate
Reactivity Notes	Rat reactivity reported in scientific literature (PMID: 29286133).
Immunogen	Purified recombinant fragment of human MCP1 expressed in E. coli. [Uniprot: P13500]

Product Application Details

Applications	Western Blot, ELISA, Flow Cytometry, Immunocytochemistry/ Immunofluorescence, Immunohistochemistry, Immunohistochemistry-Paraffin
Recommended Dilutions	Western Blot, Flow Cytometry, ELISA, Immunohistochemistry, Immunocytochemistry/ Immunofluorescence, Immunohistochemistry-Paraffin
Application Notes	Optimal dilution of this antibody should be experimentally determined.

Images

Flow Cytometry: CCL2/MCP1 Antibody (2D8) [Allophycocyanin] [NBP2-22115APC] - Viable CNS mononuclear cells isolated at onset (left) and peak (right) of EAE and stained for CD11b and CCL2. Experimental autoimmune encephalomyelitis was induced in C57BL6/J mice, and mononuclear cells were isolated from the CNS at day 10 (onset of symptoms) and at day 15 (peak of disease). Cells were stained for CCL2, GFAP, Neun, CX3CL1, CXCL12, CD45 and CD11b, plus for viability to exclude dead cells. CCL2 staining is shown for viable cells (either CD11b+ or CD11b-) in samples isolated on day 10 (left) and 15 (right). Image from verified customer review.





Novus Biologicals USA

10730 E. Briarwood Avenue
Centennial, CO 80112
USA
Phone: 303.730.1950
Toll Free: 1.888.506.6887
Fax: 303.730.1966
nb-customerservice@bio-techne.com

Bio-Techne Canada

21 Canmotor Ave
Toronto, ON M8Z 4E6
Canada
Phone: 905.827.6400
Toll Free: 855.668.8722
Fax: 905.827.6402
canada.inquires@bio-techne.com

Bio-Techne Ltd

19 Barton Lane
Abingdon Science Park
Abingdon, OX14 3NB, United Kingdom
Phone: (44) (0) 1235 529449
Free Phone: 0800 37 34 15
Fax: (44) (0) 1235 533420
info.EMEA@bio-techne.com

General Contact Information

www.novusbio.com
Technical Support: nb-technical@bio-techne.com
Orders: nb-customerservice@bio-techne.com
General: novus@novusbio.com

Products Related to NBP2-22115APC

NBP1-97005APC	Mouse IgG1 Isotype Control (MG1) [Allophycocyanin]
NBP2-34957-5ug	Recombinant Human CCL2/MCP1 Protein
210-TA-005	TNF-alpha [Unconjugated]
NBP1-07034PEP	CCL2/MCP1 Antibody Blocking Peptide

Limitations

This product is for research use only and is not approved for use in humans or in clinical diagnosis. Primary Antibodies are guaranteed for 1 year from date of receipt.

For more information on our 100% guarantee, please visit www.novusbio.com/guarantee

Earn gift cards/discounts by submitting a review: www.novusbio.com/reviews/submit/NBP2-22115APC

Earn gift cards/discounts by submitting a publication using this product:
www.novusbio.com/publications

