

# Product Datasheet

## Dectin-1/CLEC7A Antibody (BD6) [Alexa Fluor® 647] NBP1-21513AF647

Unit Size: 0.1 ml

Store at 4C in the dark.

[www.novusbio.com](http://www.novusbio.com)



[technical@novusbio.com](mailto:technical@novusbio.com)

Protocols, Publications, Related Products, Reviews, Research Tools and Images at:  
[www.novusbio.com/NBP1-21513AF647](http://www.novusbio.com/NBP1-21513AF647)

Updated 10/23/2024 v.20.1

Earn rewards for product  
reviews and publications.

Submit a publication at [www.novusbio.com/publications](http://www.novusbio.com/publications)

Submit a review at [www.novusbio.com/reviews/destination/NBP1-21513AF647](http://www.novusbio.com/reviews/destination/NBP1-21513AF647)



**NBP1-21513AF647**

Dectin-1/CLEC7A Antibody (BD6) [Alexa Fluor® 647]

Product Information	
Unit Size	0.1 ml
Concentration	Please see the vial label for concentration. If unlisted please contact technical services.
Storage	Store at 4C in the dark.
Clonality	Monoclonal
Clone	BD6
Preservative	0.05% Sodium Azide
Isotype	IgG2b
Conjugate	Alexa Fluor 647
Purity	Protein G purified
Buffer	50mM Sodium Borate
Product Description	
Host	Mouse
Gene ID	64581
Gene Symbol	CLEC7A
Species	Human
Reactivity Notes	Reacts with Human.
Specificity/Sensitivity	NBP1-21513 recognizes human Dectin-1, also known as beta-glucan receptor (betaGR), a C-type lectin domain family member. It is a major pathogen pattern-recognition receptor that binds beta-glucans, glucose polymers that form cell-wall components or exopolymers of yeasts, fungi and some bacteria. Beta-glucans have also been used experimentally and therapeutically as immunomodulators that enhance resistance to bacterial, yeast, viral and protozoan infections, as well as tumor formation. Dectin-1 also acts as a co-stimulatory molecule on T-cells to induce their proliferation and is necessary for the TLR2-mediated inflammatory response. It is highly expressed on peripheral blood leukocytes and dendritic cells. Human Dectin-1 has two major (betaGR-A and betaGR-B) and several minor isoforms. betaGR-A and betaGR-B differs by the presence and absence, respectively, of a stalk region. Clone BD6 recognizes betaGR-A only.
Immunogen	NIH3T3 cells expressing full length Beta-glucan receptor



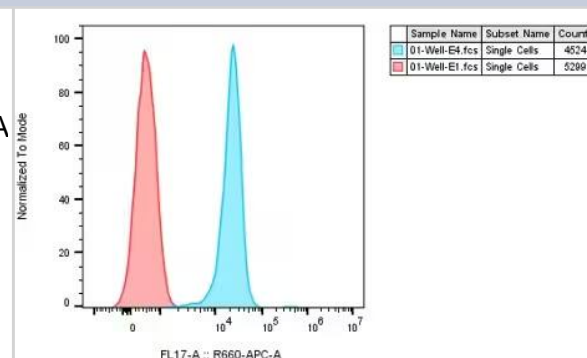
<b>Notes</b>	<p>Alexa Fluor (R) products are provided under an intellectual property license from Life Technologies Corporation. The purchase of this product conveys to the buyer the non-transferable right to use the purchased product and components of the product only in research conducted by the buyer (whether the buyer is an academic or for-profit entity). The sale of this product is expressly conditioned on the buyer not using the product or its components, or any materials made using the product or its components, in any activity to generate revenue, which may include, but is not limited to use of the product or its components: (i) in manufacturing; (ii) to provide a service, information, or data in return for payment; (iii) for therapeutic, diagnostic or prophylactic purposes; or (iv) for resale, regardless of whether they are resold for use in research. For information on purchasing a license to this product for purposes other than as described above, contact Life Technologies Corporation, 5791 Van Allen Way, Carlsbad, CA 92008 USA or <a href="mailto:outlicensing@lifetech.com">outlicensing@lifetech.com</a>. This conjugate is made on demand. Actual recovery may vary from the stated volume of this product. The volume will be greater than or equal to the unit size stated on the datasheet.</p>
--------------	--

## Product Application Details

<b>Applications</b>	Flow Cytometry
<b>Recommended Dilutions</b>	Flow Cytometry

## Images

Flow Cytometry: Mouse Monoclonal Dectin-1/CLEC7A Antibody (BD6) [Alexa Fluor® 647] [NBP1-21513AF647] - Detection of human Dectin1/CLEC7A on HEK cells expressing isoform A of human Dectin1/CLEC7A. The cells received 5 uL of the human Dectin1/CLEC7A AF647-conjugated antibody (BLUE) or mouse IgG2b AF647-conjugated isotype control (RED). Image from a verified customer review.





### **Novus Biologicals USA**

10730 E. Briarwood Avenue  
Centennial, CO 80112  
USA  
Phone: 303.730.1950  
Toll Free: 1.888.506.6887  
Fax: 303.730.1966  
nb-customerservice@bio-techne.com

### **Bio-Techne Canada**

21 Canmotor Ave  
Toronto, ON M8Z 4E6  
Canada  
Phone: 905.827.6400  
Toll Free: 855.668.8722  
Fax: 905.827.6402  
canada.inquires@bio-techne.com

### **Bio-Techne Ltd**

19 Barton Lane  
Abingdon Science Park  
Abingdon, OX14 3NB, United Kingdom  
Phone: (44) (0) 1235 529449  
Free Phone: 0800 37 34 15  
Fax: (44) (0) 1235 533420  
info.EMEA@bio-techne.com

### **General Contact Information**

www.novusbio.com  
Technical Support: nb-technical@bio-techne.com  
Orders: nb-customerservice@bio-techne.com  
General: novus@novusbio.com

### **Products Related to NBP1-21513AF647**

---

NBP2-27228	Mouse IgG2b Isotype Control (MPC-11) [Alexa Fluor® 647]
NBP1-21513AF700	Dectin-1/CLEC7A Antibody (BD6) [Alexa Fluor® 700]
NBP2-55630PEP	Dectin-1/CLEC7A Recombinant Protein Antigen
210-TA-005	TNF-alpha [Unconjugated]

---

### **Limitations**

This product is for research use only and is not approved for use in humans or in clinical diagnosis. Primary Antibodies are guaranteed for 1 year from date of receipt.

For more information on our 100% guarantee, please visit [www.novusbio.com/guarantee](http://www.novusbio.com/guarantee)

Earn gift cards/discounts by submitting a review: [www.novusbio.com/reviews/submit/NBP1-21513AF647](http://www.novusbio.com/reviews/submit/NBP1-21513AF647)

Earn gift cards/discounts by submitting a publication using this product:  
[www.novusbio.com/publications](http://www.novusbio.com/publications)

