

# Product Datasheet

## alpha Tubulin Antibody (YL1/2) [DyLight 488] NB600-506G

Unit Size: 0.1 ml

Store at 4C in the dark.

[www.novusbio.com](http://www.novusbio.com)



[technical@novusbio.com](mailto:technical@novusbio.com)

### Publications: 2

Protocols, Publications, Related Products, Reviews, Research Tools and Images at:  
[www.novusbio.com/NB600-506G](http://www.novusbio.com/NB600-506G)

Updated 11/11/2025 v.20.1

Earn rewards for product  
reviews and publications.

Submit a publication at [www.novusbio.com/publications](http://www.novusbio.com/publications)

Submit a review at [www.novusbio.com/reviews/destination/NB600-506G](http://www.novusbio.com/reviews/destination/NB600-506G)



**NB600-506G**

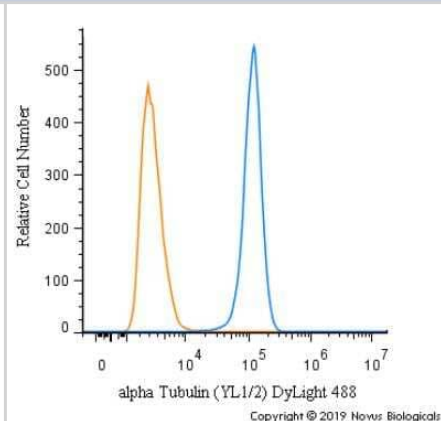
alpha Tubulin Antibody (YL1/2) [DyLight 488]

Product Information	
Unit Size	0.1 ml
Concentration	Please see the vial label for concentration. If unlisted please contact technical services.
Storage	Store at 4C in the dark.
Clonality	Monoclonal
Clone	YL1/2
Preservative	0.05% Sodium Azide
Isotype	IgG2a
Conjugate	DyLight 488
Purity	Protein G purified
Buffer	50mM Sodium Borate
Product Description	
Host	Rat
Gene ID	7846
Gene Symbol	TUBA1A
Species	Human, Mouse, Rat, Avian, C. elegans, Drosophila, Invertebrate, Mammal, Primate, Monkey, Yeast
Reactivity Notes	S. cerevisiae, S. pombe, Slime molds, Allium. Other species have not been tested. Expected to react with most eukaryotes due to sequence identity. Drosophila reactivity reported in scientific literature (PMID: 24019759). C. elegans reactivity reported in scientific literature (PMID: 29118344). Toxoplasma gondii reactivity reported by customer review.
Marker	Microtubule Marker
Immunogen	This alpha Tubulin Antibody (YL1/2) was developed against full length native protein (purified) (S. cerevisiae).
Notes	DyLight (R) is a trademark of Thermo Fisher Scientific Inc. and its subsidiaries.
Product Application Details	
Applications	Western Blot, Immunohistochemistry-Paraffin, ELISA, Flow Cytometry, Functional, Immunocytochemistry/ Immunofluorescence, Immunohistochemistry, Immunohistochemistry-Frozen, Immunoprecipitation, Radioimmunoassay
Recommended Dilutions	Western Blot, Flow Cytometry, ELISA, Immunohistochemistry, Immunocytochemistry/ Immunofluorescence, Immunoprecipitation, Immunohistochemistry-Paraffin, Immunohistochemistry-Frozen, Functional, Radioimmunoassay
Application Notes	Optimal dilution of this antibody should be experimentally determined.

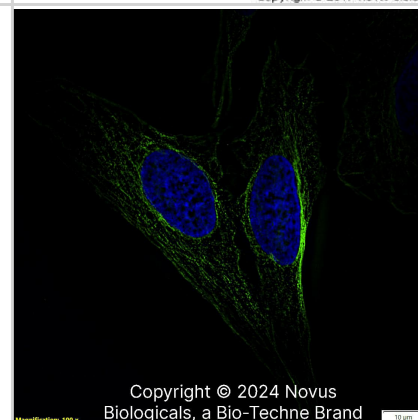


## Images

Flow Cytometry: alpha Tubulin Antibody (YL1/2) [DyLight 488] [NB600-506G] - An intracellular stain was performed on SH-SY5Y cells with alpha Tubulin (YL1/2) Antibody NB600-506G (blue) and a matched isotype control (orange). Cells were fixed with 4% PFA and then permeabilized with 0.1% saponin. Cells were incubated in an antibody dilution of 5 ug/mL for 30 minutes at room temperature. Both antibodies were conjugated to DyLight 488.



Alpha Tubulin (YL1/2) was detected in immersion fixed U-2 OS human osteosarcoma cell line using Rat anti-Alpha Tubulin (YL1/2) Protein G Purified Monoclonal Antibody conjugated to DyLight 488 (Catalog # NB600-506G) (green) at 5 µg/mL overnight at 4C. Cells were counterstained with DAPI (dark blue). Cells were imaged using a 100X objective and digitally deconvolved.



## Publications

Courtney A, Alvey LM, Mercus GOT et al. The Flexiscope: a low cost, flexible, convertible and modular microscope with automated scanning and micromanipulation R Soc Open Sci 2020-03-01 [PMID: 32269809]

Courtney A, Liegey J, Burke N Et al. Characterization of geometric variance in the epithelial nerve net of the ctenophore Pleurobrachia pileus J Comp Neurol 2021-12-21 [PMID: 34933399]

Details:

Citation using the DyLight 488 version of this antibody.



### **Novus Biologicals USA**

10730 E. Briarwood Avenue  
Centennial, CO 80112  
USA  
Phone: 303.730.1950  
Toll Free: 1.888.506.6887  
Fax: 303.730.1966  
nb-customerservice@bio-techne.com

### **Bio-Techne Canada**

21 Canmotor Ave  
Toronto, ON M8Z 4E6  
Canada  
Phone: 905.827.6400  
Toll Free: 855.668.8722  
Fax: 905.827.6402  
canada.inquires@bio-techne.com

### **Bio-Techne Ltd**

19 Barton Lane  
Abingdon Science Park  
Abingdon, OX14 3NB, United Kingdom  
Phone: (44) (0) 1235 529449  
Free Phone: 0800 37 34 15  
Fax: (44) (0) 1235 533420  
info.EMEA@bio-techne.com

### **General Contact Information**

www.novusbio.com  
Technical Support: nb-technical@bio-techne.com  
Orders: nb-customerservice@bio-techne.com  
General: novus@novusbio.com

### **Products Related to NB600-506G**

---

NB600-506F	alpha Tubulin Antibody (YL1/2) [FITC]
H00007846-Q01-10ug	Recombinant Human alpha Tubulin GST (N-Term) Protein
DPLG70	PLA2G7/PAF-AH/Lp-PLA2 [HRP]
NBL1-17427	alpha Tubulin Overexpression Lysate

---

### **Limitations**

This product is for research use only and is not approved for use in humans or in clinical diagnosis. Primary Antibodies are guaranteed for 1 year from date of receipt.

For more information on our 100% guarantee, please visit [www.novusbio.com/guarantee](http://www.novusbio.com/guarantee)

Earn gift cards/discounts by submitting a review: [www.novusbio.com/reviews/submit/NB600-506G](http://www.novusbio.com/reviews/submit/NB600-506G)

Earn gift cards/discounts by submitting a publication using this product:  
[www.novusbio.com/publications](http://www.novusbio.com/publications)

