

Product Datasheet

HLA Class I Antibody (MEM-123) [Alexa Fluor® 647] NB500-505AF647

Unit Size: 0.1 ml

Store at 4C in the dark.

www.novusbio.com



technical@novusbio.com

Protocols, Publications, Related Products, Reviews, Research Tools and Images at:
www.novusbio.com/NB500-505AF647

Updated 10/23/2024 v.20.1

Earn rewards for product
reviews and publications.

Submit a publication at www.novusbio.com/publications

Submit a review at www.novusbio.com/reviews/destination/NB500-505AF647



NB500-505AF647

HLA Class I Antibody (MEM-123) [Alexa Fluor® 647]

| Product Information | |
|---------------------|---|
| Unit Size | 0.1 ml |
| Concentration | Please see the vial label for concentration. If unlisted please contact technical services. |
| Storage | Store at 4C in the dark. |
| Clonality | Monoclonal |
| Clone | MEM-123 |
| Preservative | 0.05% Sodium Azide |
| Isotype | IgG3 |
| Conjugate | Alexa Fluor 647 |
| Purity | Protein A purified |
| Buffer | 50mM Sodium Borate |

| Product Description | |
|-------------------------|--|
| Host | Mouse |
| Gene ID | 3105 |
| Gene Symbol | HLA-A |
| Species | Human, Bovine, Primate |
| Specificity/Sensitivity | This antibody (clone MEM-123) reacts with all human classical MHC Class I molecules (major histocompatibility complex) in native cell-surface forms as well as with human HLA-G cDNA transfected cells. MHC Class I molecules (MHC Class Ia) are expressed on the surface of all human cell types. This antibody completely blocks binding of classical W6/32 to surface-expressed HLA-G, but does not cross-blocks This antibody MEM-G/9. |
| Immunogen | COS-7 African green monkey kidney cells |
| Notes | <p>Alexa Fluor (R) products are provided under an intellectual property license from Life Technologies Corporation. The purchase of this product conveys to the buyer the non-transferable right to use the purchased product and components of the product only in research conducted by the buyer (whether the buyer is an academic or for-profit entity). The sale of this product is expressly conditioned on the buyer not using the product or its components, or any materials made using the product or its components, in any activity to generate revenue, which may include, but is not limited to use of the product or its components: (i) in manufacturing; (ii) to provide a service, information, or data in return for payment; (iii) for therapeutic, diagnostic or prophylactic purposes; or (iv) for resale, regardless of whether they are resold for use in research. For information on purchasing a license to this product for purposes other than as described above, contact Life Technologies Corporation, 5791 Van Allen Way, Carlsbad, CA 92008 USA or outlicensing@lifetech.com. This conjugate is made on demand. Actual recovery may vary from the stated volume of this product. The volume will be greater than or equal to the unit size stated on the datasheet.</p> |

| Product Application Details | |
|-----------------------------|---|
| Applications | ELISA, Flow Cytometry, Immunoprecipitation, CyTOF-ready |

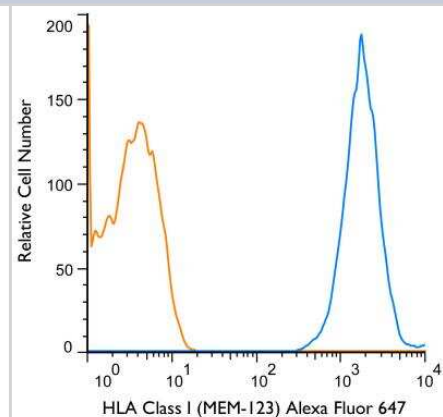


Recommended Dilutions

Flow Cytometry, ELISA, Immunoprecipitation, CyTOF-ready

Images

Flow Cytometry: HLA Class I Antibody (MEM-123) [Alexa Fluor 647] [NB500-505AF647] - A surface stain was performed on human peripheral blood lymphocytes with HLA Class I (MEM-123) antibody NB500-505AF647 (blue) and a matched isotype control (orange). Cells were incubated in an antibody dilution of 1 ug/mL for 20 minutes at room temperature.





Novus Biologicals USA

10730 E. Briarwood Avenue
Centennial, CO 80112
USA
Phone: 303.730.1950
Toll Free: 1.888.506.6887
Fax: 303.730.1966
nb-customerservice@bio-techne.com

Bio-Techne Canada

21 Canmotor Ave
Toronto, ON M8Z 4E6
Canada
Phone: 905.827.6400
Toll Free: 855.668.8722
Fax: 905.827.6402
canada.inquires@bio-techne.com

Bio-Techne Ltd

19 Barton Lane
Abingdon Science Park
Abingdon, OX14 3NB, United Kingdom
Phone: (44) (0) 1235 529449
Free Phone: 0800 37 34 15
Fax: (44) (0) 1235 533420
info.EMEA@bio-techne.com

General Contact Information

www.novusbio.com
Technical Support: nb-technical@bio-techne.com
Orders: nb-customerservice@bio-techne.com
General: novus@novusbio.com

Products Related to NB500-505AF647

| | |
|----------------|--|
| IC007R | Mouse IgG3 Isotype Control (133316) [Alexa Fluor® 647] |
| NB500-505AF700 | HLA Class I Antibody (MEM-123) [Alexa Fluor® 700] |
| 210-TA-005 | TNF-alpha [Unconjugated] |
| 285-IF-100 | IFN-gamma [Unconjugated] |

Limitations

This product is for research use only and is not approved for use in humans or in clinical diagnosis. Primary Antibodies are guaranteed for 1 year from date of receipt.

For more information on our 100% guarantee, please visit www.novusbio.com/guarantee

Earn gift cards/discounts by submitting a review: www.novusbio.com/reviews/submit/NB500-505AF647

Earn gift cards/discounts by submitting a publication using this product:
www.novusbio.com/publications

