

Product Datasheet

LRRK2 Antibody [Alexa Fluor® 647] NB300-268AF647

Unit Size: 0.1 ml

Store at 4C in the dark.

www.novusbio.com



technical@novusbio.com

Reviews: 1 Publications: 1

Protocols, Publications, Related Products, Reviews, Research Tools and Images at:
www.novusbio.com/NB300-268AF647

Updated 10/23/2024 v.20.1

Earn rewards for product
reviews and publications.

Submit a publication at www.novusbio.com/publications

Submit a review at www.novusbio.com/reviews/destination/NB300-268AF647



NB300-268AF647

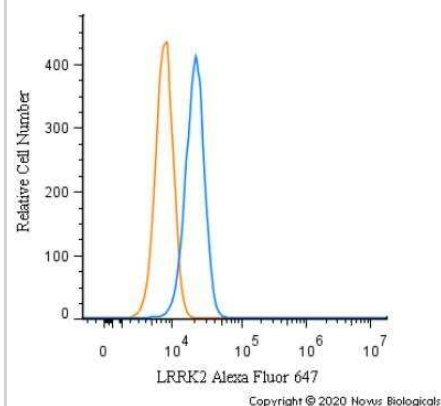
LRRK2 Antibody [Alexa Fluor® 647]

Product Information	
Unit Size	0.1 ml
Concentration	Please see the vial label for concentration. If unlisted please contact technical services.
Storage	Store at 4C in the dark.
Clonality	Polyclonal
Preservative	0.05% Sodium Azide
Isotype	IgG
Conjugate	Alexa Fluor 647
Purity	Immunogen affinity purified
Buffer	50mM Sodium Borate
Product Description	
Host	Rabbit
Gene ID	120892
Gene Symbol	LRRK2
Species	Human, Mouse, Bovine, C. elegans, Insect, Plant
Reactivity Notes	Human, Moth reactivity reported in scientific literature (PMID: 19824698). Plant reactivity reported in scientific literature (PMID: 27273569).
Immunogen	A C-terminal synthetic peptide made to the human LRRK2 protein sequence (between residues 2500-2527). [UniProt# Q5S007]
Notes	Alexa Fluor (R) products are provided under an intellectual property license from Life Technologies Corporation. The purchase of this product conveys to the buyer the non-transferable right to use the purchased product and components of the product only in research conducted by the buyer (whether the buyer is an academic or for-profit entity). The sale of this product is expressly conditioned on the buyer not using the product or its components, or any materials made using the product or its components, in any activity to generate revenue, which may include, but is not limited to use of the product or its components: (i) in manufacturing; (ii) to provide a service, information, or data in return for payment; (iii) for therapeutic, diagnostic or prophylactic purposes; or (iv) for resale, regardless of whether they are resold for use in research. For information on purchasing a license to this product for purposes other than as described above, contact Life Technologies Corporation, 5791 Van Allen Way, Carlsbad, CA 92008 USA or outlicensing@lifetech.com. This conjugate is made on demand. Actual recovery may vary from the stated volume of this product. The volume will be greater than or equal to the unit size stated on the datasheet.
Product Application Details	
Applications	Western Blot, Flow Cytometry, Flow (Intracellular), Immunocytochemistry/Immunofluorescence, Immunohistochemistry, Immunohistochemistry-Frozen, Immunohistochemistry-Paraffin, Immunoprecipitation, Knockout Validated
Recommended Dilutions	Western Blot, Flow Cytometry, Immunohistochemistry, Immunocytochemistry/Immunofluorescence, Immunoprecipitation, Immunohistochemistry-Paraffin, Immunohistochemistry-Frozen, Flow (Intracellular), Knockout Validated
Application Notes	Optimal dilution of this antibody should be experimentally determined.

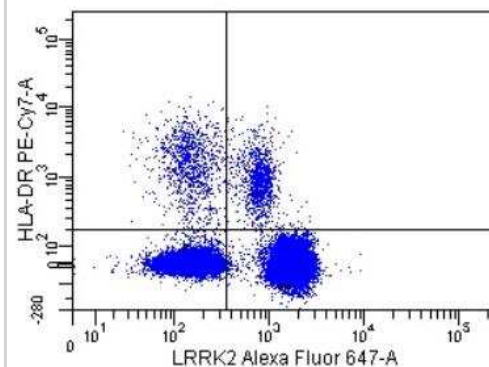


Images

Flow Cytometry: LRRK2 Antibody [Alexa Fluor® 647] [NB300-268AF647]
 - An intracellular stain was performed on U2OS cells with LRRK Antibody NB300-268AF647 (blue) and a matched isotype control (orange). Cells were fixed with 4% PFA and then permeabilized with 0.1% saponin. Cells were incubated in an antibody dilution of 2.5 ug/mL for 30 minutes at room temperature. Both antibodies were conjugated to Alexa Fluor 647.



Flow Cytometry: LRRK2 Antibody [Alexa Fluor (R) 647] [NB300-268AF647] - analysis of LRRK2 in normal human peripheral blood cells (anticoagulated Lithium-Heparin) using anti-LRRK2 antibody conjugated with AF647. The primary antibody was used at a dilution of 1:200 and incubated for 20 min at room temperature. Image from verified customer review.



Publications

Bliederaeuser C, Zondler L, Grozdanov V et al. LRRK2 contributes to monocyte dysregulation in Parkinson's disease. *Acta Neuropathol Commun.* 2016-11-24 [PMID: 27884177] (FLOW, Mouse, Human)



Novus Biologicals USA

10730 E. Briarwood Avenue
Centennial, CO 80112
USA
Phone: 303.730.1950
Toll Free: 1.888.506.6887
Fax: 303.730.1966
nb-customerservice@bio-techne.com

Bio-Techne Canada

21 Canmotor Ave
Toronto, ON M8Z 4E6
Canada
Phone: 905.827.6400
Toll Free: 855.668.8722
Fax: 905.827.6402
canada.inquires@bio-techne.com

Bio-Techne Ltd

19 Barton Lane
Abingdon Science Park
Abingdon, OX14 3NB, United Kingdom
Phone: (44) (0) 1235 529449
Free Phone: 0800 37 34 15
Fax: (44) (0) 1235 533420
info.EMEA@bio-techne.com

General Contact Information

www.novusbio.com
Technical Support: nb-technical@bio-techne.com
Orders: nb-customerservice@bio-techne.com
General: novus@novusbio.com

Products Related to NB300-268AF647

NBP2-24891AF647	Rabbit IgG Isotype Control [Alexa Fluor® 647]
NB300-268AF700	LRRK2 Antibody [Alexa Fluor® 700]
NB300-268PEP	LRRK2 Antibody Blocking Peptide
NB100-938-1Pack	LRRK2 Antibody Pack

Limitations

This product is for research use only and is not approved for use in humans or in clinical diagnosis. Primary Antibodies are guaranteed for 1 year from date of receipt.

For more information on our 100% guarantee, please visit www.novusbio.com/guarantee

Earn gift cards/discounts by submitting a review: www.novusbio.com/reviews/submit/NB300-268AF647

Earn gift cards/discounts by submitting a publication using this product:
www.novusbio.com/publications

