

# Product Datasheet

## VEGFR2/KDR/FIk-1 Antibody (EIC) [Allphycocyanin] NB200-208APC

Unit Size: 0.1 ml

Store at 4C in the dark.

[www.novusbio.com](http://www.novusbio.com)



[technical@novusbio.com](mailto:technical@novusbio.com)

**Reviews: 1**

Protocols, Publications, Related Products, Reviews, Research Tools and Images at:  
[www.novusbio.com/NB200-208APC](http://www.novusbio.com/NB200-208APC)

Updated 9/10/2023 v.20.1

Earn rewards for product  
reviews and publications.

Submit a publication at [www.novusbio.com/publications](http://www.novusbio.com/publications)

Submit a review at [www.novusbio.com/reviews/destination/NB200-208APC](http://www.novusbio.com/reviews/destination/NB200-208APC)



**NB200-208APC**

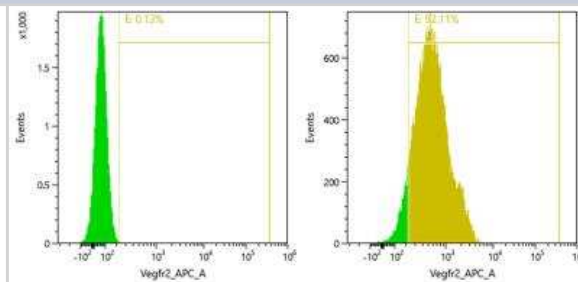
VEGFR2/KDR/FIk-1 Antibody (EIC) [Allophycocyanin]

<b>Product Information</b>	
<b>Unit Size</b>	0.1 ml
<b>Concentration</b>	Please see the vial label for concentration. If unlisted please contact technical services.
<b>Storage</b>	Store at 4C in the dark.
<b>Clonality</b>	Monoclonal
<b>Clone</b>	EIC
<b>Preservative</b>	0.05% Sodium Azide
<b>Isotype</b>	IgG1
<b>Conjugate</b>	Allophycocyanin
<b>Purity</b>	Protein G purified
<b>Buffer</b>	PBS
<b>Product Description</b>	
<b>Host</b>	Mouse
<b>Gene ID</b>	3791
<b>Gene Symbol</b>	KDR
<b>Species</b>	Human, Rat
<b>Reactivity Notes</b>	Rat reactivity reported in scientific literature (PMID: 20837901).
<b>Marker</b>	Endothelial Cell Marker
<b>Specificity/Sensitivity</b>	The monoclonal will detect native human VEGFR-2 / KDR in ELISA experiments and on the surface of different human cell types.
<b>Immunogen</b>	Recombinant human soluble extracellular KDR (D7)
<b>Notes</b>	This conjugate is made on demand. Actual recovery may vary from the stated volume of this product. The volume will be greater than or equal to the unit size stated on the datasheet.
<b>Product Application Details</b>	
<b>Applications</b>	Western Blot, ELISA, Flow Cytometry, Immunocytochemistry/ Immunofluorescence, Immunohistochemistry, Immunohistochemistry-Paraffin, CyTOF-ready
<b>Recommended Dilutions</b>	Western Blot, Flow Cytometry, ELISA, Immunohistochemistry, Immunocytochemistry/ Immunofluorescence, Immunohistochemistry-Paraffin, CyTOF-ready



## Images

Flow Cytometry: VEGF R2/KDR/Flk-1 Antibody (EIC) [Allophycocyanin] [NB200-208APC] - HUVECs were unstained (left) or stained (right) with VEGFR-2/KDR. Image from verified customer review.





### **Novus Biologicals USA**

10730 E. Briarwood Avenue  
Centennial, CO 80112  
USA

Phone: 303.730.1950

Toll Free: 1.888.506.6887

Fax: 303.730.1966

[nb-customerservice@bio-techne.com](mailto:nb-customerservice@bio-techne.com)

### **Bio-Techne Canada**

21 Canmotor Ave  
Toronto, ON M8Z 4E6  
Canada

Phone: 905.827.6400

Toll Free: 855.668.8722

Fax: 905.827.6402

[canada.inquires@bio-techne.com](mailto:canada.inquires@bio-techne.com)

### **Bio-Techne Ltd**

19 Barton Lane  
Abingdon Science Park  
Abingdon, OX14 3NB, United Kingdom

Phone: (44) (0) 1235 529449

Free Phone: 0800 37 34 15

Fax: (44) (0) 1235 533420

[info.EMEA@bio-techne.com](mailto:info.EMEA@bio-techne.com)

### **General Contact Information**

[www.novusbio.com](http://www.novusbio.com)

Technical Support: [nb-technical@bio-techne.com](mailto:nb-technical@bio-techne.com)

Orders: [nb-customerservice@bio-techne.com](mailto:nb-customerservice@bio-techne.com)

General: [novus@novusbio.com](mailto:novus@novusbio.com)

### **Limitations**

This product is for research use only and is not approved for use in humans or in clinical diagnosis. Primary Antibodies are guaranteed for 1 year from date of receipt.

For more information on our 100% guarantee, please visit [www.novusbio.com/guarantee](http://www.novusbio.com/guarantee)

Earn gift cards/discounts by submitting a review: [www.novusbio.com/reviews/submit/NB200-208APC](http://www.novusbio.com/reviews/submit/NB200-208APC)

Earn gift cards/discounts by submitting a publication using this product:  
[www.novusbio.com/publications](http://www.novusbio.com/publications)

