

Product Datasheet

CLEC10A/CD301 Antibody (ER-MP23) [Alexa Fluor® 647] NB100-64874AF647

Unit Size: 0.125 ml

Store at 4C in the dark.

www.novusbio.com



technical@novusbio.com

Publications: 1

Protocols, Publications, Related Products, Reviews, Research Tools and Images at:
www.novusbio.com/NB100-64874AF647

Updated 10/23/2024 v.20.1

**Earn rewards for product
reviews and publications.**

Submit a publication at www.novusbio.com/publications

Submit a review at www.novusbio.com/reviews/destination/NB100-64874AF647



NB100-64874AF647

CLEC10A/CD301 Antibody (ER-MP23) [Alexa Fluor® 647]

Product Information	
Unit Size	0.125 ml
Concentration	Please see the vial label for concentration. If unlisted please contact technical services.
Storage	Store at 4C in the dark.
Clonality	Monoclonal
Clone	ER-MP23
Preservative	0.05% Sodium Azide
Isotype	IgG2a
Conjugate	Alexa Fluor 647
Purity	Protein G purified
Buffer	50mM Sodium Borate
Product Description	
Host	Rat
Gene ID	10462
Gene Symbol	CLEC10A
Species	Mouse
Specificity/Sensitivity	NB100-64874 recognizes murine CD301, a 38 kD cell surface protein that is otherwise known as macrophage galactose N-acetylgalactosamine lectin (MGL) or dendritic cell asialoglycoprotein (DC-ASGPR). In mice, CD301 is predominantly expressed on mature macrophages found associated with a wide range of connective tissues including macrophages in the dermis and the pancreas. Clone ER-MP23 also detects a population of dendritic cells in lymphoid tissue, which are probably recent immigrants from peripheral connective tissue sites. Expression of CD301 is induced by alternative (i.e. IL-4/IL-13 mediated) activation of macrophages and dendritic cells, but not all CD301 positive cells are necessarily IL-4/IL-13 stimulated. Clone ER-MP23 is reported to block the function of mouse CD301. The antibody binds both MGL1 and MGL2 homologues.
Immunogen	Balb/c macrophage precursor cell hybrids



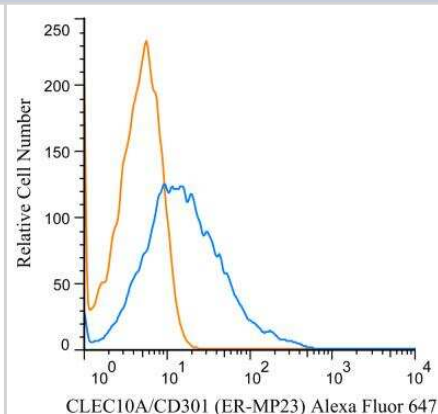
Notes	<p>Alexa Fluor (R) products are provided under an intellectual property license from Life Technologies Corporation. The purchase of this product conveys to the buyer the non-transferable right to use the purchased product and components of the product only in research conducted by the buyer (whether the buyer is an academic or for-profit entity). The sale of this product is expressly conditioned on the buyer not using the product or its components, or any materials made using the product or its components, in any activity to generate revenue, which may include, but is not limited to use of the product or its components: (i) in manufacturing; (ii) to provide a service, information, or data in return for payment; (iii) for therapeutic, diagnostic or prophylactic purposes; or (iv) for resale, regardless of whether they are resold for use in research. For information on purchasing a license to this product for purposes other than as described above, contact Life Technologies Corporation, 5791 Van Allen Way, Carlsbad, CA 92008 USA or outlicensing@lifetech.com. This conjugate is made on demand. Actual recovery may vary from the stated volume of this product. The volume will be greater than or equal to the unit size stated on the datasheet.</p>
--------------	--

Product Application Details

Applications	Flow Cytometry, Immunocytochemistry/ Immunofluorescence, Immunohistochemistry, Immunohistochemistry-Frozen
Recommended Dilutions	Flow Cytometry, Immunohistochemistry, Immunocytochemistry/ Immunofluorescence, Immunohistochemistry-Frozen

Images

Flow Cytometry: CLEC10A/CD301 Antibody (ER-MP23) [Alexa Fluor (R) 647] [NB100-64874AF647] - A surface stain was performed on RAW 246.7 cells with CLEC10A/CD301 antibody (ER-MP23) NB100-64874AF647 (blue) and a matched isotype control (orange). Cells were incubated in an antibody dilution of 2 ug/mL for 20 minutes at room temperature. Both antibodies were conjugated to Alexa Fluor 647.



Publications

Luan D, Dadpey B, Zaid J et al. Adipocyte-Secreted IL-6 Sensitizes Macrophages to IL-4 Signaling Diabetes 2023-03-01 [PMID: 36449000] (FLOW, Mouse)



Novus Biologicals USA

10730 E. Briarwood Avenue
Centennial, CO 80112
USA
Phone: 303.730.1950
Toll Free: 1.888.506.6887
Fax: 303.730.1966
nb-customerservice@bio-techne.com

Bio-Techne Canada

21 Canmotor Ave
Toronto, ON M8Z 4E6
Canada
Phone: 905.827.6400
Toll Free: 855.668.8722
Fax: 905.827.6402
canada.inquires@bio-techne.com

Bio-Techne Ltd

19 Barton Lane
Abingdon Science Park
Abingdon, OX14 3NB, United Kingdom
Phone: (44) (0) 1235 529449
Free Phone: 0800 37 34 15
Fax: (44) (0) 1235 533420
info.EMEA@bio-techne.com

General Contact Information

www.novusbio.com
Technical Support: nb-technical@bio-techne.com
Orders: nb-customerservice@bio-techne.com
General: novus@novusbio.com

Products Related to NB100-64874AF647

IC006R	Rat IgG2a Isotype Control (54447) [Alexa Fluor® 647]
NB100-64874AF700	CLEC10A/CD301 Antibody (ER-MP23) [Alexa Fluor® 700]
NBP1-84591PEP	CLEC10A/CD301 Recombinant Protein Antigen
H00008294-P01-10ug	Recombinant Human HIST1H4I GST (N-Term) Protein

Limitations

This product is for research use only and is not approved for use in humans or in clinical diagnosis. Primary Antibodies are guaranteed for 1 year from date of receipt.

For more information on our 100% guarantee, please visit www.novusbio.com/guarantee

Earn gift cards/discounts by submitting a review: www.novusbio.com/reviews/submit/NB100-64874AF647

Earn gift cards/discounts by submitting a publication using this product:
www.novusbio.com/publications

