

# Product Datasheet

## EAAT1/GLAST-1/SLC1A3 Antibody [Alexa Fluor® 488] NB100-1869AF488

Unit Size: 0.1 ml

Store at 4C in the dark.

[www.novusbio.com](http://www.novusbio.com)



[technical@novusbio.com](mailto:technical@novusbio.com)

Reviews: 1

Protocols, Publications, Related Products, Reviews, Research Tools and Images at:  
[www.novusbio.com/NB100-1869AF488](http://www.novusbio.com/NB100-1869AF488)

Updated 10/23/2024 v.20.1

Earn rewards for product  
reviews and publications.

Submit a publication at [www.novusbio.com/publications](http://www.novusbio.com/publications)

Submit a review at [www.novusbio.com/reviews/destination/NB100-1869AF488](http://www.novusbio.com/reviews/destination/NB100-1869AF488)



**NB100-1869AF488**

EAAT1/GLAST-1/SLC1A3 Antibody [Alexa Fluor® 488]

Product Information	
Unit Size	0.1 ml
Concentration	Please see the vial label for concentration. If unlisted please contact technical services.
Storage	Store at 4C in the dark.
Clonality	Polyclonal
Preservative	0.05% Sodium Azide
Isotype	IgG
Conjugate	Alexa Fluor 488
Purity	Immunogen affinity purified
Buffer	50mM Sodium Borate
Product Description	
Host	Rabbit
Gene ID	6507
Gene Symbol	SLC1A3
Species	Human, Mouse, Rat
Immunogen	A synthetic peptide made to a C-terminal portion of the rat SLC1A3 protein (between residues 500-542) [Uniprot: P24942]
Notes	Alexa Fluor (R) products are provided under an intellectual property license from Life Technologies Corporation. The purchase of this product conveys to the buyer the non-transferable right to use the purchased product and components of the product only in research conducted by the buyer (whether the buyer is an academic or for-profit entity). The sale of this product is expressly conditioned on the buyer not using the product or its components, or any materials made using the product or its components, in any activity to generate revenue, which may include, but is not limited to use of the product or its components: (i) in manufacturing; (ii) to provide a service, information, or data in return for payment; (iii) for therapeutic, diagnostic or prophylactic purposes; or (iv) for resale, regardless of whether they are resold for use in research. For information on purchasing a license to this product for purposes other than as described above, contact Life Technologies Corporation, 5791 Van Allen Way, Carlsbad, CA 92008 USA or <a href="mailto:outlicensing@lifetech.com">outlicensing@lifetech.com</a> . This conjugate is made on demand. Actual recovery may vary from the stated volume of this product. The volume will be greater than or equal to the unit size stated on the datasheet.
Product Application Details	
Applications	Western Blot, ELISA, Flow Cytometry, Flow (Intracellular), Immunocytochemistry/ Immunofluorescence, Immunohistochemistry, Immunohistochemistry-Frozen, Immunohistochemistry-Paraffin
Recommended Dilutions	Western Blot, Flow Cytometry, ELISA, Immunohistochemistry, Immunocytochemistry/ Immunofluorescence, Immunohistochemistry-Paraffin, Immunohistochemistry-Frozen, Flow (Intracellular)
Application Notes	Optimal dilution of this antibody should be experimentally determined.

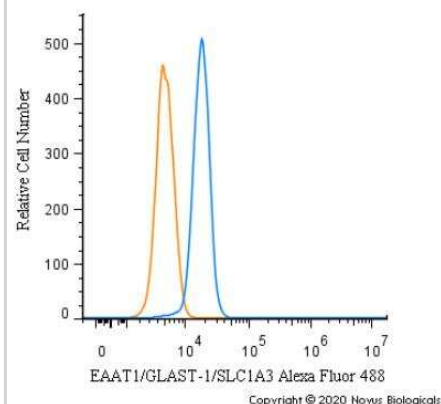


## Images

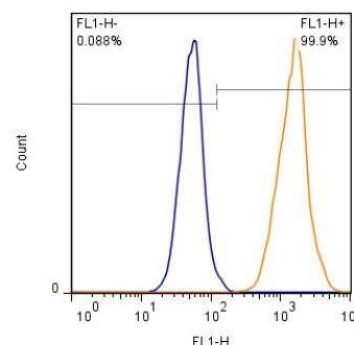
**Immunohistochemistry-Frozen: EAAT1/GLAST-1/SLC1A3 Antibody [Alexa Fluor® 488] [NB100-1869AF488]** - EAAT-1/GLAST is expressed in inner phalangeal and inner border cells adjacent to inner hair cells in 1 week old mouse cochlea. IHC-Fr image submitted by a verified customer review.



**Flow Cytometry: EAAT1/GLAST-1/SLC1A3 Antibody [Alexa Fluor® 488] [NB100-1869AF488]** - An intracellular stain was performed on Hek293 cells with EAAT1/GLAST-1/SLC1A3 Antibody NB100-1869AF488 (blue) and a matched isotype control (orange). Cells were fixed with 4% PFA and then permeabilized with 0.1% saponin. Cells were incubated in an antibody dilution of 5 ug/mL for 30 minutes at room temperature. Both antibodies were conjugated to Alexa Fluor 488.



**Flow (Intracellular): EAAT1/GLAST-1/SLC1A3 Antibody [Alexa Fluor 488] [NB100-1869AF488]** - Intracellular staining of HEK293 cells ( $1 \times 10^6$  cells/ml) with EAAT-1 antibody (orange) stained at a dilution of 1:500. Shown with rIgG (AF488) isotype control (blue).



**Novus Biologicals USA**

10730 E. Briarwood Avenue  
Centennial, CO 80112  
USA  
Phone: 303.730.1950  
Toll Free: 1.888.506.6887  
Fax: 303.730.1966  
nb-customerservice@bio-techne.com

**Bio-Techne Canada**

21 Canmotor Ave  
Toronto, ON M8Z 4E6  
Canada  
Phone: 905.827.6400  
Toll Free: 855.668.8722  
Fax: 905.827.6402  
canada.inquires@bio-techne.com

**Bio-Techne Ltd**

19 Barton Lane  
Abingdon Science Park  
Abingdon, OX14 3NB, United Kingdom  
Phone: (44) (0) 1235 529449  
Free Phone: 0800 37 34 15  
Fax: (44) (0) 1235 533420  
info.EMEA@bio-techne.com

**General Contact Information**

www.novusbio.com  
Technical Support: nb-technical@bio-techne.com  
Orders: nb-customerservice@bio-techne.com  
General: novus@novusbio.com

**Products Related to NB100-1869AF488**

---

NBP2-24982	Rabbit IgG Isotype Control [Alexa Fluor® 488]
NB100-1869PEP	EAAT1/GLAST-1/SLC1A3 Antibody Blocking Peptide
236-EG-200	EGF [Unconjugated]
H00006507-Q01-10ug	Recombinant Human EAAT1/GLAST-1/SLC1A3 GST (N-Term) Protein

---

**Limitations**

This product is for research use only and is not approved for use in humans or in clinical diagnosis. Primary Antibodies are guaranteed for 1 year from date of receipt.

For more information on our 100% guarantee, please visit [www.novusbio.com/guarantee](http://www.novusbio.com/guarantee)

Earn gift cards/discounts by submitting a review: [www.novusbio.com/reviews/submit/NB100-1869AF488](http://www.novusbio.com/reviews/submit/NB100-1869AF488)

Earn gift cards/discounts by submitting a publication using this product:  
[www.novusbio.com/publications](http://www.novusbio.com/publications)

