

# Product Datasheet

## EGF Antibody 26610002-0.1mg

Unit Size: 0.1 mg

Store at 4C short term. Aliquot and store at -20C long term. Avoid freeze-thaw cycles.

[www.novusbio.com](http://www.novusbio.com)



[technical@novusbio.com](mailto:technical@novusbio.com)

### Publications: 2

Protocols, Publications, Related Products, Reviews, Research Tools and Images at:  
[www.novusbio.com/26610002](http://www.novusbio.com/26610002)

Updated 4/3/2021 v.20.1

Earn rewards for product  
reviews and publications.

Submit a publication at [www.novusbio.com/publications](http://www.novusbio.com/publications)

Submit a review at [www.novusbio.com/reviews/destination/26610002](http://www.novusbio.com/reviews/destination/26610002)



**26610002-0.1mg**

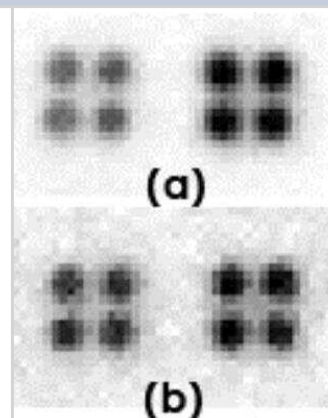
EGF Antibody

Product Information	
Unit Size	0.1 mg
Concentration	Please see the vial label for concentration. If unlisted please contact technical services.
Storage	Store at 4C short term. Aliquot and store at -20C long term. Avoid freeze-thaw cycles.
Clonality	Polyclonal
Preservative	No Preservative
Isotype	IgG
Purity	Immunogen affinity purified
Buffer	20mM Potassium Phosphate (pH 7.0) and 0.15M NaCl
Product Description	
Host	Rabbit
Gene ID	1950
Gene Symbol	EGF
Species	Human
Reactivity Notes	Human.
Specificity/Sensitivity	This product is specific for Human EGF.
Immunogen	This antibody is specific for the C Terminus Region of the target protein.
Notes	Manufactured by SDIX's proprietary Genomic Antibody Technology <sup>®</sup> ; GAT <a href="#">FAQs</a> .
Product Application Details	
Applications	Dot Blot, ELISA, Immunohistochemistry, Immunohistochemistry-Paraffin
Recommended Dilutions	ELISA 1:100-1:2000, Immunohistochemistry 1:10-1:500, Immunohistochemistry-Paraffin 1:250-1:2000, Dot Blot 1:100-1:2000
Application Notes	This antibody is useful in Dot Blot, ELISA and Immunohistochemistry-Paraffin.

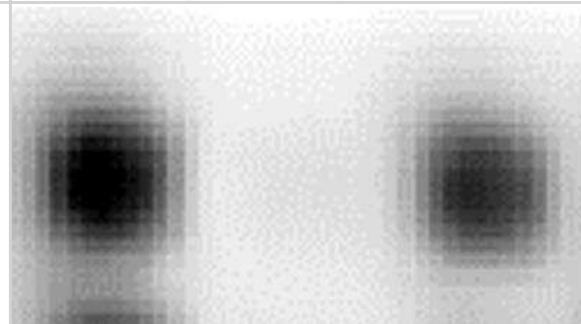


## Images

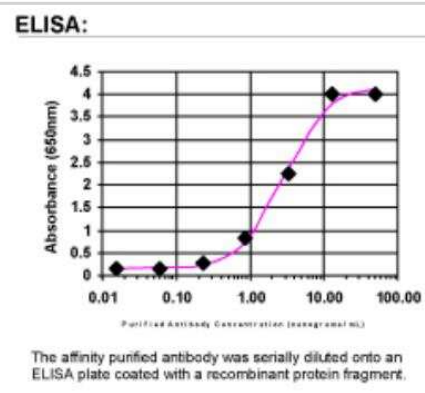
Dot Blot: EGF Antibody [26610002] - The anti-EGF antibody (left quadruplicate spots at each panel) or control antibody (right quadruplicate spots at each panel) were printed on membranes at 10 ng/spot. The membranes were incubated with biotinylated cell lysate (50 ug per membrane), followed by probing with streptavidin-HRP and CCD camera image acquisition. (a), Cell lysate from Jurkat cells; (b), Cell lysate from 293T cells. Data courtesy of a SDI customer.



Dot Blot: EGF Antibody [26610002] - Protein samples (left spot: 293T cell lysate; right spot: Jurkat cell lysate) were printed on membranes at 40 ng/spot. The membrane was incubated with anti-EGF antibody (1:4000 dilution) and then probed anti-rabbit IgG-HRP. Signals were acquired with a CCD camera. Data courtesy of a SDI customer.



ELISA: EGF Antibody [26610002]



## Publications

Garrison C, Lastwika K, Zhang Y et al. Proteomic Analysis, Immune Dysregulation, and Pathway Interconnections With Obesity J Proteome Res. 2017-01-06 [PMID: 27769113] (MiAr)

Details:

Analysis is performed on plasma proteomic data to identify how obesity can alter pathways and to highlight the risk factor for disease in subjects with a high body mass index.

Rho JH, Lampe PD. High-throughput screening for native autoantigen-autoantibody complexes using antibody microarrays J Proteome Res. 2013-05-03 [PMID: 23541305] (MiAr)

Details:

A novel method using antibody microarrays is used to detect autoantibody-antigen complexes that can potentially be useful for detection and characterization of diseases.



### **Novus Biologicals USA**

10730 E. Briarwood Avenue  
Centennial, CO 80112  
USA

Phone: 303.730.1950  
Toll Free: 1.888.506.6887  
Fax: 303.730.1966  
novus@novusbio.com

### **Bio-Techne Canada**

21 Canmotor Ave  
Toronto, ON M8Z 4E6  
Canada

Phone: 905.827.6400  
Toll Free: 855.668.8722  
Fax: 905.827.6402  
canada.inquires@bio-techne.com

### **Bio-Techne Ltd**

19 Barton Lane  
Abingdon Science Park  
Abingdon, OX14 3NB, United Kingdom  
Phone: (44) (0) 1235 529449  
Free Phone: 0800 37 34 15  
Fax: (44) (0) 1235 533420  
info.EMEA@bio-techne.com

### **General Contact Information**

www.novusbio.com  
Technical Support: technical@novusbio.com  
Orders: orders@novusbio.com  
General: novus@novusbio.com

### **Limitations**

This product is for research use only and is not approved for use in humans or in clinical diagnosis. Primary Antibodies are guaranteed for 1 year from date of receipt.

For more information on our 100% guarantee, please visit [www.novusbio.com/guarantee](http://www.novusbio.com/guarantee)

Earn gift cards/discounts by submitting a review: [www.novusbio.com/reviews/submit/26610002](http://www.novusbio.com/reviews/submit/26610002)

Earn gift cards/discounts by submitting a publication using this product:  
[www.novusbio.com/publications](http://www.novusbio.com/publications)

