

Product Datasheet

SUR1 Antibody **19600002-0.1mg**

Unit Size: 0.1 mg

Store at 4C short term. Aliquot and store at -20C long term. Avoid freeze-thaw cycles.

www.novusbio.com



technical@novusbio.com

Publications: 2

Protocols, Publications, Related Products, Reviews, Research Tools and Images at:
www.novusbio.com/19600002

Updated 4/3/2021 v.20.1

**Earn rewards for product
reviews and publications.**

Submit a publication at www.novusbio.com/publications

Submit a review at www.novusbio.com/reviews/destination/19600002



19600002-0.1mg

SUR1 Antibody

Product Information

Unit Size	0.1 mg
Concentration	Please see the vial label for concentration. If unlisted please contact technical services.
Storage	Store at 4C short term. Aliquot and store at -20C long term. Avoid freeze-thaw cycles.
Clonality	Polyclonal
Preservative	No Preservative
Isotype	IgG
Purity	Immunogen affinity purified
Buffer	20mM Potassium Phosphate (pH 7.0) and 0.15M NaCl

Product Description

Host	Rabbit
Gene ID	6833
Gene Symbol	ABCC8
Species	Human
Reactivity Notes	Human.
Specificity/Sensitivity	This product is specific for Human SUR1.
Immunogen	This antibody is specific for the Middle Region of the target protein.
Notes	Manufactured by SDIX's proprietary Genomic Antibody Technology™; GAT FAQs .

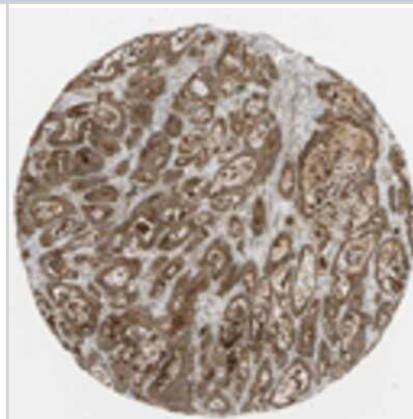
Product Application Details

Applications	ELISA, Immunohistochemistry, Immunohistochemistry-Paraffin
Recommended Dilutions	ELISA 1:100-1:2000, Immunohistochemistry 1:10-1:500, Immunohistochemistry-Paraffin 1:10-1:500
Application Notes	This antibody is useful in ELISA and Immunohistochemistry-Paraffin.



Images

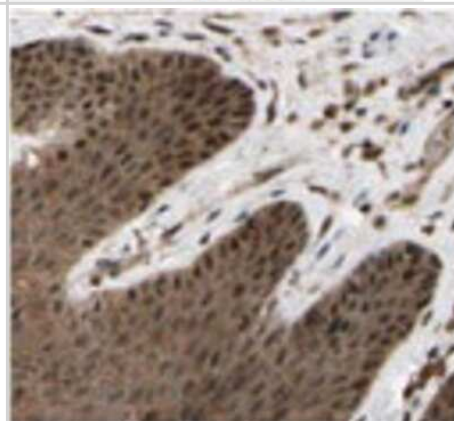
Immunohistochemistry: SUR1 Antibody [19600002] - Most normal tissues exhibited moderate to strong cytoplasmic expression. Membranous staining pattern was seen in the intestinal tissues. Strong cytoplasmic immunoreactivity was observed in salivary gland, exocrine pancreas, skeletal muscle and non-follicle cells of lymph node. Purkinje cells and adrenal cortical cells demonstrated strong nuclear positivity. Malignant tissues generally displayed weak to moderate cytoplasmic expression. Strong membranous staining pattern was observed in colo-rectal cancers. Nuclear staining was mainly seen in non-Hodgkin's lymphomas, urothelial cancers and malignant gliomas. Image and statement courtesy of the Human Protein Atlas (HPA).



Immunohistochemistry: SUR1 Antibody [19600002] - Strong membranous staining pattern observed in colo-rectal cancers by immunohistochemistry. Image is provided courtesy of the Swedish Human Proteome Resource (HPR) Center.

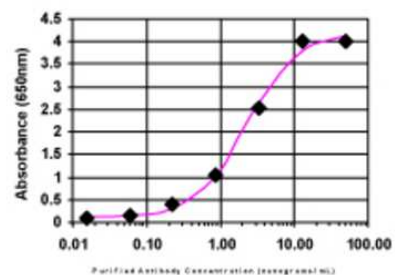


Immunohistochemistry: SUR1 Antibody [19600002] - IHC using anti ABCC8 SEQer antibody



ELISA: SUR1 Antibody [19600002]

ELISA:



The affinity purified antibody was serially diluted onto an ELISA plate coated with a recombinant protein fragment.

Publications

Garrison C, Lastwika K, Zhang Y et al. Proteomic Analysis, Immune Dysregulation, and Pathway Interconnections With Obesity J Proteome Res. 2017-01-06 [PMID: 27769113] (MiAr)

Details:

Analysis is performed on plasma proteomic data to identify how obesity can alter pathways and to highlight the risk factor for disease in subjects with a high body mass index.

Rho JH, Lampe PD. High-throughput screening for native autoantigen-autoantibody complexes using antibody microarrays J Proteome Res. 2013-05-03 [PMID: 23541305] (MiAr)

Details:

A novel method using antibody microarrays is used to detect autoantibody-antigen complexes that can potentially be useful for detection and characterization of diseases.





Novus Biologicals USA

10730 E. Briarwood Avenue
Centennial, CO 80112
USA
Phone: 303.730.1950
Toll Free: 1.888.506.6887
Fax: 303.730.1966
nb-customerservice@bio-techne.com

Bio-Techne Canada

21 Canmotor Ave
Toronto, ON M8Z 4E6
Canada
Phone: 905.827.6400
Toll Free: 855.668.8722
Fax: 905.827.6402
canada.inquires@bio-techne.com

Bio-Techne Ltd

19 Barton Lane
Abingdon Science Park
Abingdon, OX14 3NB, United Kingdom
Phone: (44) (0) 1235 529449
Free Phone: 0800 37 34 15
Fax: (44) (0) 1235 533420
info.EMEA@bio-techne.com

General Contact Information

www.novusbio.com
Technical Support: nb-technical@bio-
techne.com
Orders: nb-customerservice@bio-techne.com
General: novus@novusbio.com

Limitations

This product is for research use only and is not approved for use in humans or in clinical diagnosis. Primary Antibodies are guaranteed for 1 year from date of receipt.

For more information on our 100% guarantee, please visit www.novusbio.com/guarantee

Earn gift cards/discounts by submitting a review: www.novusbio.com/reviews/submit/19600002

Earn gift cards/discounts by submitting a publication using this product:
www.novusbio.com/publications

