

Product Datasheet

EpCAM/TROP1 Antibody 19300002-0.1mg

Unit Size: 0.1 mg

Store at 4C short term. Aliquot and store at -20C long term. Avoid freeze-thaw cycles.

www.novusbio.com



technical@novusbio.com

Publications: 2

Protocols, Publications, Related Products, Reviews, Research Tools and Images at:
www.novusbio.com/19300002

Updated 3/21/2022 v.20.1

Earn rewards for product
reviews and publications.

Submit a publication at www.novusbio.com/publications

Submit a review at www.novusbio.com/reviews/destination/19300002



19300002-0.1mg**EpCAM/TROP1 Antibody**

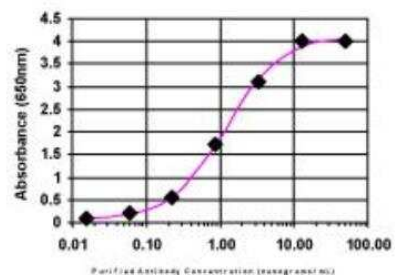
| Product Information | |
|----------------------------|---|
| Unit Size | 0.1 mg |
| Concentration | Please see the vial label for concentration. If unlisted please contact technical services. |
| Storage | Store at 4C short term. Aliquot and store at -20C long term. Avoid freeze-thaw cycles. |
| Clonality | Polyclonal |
| Preservative | No Preservative |
| Isotype | IgG |
| Purity | Immunogen affinity purified |
| Buffer | 20mM Potassium Phosphate (pH 7.0) and 0.15M NaCl |

| Product Description | |
|--------------------------------|--|
| Host | Rabbit |
| Gene ID | 4072 |
| Gene Symbol | EPCAM |
| Species | Human |
| Reactivity Notes | Human. |
| Specificity/Sensitivity | This product is specific for Human EpCAM. |
| Immunogen | This antibody is specific for the N Terminus Region of the target protein (NM_002354). |
| Notes | Manufactured by SDIX's proprietary Genomic Antibody Technology [™] ; GAT FAQs . |

| Product Application Details | |
|------------------------------------|--|
| Applications | Western Blot, ELISA |
| Recommended Dilutions | Western Blot 1:5000-1:20000, ELISA 1:100-1:2000 |
| Application Notes | This antibody is useful in ELISA and Western Blot. |

Images

ELISA: EpCAM/TROP1 Antibody [19300002] - Affinity Purified

ELISA:

The affinity purified antibody was serially diluted onto an ELISA plate coated with a recombinant protein fragment.

Publications

Garrison C, Lastwika K, Zhang Y et al. Proteomic Analysis, Immune Dysregulation, and Pathway Interconnections With Obesity J Proteome Res. 2017-01-06 [PMID: 27769113] (MiAr)

Details:

Analysis is performed on plasma proteomic data to identify how obesity can alter pathways and to highlight the risk factor for disease in subjects with a high body mass index.

Rho JH, Lampe PD. High-throughput screening for native autoantigen-autoantibody complexes using antibody microarrays J Proteome Res. 2013-05-03 [PMID: 23541305] (MiAr)

Details:

A novel method using antibody microarrays is used to detect autoantibody-antigen complexes that can potentially be useful for detection and characterization of diseases.





Novus Biologicals USA

10730 E. Briarwood Avenue
Centennial, CO 80112
USA
Phone: 303.730.1950
Toll Free: 1.888.506.6887
Fax: 303.730.1966
nb-customerservice@bio-techne.com

Bio-Techne Canada

21 Canmotor Ave
Toronto, ON M8Z 4E6
Canada
Phone: 905.827.6400
Toll Free: 855.668.8722
Fax: 905.827.6402
canada.inquires@bio-techne.com

Bio-Techne Ltd

19 Barton Lane
Abingdon Science Park
Abingdon, OX14 3NB, United Kingdom
Phone: (44) (0) 1235 529449
Free Phone: 0800 37 34 15
Fax: (44) (0) 1235 533420
info.EMEA@bio-techne.com

General Contact Information

www.novusbio.com
Technical Support: nb-technical@bio-techne.com
Orders: nb-customerservice@bio-techne.com
General: novus@novusbio.com

Limitations

This product is for research use only and is not approved for use in humans or in clinical diagnosis. Primary Antibodies are guaranteed for 1 year from date of receipt.

For more information on our 100% guarantee, please visit www.novusbio.com/guarantee

Earn gift cards/discounts by submitting a review: www.novusbio.com/reviews/submit/19300002

Earn gift cards/discounts by submitting a publication using this product:
www.novusbio.com/publications

