

# Product Datasheet

## CRLR Antibody - BSA Free

### NLS6731

Unit Size: 0.05 ml

Keep as concentrated solution. Aliquot and store at -20C or below. Avoid multiple freeze-thaw cycles.

[www.novusbio.com](http://www.novusbio.com)



[technical@novusbio.com](mailto:technical@novusbio.com)

#### Publications: 1

Protocols, Publications, Related Products, Reviews, Research Tools and Images at:  
[www.novusbio.com/NLS6731](http://www.novusbio.com/NLS6731)

Updated 10/23/2024 v.20.1

Earn rewards for product  
reviews and publications.

Submit a publication at [www.novusbio.com/publications](http://www.novusbio.com/publications)

Submit a review at [www.novusbio.com/reviews/destination/NLS6731](http://www.novusbio.com/reviews/destination/NLS6731)



**NLS6731**

CRLR Antibody - BSA Free

**Product Information**

<b>Unit Size</b>	0.05 ml
<b>Concentration</b>	1.0 mg/ml
<b>Storage</b>	Keep as concentrated solution. Aliquot and store at -20C or below. Avoid multiple freeze-thaw cycles.
<b>Clonality</b>	Polyclonal
<b>Preservative</b>	0.1% Sodium Azide
<b>Isotype</b>	IgG
<b>Purity</b>	Immunogen affinity purified
<b>Buffer</b>	PBS

**Product Description**

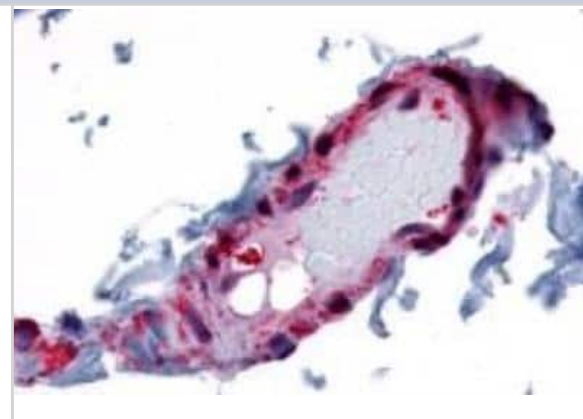
<b>Description</b>	Product can be stored undiluted at 4C for up to 1 month.
<b>Host</b>	Rabbit
<b>Gene ID</b>	10203
<b>Gene Symbol</b>	CALCRL
<b>Species</b>	Human, Rat, Porcine, Bovine, Canine, Equine, Goat, Hamster, Primate, Monkey, Rabbit, Xenopus
<b>Reactivity Notes</b>	Predicted cross-reactivity based on sequence identity: Gorilla (100%), Gibbon (100%), Marmoset (100%), Turkey (81%), Chicken (81%).
<b>Specificity/Sensitivity</b>	Human CALCRL. BLAST analysis of the peptide immunogen showed no homology with other human proteins, except CALCRL (56%).
<b>Immunogen</b>	Synthetic 16 amino acid peptide from 3rd cytoplasmic domain of human CRLR.

**Product Application Details**

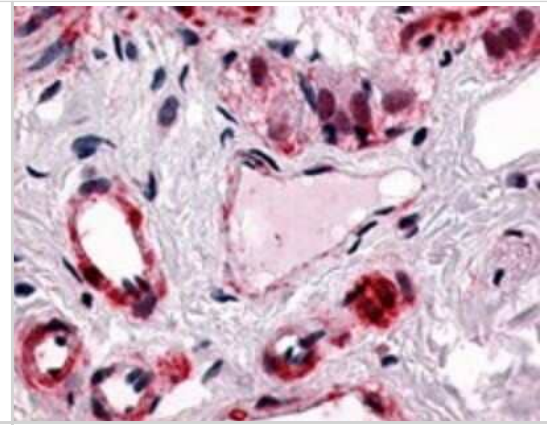
<b>Applications</b>	Immunohistochemistry, Immunohistochemistry-Paraffin
<b>Recommended Dilutions</b>	Immunohistochemistry, Immunohistochemistry-Paraffin 10-20 ug/ml

**Images**

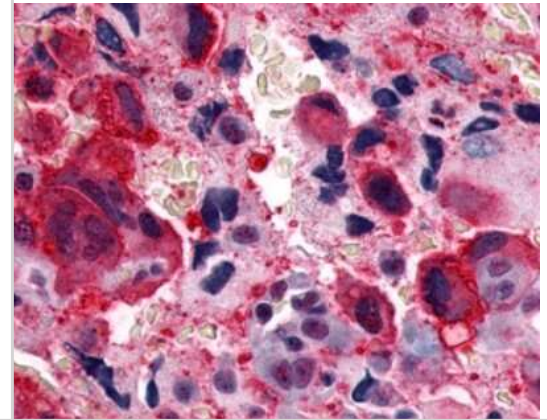
Immunohistochemistry-Paraffin: CRLR Antibody [NLS6731] - Vessel, endothelium



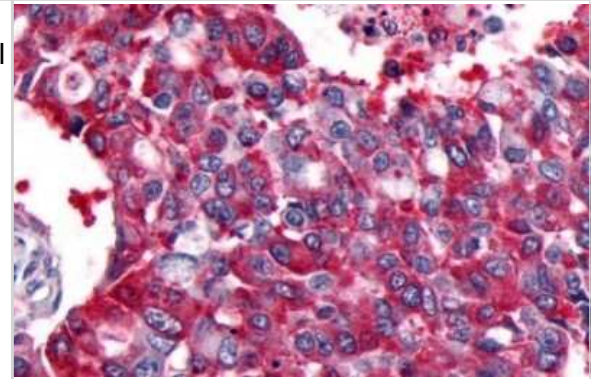
Immunohistochemistry-Paraffin: CRLR Antibody [NLS6731] - Analysis of anti-CALCRL / CGRP Receptor antibody with colon, submucosal plexus and submucosal vessels at 34 ug/ ml.



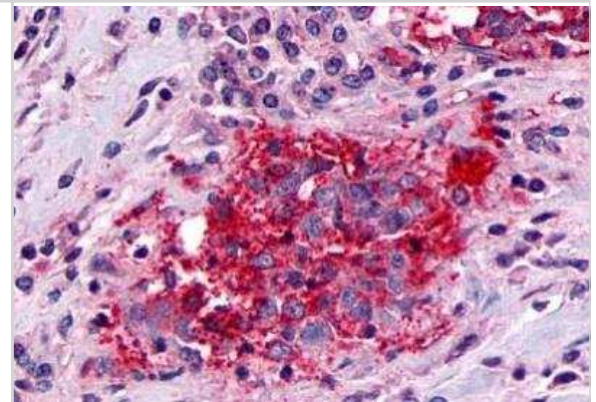
Immunohistochemistry-Paraffin: CRLR Antibody [NLS6731] - Analysis of anti-CALCRL / CGRP Receptor antibody with human bone, osteosarcoma.



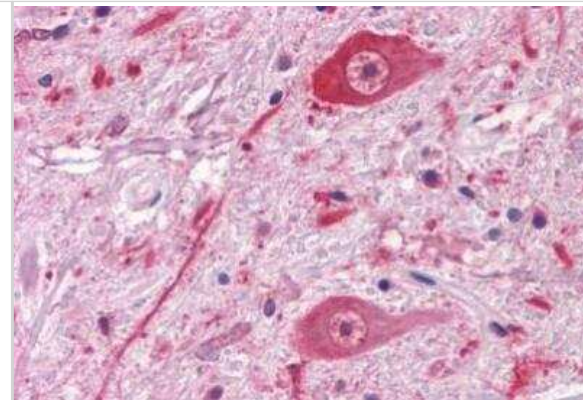
Immunohistochemistry-Paraffin: CRLR Antibody [NLS6731] - Anti-CALCRL / CGRP Receptor antibody IHC of human Lung, Non-Small Cell Carcinoma. Tissue after heat-induced antigen retrieval.



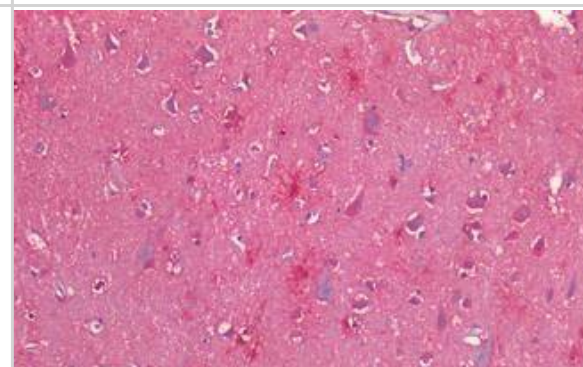
Immunohistochemistry-Paraffin: CRLR Antibody [NLS6731] - Breast, adenocarcinoma



Immunohistochemistry-Paraffin: CRLR Antibody [NLS6731] - Brain Amygdala Neurons



Immunohistochemistry-Paraffin: CRLR Antibody - BSA Free [NLS6731] - Immunohistochemistry of formalin-fixed, paraffin-embedded Human Brain, Cortex tissue



## Publications

De Logu F, Nassini R, Hegron A Et al. CGRP Signals from Endosomes of Schwann Cells to Elicit Migraine Pain Nat Commun 2022-02-04 [PMID: 35115501]

## Procedures

### Immunohistochemistry Protocol for CALCRL Antibody (NLS6731)

Immunohistochemistry Protocol for CALCRL Antibody (NLS6731):

Immunohistochemistry

1. Prepare tissue with formalin fixation and by embedding it in paraffin wax.
2. Make 4-um sections and place on pre-cleaned and charged microscope slides.
3. Heat in a tissue-drying oven for 45 minutes at 60 degrees Celcius.
4. Deparaffinize the tissues by wash drying the slides in 3 changes of xylene approximately 5 minutes each @ RT.
5. Rehydrate the tissues by washing the slides in 3 changes of 100% alcohol approximately 3 minutes each @ RT.
6. Wash the slides in 2 changes of 95% alcohol approximately 3 minutes each @ RT.
7. Wash the slides in 1 change of 80% alcohol approximately 3 minutes @ RT.
8. Rinse the slides in gentle running distilled water approximately 5 minutes @ RT.
9. Perform antigen retrieval by steaming the slides in 0.01M sodium citrate buffer (pH 6.0) @ 99-100 degrees Celcius for 20 minutes.
10. Remove the slides from the heat and let stand in buffer @ RT for 20 minutes.
11. Rinse the slides in 1X TBS-T for 1 minute @ RT.

**\*\*Do not allow the tissues to dry at any time during the staining procedure\*\***

12. Begin the immunostaining by applying a universal protein block approximately 20 minutes @ RT.
13. Drain protein block from the slides and apply the diluted primary antibody approximately 45 minutes @ RT.
14. Rinse the slide in 1X TBS-T approximately 1 minute @ RT.
15. Apply a biotinylated anti-rabbit IgG (H+L) secondary approximately 30 minutes @ RT.
16. Rinse the slide in 1X TBS-T approximately 1 minute at RT.
17. Apply an alkaline phosphatase streptavidin approximately 30 minutes at RT.
18. Rinse the slide in 1X TBS-T approximately 1 minute at RT.
19. Apply an alkaline phosphatase chromagen substrate approximately 30 minutes at RT.
20. Rinse the slide in distilled water approximately 1 minute @ RT.

**\*\*This method should only be used if the chromagen substrate is alcohol insoluble (ie: Vector Red, DAB)\*\***

21. Dehydrate the tissue by washing the slides in 2 changes of 80% alcohol approximately 1 minute each @ RT.
22. Wash the slides in 2 changes of 95% alcohol approximately 1 minute each @ RT.
23. Wash the slides in 3 changes of 100% alcohol approximately 1 minute each @ RT.
24. Wash the slides in 3 changes of xylene approximately 1 minute each @ RT.
25. Apply cover slip.







### **Novus Biologicals USA**

10730 E. Briarwood Avenue  
Centennial, CO 80112  
USA  
Phone: 303.730.1950  
Toll Free: 1.888.506.6887  
Fax: 303.730.1966  
nb-customerservice@bio-techne.com

### **Bio-Techne Canada**

21 Canmotor Ave  
Toronto, ON M8Z 4E6  
Canada  
Phone: 905.827.6400  
Toll Free: 855.668.8722  
Fax: 905.827.6402  
canada.inquires@bio-techne.com

### **Bio-Techne Ltd**

19 Barton Lane  
Abingdon Science Park  
Abingdon, OX14 3NB, United Kingdom  
Phone: (44) (0) 1235 529449  
Free Phone: 0800 37 34 15  
Fax: (44) (0) 1235 533420  
info.EMEA@bio-techne.com

### **General Contact Information**

www.novusbio.com  
Technical Support: nb-technical@bio-techne.com  
Orders: nb-customerservice@bio-techne.com  
General: novus@novusbio.com

### **Products Related to NLS6731**

---

HAF008	Goat anti-Rabbit IgG Secondary Antibody [HRP]
NB7160	Goat anti-Rabbit IgG (H+L) Secondary Antibody [HRP]
NBP2-24891	Rabbit IgG Isotype Control
H00010203-Q01-10ug	Recombinant Human CRLR GST (N-Term) Protein

---

### **Limitations**

This product is for research use only and is not approved for use in humans or in clinical diagnosis. Primary Antibodies are guaranteed for 1 year from date of receipt.

For more information on our 100% guarantee, please visit [www.novusbio.com/guarantee](http://www.novusbio.com/guarantee)

Earn gift cards/discounts by submitting a review: [www.novusbio.com/reviews/submit/NLS6731](http://www.novusbio.com/reviews/submit/NLS6731)

Earn gift cards/discounts by submitting a publication using this product:  
[www.novusbio.com/publications](http://www.novusbio.com/publications)

