

Product Datasheet

PSGR Antibody - BSA Free NLS6332

Unit Size: 0.05 ml

Keep as concentrated solution. Aliquot and store at -20C or below. Avoid multiple freeze-thaw cycles.

www.novusbio.com



technical@novusbio.com

Publications: 1

Protocols, Publications, Related Products, Reviews, Research Tools and Images at:
www.novusbio.com/NLS6332

Updated 9/11/2024 v.20.1

Earn rewards for product
reviews and publications.

Submit a publication at www.novusbio.com/publications

Submit a review at www.novusbio.com/reviews/destination/NLS6332



NLS6332

PSGR Antibody - BSA Free

Product Information

Unit Size	0.05 ml
Concentration	1.0 mg/ml
Storage	Keep as concentrated solution. Aliquot and store at -20C or below. Avoid multiple freeze-thaw cycles.
Clonality	Polyclonal
Preservative	0.1% Sodium Azide
Isotype	IgG
Purity	Immunogen affinity purified
Buffer	PBS

Product Description

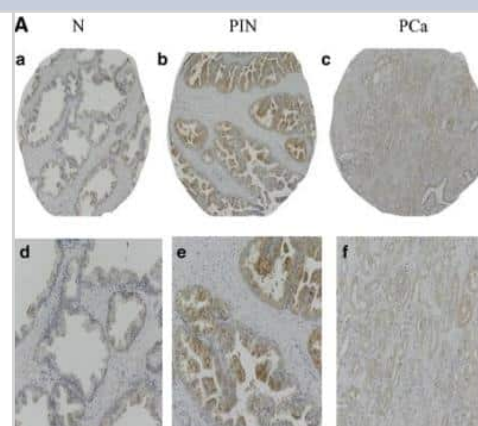
Description	Product can be stored undiluted at 4C for up to 1 month.
Host	Rabbit
Gene ID	81285
Gene Symbol	OR51E2
Species	Human, Porcine, Bat, Hamster, Primate, Monkey, Rabbit
Reactivity Notes	Predicted cross-reactivity based on sequence identity: Gorilla (100%), Gibbon (100%), Galago (100%), Marmoset (100%), Equine (86%).
Specificity/Sensitivity	Human OR51E2. BLAST analysis of the peptide immunogen showed no homology with other human proteins.
Immunogen	Synthetic 14 amino acid peptide from N-terminal extracellular domain of human PSGR.

Product Application Details

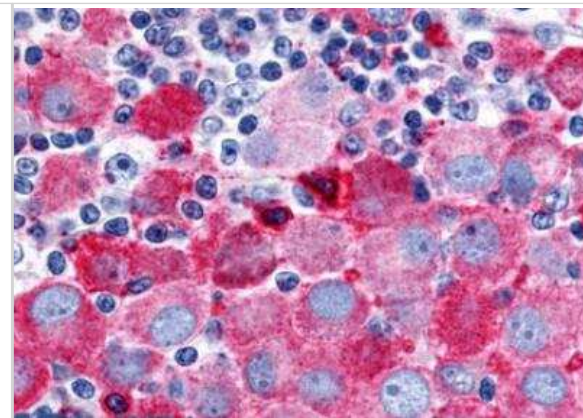
Applications	Immunohistochemistry, Immunohistochemistry-Paraffin
Recommended Dilutions	Immunohistochemistry, Immunohistochemistry-Paraffin 16 ug/ml

Images

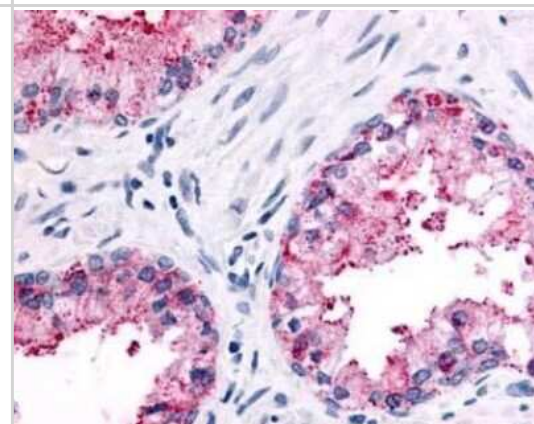
Immunohistochemistry: PSGR Antibody [NLS6332] - Expression of PSGR protein in normal prostate (N), prostatic intraepithelial neoplasia (PIN) and prostate cancer (PCa) by immunohistochemistry. Low (a and b) and high (c and d) magnification images of PSGR in N and adjacent PIN (a, c), and PIN and adjacent PCa (b, d) (original magnification x 10 and x 20 for low and high respectively). Image collected and cropped by CiteAb from the following publication (bmccancer.biomedcentral.com/articles/10.1186/s12885-015-1921-6), licensed under a CC-BY license.



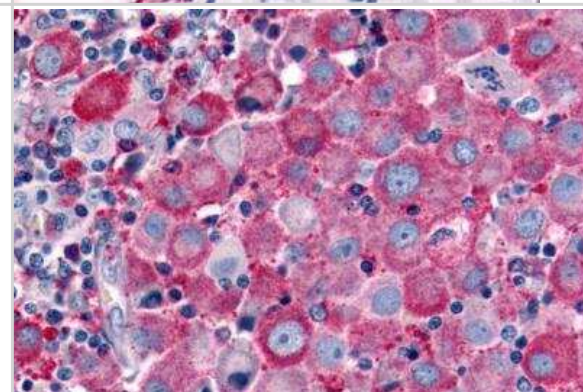
Immunohistochemistry-Paraffin: PSGR Antibody [NLS6332] - Human Skin, Melanoma tissue after heat-induced antigen retrieval.



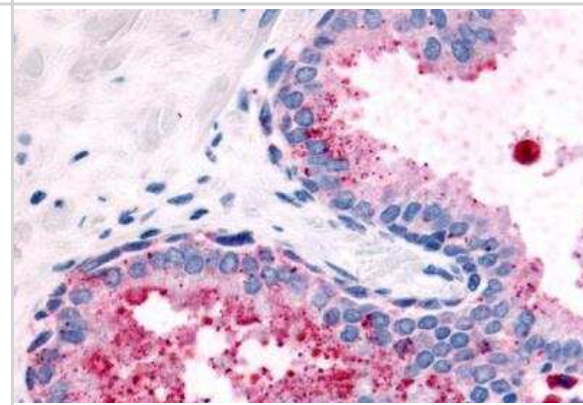
Immunohistochemistry-Paraffin: PSGR Antibody [NLS6332] - IHC staining of human prostate, epithelium.



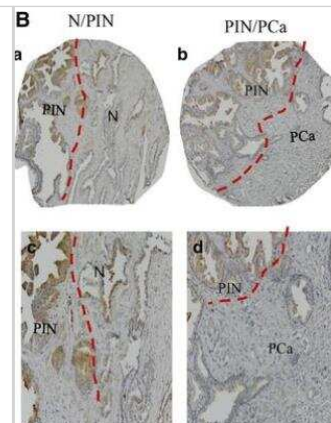
Immunohistochemistry-Paraffin: PSGR Antibody [NLS6332] - Skin, Malignant Melanoma



Immunohistochemistry-Paraffin: PSGR Antibody [NLS6332] - Prostate carcinoma



Immunohistochemistry: PSGR Antibody [NLS6332] - Expression of PSGR protein in normal prostate (N), prostatic intraepithelial neoplasia (PIN) and prostate cancer (PCa) by immunohistochemistry. Low (a and b) and high (c and d) magnification images of PSGR in N and adjacent PIN (a, c), and PIN and adjacent PCa (b, d) (original magnification x 10 and x 20 for low and high respectively). Image collected and cropped by CiteAb from the following publication (bmccancer.biomedcentral.com/articles/10.1186/s12885-015-1921-6), licensed under a CC-BY license.



Publications

Cao W, Li F, Yao J, Yu J. Prostate specific G protein coupled receptor is associated with prostate cancer prognosis and affects cancer cell proliferation and invasion. BMC Cancer. 2015-11-20 [PMID: 26582057] (IHC-P, Human)

Details:

PSGR antibody was used for IHC-P analysis of human prostate cancer tissue (benign prostatic tissue, high grade prostatic intraepithelial neoplasia, or prostatic adenocarcinoma) microarray sections. The IHC protocol implicated antigen retrieval with EDTA buffer pH 9.0 at 98C for 20 minutes, blocking of endogenous peroxidase with 3% hydrogen peroxide, use of primary at 1: 100 dilution with 1 hour RT incubation, detection using anti-rabbit biotin EnVision++System horseradish peroxidase-labeled polymer and DAB followed by counterstaining with Mayer's hematoxylin. PSGR staining was located in the cytoplasm and cell membranes, and a higher PSGR expression was found in PIN compared to normal tissues.



Novus Biologicals USA

10730 E. Briarwood Avenue
Centennial, CO 80112
USA
Phone: 303.730.1950
Toll Free: 1.888.506.6887
Fax: 303.730.1966
nb-customerservice@bio-techne.com

Bio-Techne Canada

21 Canmotor Ave
Toronto, ON M8Z 4E6
Canada
Phone: 905.827.6400
Toll Free: 855.668.8722
Fax: 905.827.6402
canada.inquires@bio-techne.com

Bio-Techne Ltd

19 Barton Lane
Abingdon Science Park
Abingdon, OX14 3NB, United Kingdom
Phone: (44) (0) 1235 529449
Free Phone: 0800 37 34 15
Fax: (44) (0) 1235 533420
info.EMEA@bio-techne.com

General Contact Information

www.novusbio.com
Technical Support: nb-technical@bio-techne.com
Orders: nb-customerservice@bio-techne.com
General: novus@novusbio.com

Limitations

This product is for research use only and is not approved for use in humans or in clinical diagnosis. Primary Antibodies are guaranteed for 1 year from date of receipt.

For more information on our 100% guarantee, please visit www.novusbio.com/guarantee

Earn gift cards/discounts by submitting a review: www.novusbio.com/reviews/submit/NLS6332

Earn gift cards/discounts by submitting a publication using this product:
www.novusbio.com/publications

