

Product Datasheet

GPER/GPR30 Antibody NLS4268

Unit Size: 0.05 ml

Store at 4C short term. Aliquot and store at -20C long term. Avoid freeze-thaw cycles.

www.novusbio.com



technical@novusbio.com

Publications: 1

Protocols, Publications, Related Products, Reviews, Research Tools and Images at:
www.novusbio.com/NLS4268

Updated 8/21/2017 v.20.1

Earn rewards for product
reviews and publications.

Submit a publication at www.novusbio.com/publications

Submit a review at www.novusbio.com/reviews/destination/NLS4268



NLS4268**GPER/GPR30 Antibody**

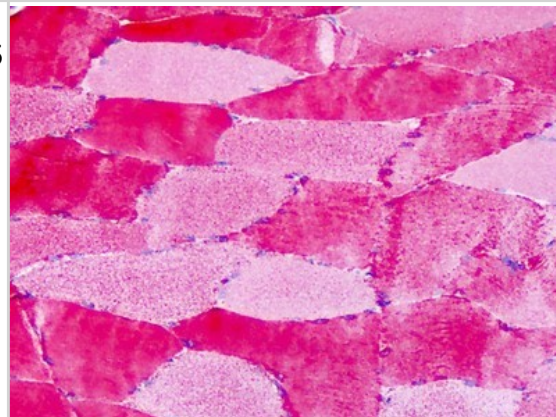
| Product Information | |
|----------------------------|--|
| Unit Size | 0.05 ml |
| Concentration | 1.0 mg/ml |
| Storage | Store at 4C short term. Aliquot and store at -20C long term. Avoid freeze-thaw cycles. |
| Clonality | Polyclonal |
| Preservative | 0.1% Sodium Azide |
| Isotype | IgG |
| Purity | Immunogen affinity purified |
| Buffer | PBS |

| Product Description | |
|--------------------------------|---|
| Host | Rabbit |
| Gene ID | 2852 |
| Gene Symbol | GPER |
| Species | Human |
| Reactivity Notes | Predicted cross-reactivity based on sequence identity: Marmoset (93%), Elephant (93%), Mouse (87%), Rat (87%), Hamster (87%), Panda (87%), Equine (87%), Opossum (87%), Platypus (87%), Canine (80%), Bovine (80%), Turkey (80%), Zebra finch (80%), Chicken (80%). |
| Specificity/Sensitivity | Human GPR30. BLAST analysis of the peptide immunogen showed no homology with other human proteins. |
| Immunogen | Synthetic 15 amino acid peptide from 2nd extracellular domain of human GPR30. |

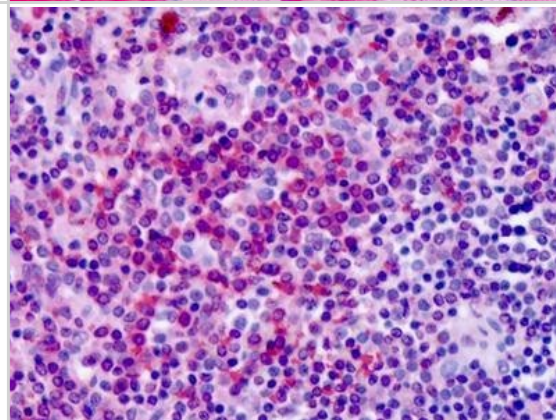
| Product Application Details | |
|------------------------------------|--|
| Applications | ELISA, Immunohistochemistry-Paraffin |
| Recommended Dilutions | ELISA 1:100 - 1:2000, Immunohistochemistry-Paraffin 1:10 - 1:500 |

Images

Immunohistochemistry-Paraffin: GPER/GPR30 Antibody [NLS4268] - Analysis of anti-GPR30 antibody with human skeletal muscle at dilution 5 - 7.5 ug/ml.



Immunohistochemistry-Paraffin: GPER/GPR30 Antibody [NLS4268] - Analysis of anti-GPR30 antibody with human, spleen.



Publications

Park II, Zhang Q, Liu V et al. 17 β -estradiol at low concentrations acts through distinct pathways in normal versus BPH-derived prostate stromal cells. *Endocrinology* :en.2008-1591. 2009 [PMID: 19608654]



Novus Biologicals USA

8100 Southpark Way, A-8
Littleton, CO 80120
USA
Phone: 303.730.1950
Toll Free: 1.888.506.6887
Fax: 303.730.1966
novus@novusbio.com

Novus Biologicals Canada

461 North Service Road West, Unit B37
Oakville, ON L6M 2V5
Canada
Phone: 905.827.6400
Toll Free: 855.668.8722
Fax: 905.827.6402
canada@novusbio.com

Novus Biologicals Europe

19 Barton Lane
Abingdon Science Park
Abingdon, OX14 3NB, United Kingdom
Phone: (44) (0) 1235 529449
Free Phone: 0800 37 34 15
Fax: (44) (0) 1235 533420
info@bio-techne.com

General Contact Information

www.novusbio.com
Technical Support: technical@novusbio.com
Orders: orders@novusbio.com
General: novus@novusbio.com

Products Related to NLS4268

| | |
|-------------------|--|
| HAF008 | Goat anti-Rabbit IgG Secondary Antibody [HRP (Horseradish Peroxidase)] |
| NB7160 | Goat anti-Rabbit IgG (H+L) Secondary Antibody [HRP] |
| NBP2-24891 | Rabbit IgG Isotype Control |
| H00002852-P01-2ug | Recombinant Human GPER/GPR30 Protein |

Limitations

This product is for research use only and is not approved for use in humans or in clinical diagnosis. Primary Antibodies are guaranteed for 1 year from date of receipt.

For more information on our 100% guarantee, please visit www.novusbio.com/guarantee

Earn gift cards/discounts by submitting a review: www.novusbio.com/reviews/submit/NLS4268

Earn gift cards/discounts by submitting a publication using this product:
www.novusbio.com/publications

