

# Product Datasheet

## Cysteinyl Leukotriene R2/CysLTR2 Antibody NLS3305

Unit Size: 0.05 ml

Store at 4C short term. Aliquot and store at -20C long term. Avoid freeze-thaw cycles.

[www.novusbio.com](http://www.novusbio.com)



[technical@novusbio.com](mailto:technical@novusbio.com)

Protocols, Publications, Related Products, Reviews, Research Tools and Images at:  
[www.novusbio.com/NLS3305](http://www.novusbio.com/NLS3305)

Updated 6/20/2021 v.20.1

Earn rewards for product  
reviews and publications.

Submit a publication at [www.novusbio.com/publications](http://www.novusbio.com/publications)

Submit a review at [www.novusbio.com/reviews/destination/NLS3305](http://www.novusbio.com/reviews/destination/NLS3305)

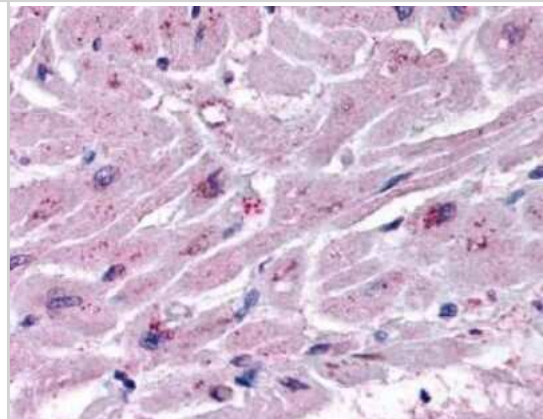


**NLS3305****Cysteinyl Leukotriene R2/CysLTR2 Antibody**

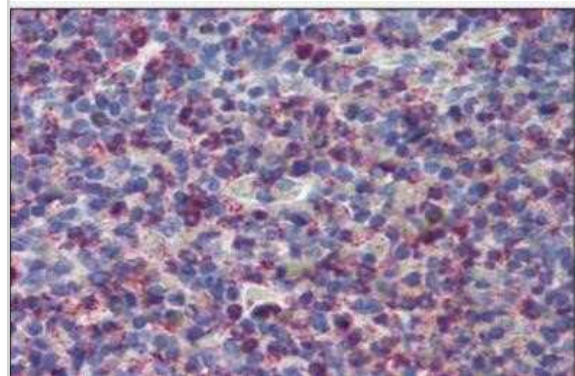
<b>Product Information</b>	
<b>Unit Size</b>	0.05 ml
<b>Concentration</b>	1.0 mg/ml
<b>Storage</b>	Store at 4C short term. Aliquot and store at -20C long term. Avoid freeze-thaw cycles.
<b>Clonality</b>	Polyclonal
<b>Preservative</b>	0.1% Sodium Azide
<b>Isotype</b>	IgG
<b>Purity</b>	Immunogen affinity purified
<b>Buffer</b>	PBS
<b>Product Description</b>	
<b>Host</b>	Rabbit
<b>Gene ID</b>	57105
<b>Gene Symbol</b>	CYSLTR2
<b>Species</b>	Human
<b>Reactivity Notes</b>	Predicted cross-reactivity based on sequence identity: Gorilla (100%), Gibbon (100%), Monkey (87%), Marmoset (87%).
<b>Specificity/Sensitivity</b>	Human CYSLTR2 / CYSLT2. BLAST analysis of the peptide immunogen showed no homology with other human proteins, except TLR4 (47%).
<b>Immunogen</b>	Synthetic 15 amino acid peptide from 2nd extracellular domain of human Cysteinyl Leukotriene R2/CysLTR2.
<b>Product Application Details</b>	
<b>Applications</b>	Immunohistochemistry, Immunohistochemistry-Paraffin
<b>Recommended Dilutions</b>	Immunohistochemistry, Immunohistochemistry-Paraffin 4 - 36 ug/ml

## Images

Immunohistochemistry-Paraffin: Cysteinyl Leukotriene R2/CysLTR2 Antibody [NLS3305] - IHC staining of human heart.



Immunohistochemistry-Paraffin: Cysteinyl Leukotriene R2/CysLTR2 Antibody [NLS3305] - IHC staining of human spleen.



## Procedures

### Immunohistochemistry Protocol for CysLT2 Antibody (NLS3305)

Immunohistochemistry Protocol for CysLT2 Antibody (NLS3305):

Immunohistochemistry

1. Prepare tissue with formalin fixation and by embedding it in paraffin wax.
2. Make 4-mm sections and place on pre-cleaned and charged microscope slides.
3. Heat in a tissue-drying oven for 45 minutes @ 60 degrees Celcius.
4. Deparaffinize the tissues by wash drying the slides in 3 changes of xylene 5 minutes each @ RT.
5. Rehydrate the tissues by washing the slides in 3 changes of 100% alcohol 3 minutes each @ RT.
6. Wash the slides in 2 changes of 95% alcohol 3 minutes each @ RT.
7. Wash the slides in 1 change of 80% alcohol 3 minutes @ RT.
8. Rinse the slides in gentle running distilled water 5 minutes @ RT.
9. Perform antigen retrieval by steaming the slides in 0.01M sodium citrate buffer (pH 6.0) @ 99-100 degrees Celcius for 20 minutes.
10. Remove the slides from the heat and let stand in buffer @ RT for 20 minutes.
11. Rinse the slides in 1X TBS-T for 1 minute @ RT.

**\*\*Do not allow the tissues to dry at any time during the staining procedure\*\***

12. Begin the immunostaining by applying a universal protein block 20 minutes @ RT.
13. Drain protein block from the slides and apply the diluted primary antibody 45 minutes @ RT.
14. Rinse the slide in 1X TBS-T 1 minute @ RT.
15. Apply a biotinylated anti-rabbit IgG (H+L) secondary 30 minutes @ RT.
16. Rinse the slide in 1X TBS-T 1 minute @ RT.
17. Apply an alkaline phosphatase streptavidin 30 minutes @ RT.
18. Rinse the slide in 1X TBS-T 1 minute @ RT.
19. Apply an alkaline phosphatase chromagen substrate 30 minutes @ RT.
20. Rinse the slide in distilled water 1 minute @ RT.

**\*\*This method should only be used if the chromagen substrate is alcohol insoluble (ie: Vector Red, DAB)\*\***

21. Dehydrate the tissue by washing the slides in 2 changes of 80% alcohol 1 minute each @ RT.
22. Wash the slides in 2 changes of 95% alcohol 1 minute each @ RT.
23. Wash the slides in 3 changes of 100% alcohol 1 minute each @ RT.
24. Wash the slides in 3 changes of xylene 1 minute each @ RT.
25. Apply cover slip.





### **Novus Biologicals USA**

10730 E. Briarwood Avenue  
Centennial, CO 80112  
USA  
Phone: 303.730.1950  
Toll Free: 1.888.506.6887  
Fax: 303.730.1966  
nb-customerservice@bio-techne.com

### **Bio-Techne Canada**

21 Canmotor Ave  
Toronto, ON M8Z 4E6  
Canada  
Phone: 905.827.6400  
Toll Free: 855.668.8722  
Fax: 905.827.6402  
canada.inquires@bio-techne.com

### **Bio-Techne Ltd**

19 Barton Lane  
Abingdon Science Park  
Abingdon, OX14 3NB, United Kingdom  
Phone: (44) (0) 1235 529449  
Free Phone: 0800 37 34 15  
Fax: (44) (0) 1235 533420  
info.EMEA@bio-techne.com

### **General Contact Information**

www.novusbio.com  
Technical Support: nb-technical@bio-  
techne.com  
Orders: nb-customerservice@bio-techne.com  
General: novus@novusbio.com

### **Limitations**

This product is for research use only and is not approved for use in humans or in clinical diagnosis. Primary Antibodies are guaranteed for 1 year from date of receipt.

For more information on our 100% guarantee, please visit [www.novusbio.com/guarantee](http://www.novusbio.com/guarantee)

Earn gift cards/discounts by submitting a review: [www.novusbio.com/reviews/submit/NLS3305](http://www.novusbio.com/reviews/submit/NLS3305)

Earn gift cards/discounts by submitting a publication using this product:  
[www.novusbio.com/publications](http://www.novusbio.com/publications)

