

# Product Datasheet

## Recombinant Human RBM11 His Protein NBP2-23444

Unit Size: 0.1 mg

Store at 4C short term. Aliquot and store at -20C long term. Avoid freeze-thaw cycles.

[www.novusbio.com](http://www.novusbio.com)



[technical@novusbio.com](mailto:technical@novusbio.com)

Protocols, Publications, Related Products, Reviews, Research Tools and Images at:  
[www.novusbio.com/NBP2-23444](http://www.novusbio.com/NBP2-23444)

Updated 10/23/2024 v.20.1

Earn rewards for product  
reviews and publications.

Submit a publication at [www.novusbio.com/publications](http://www.novusbio.com/publications)

Submit a review at [www.novusbio.com/reviews/destination/NBP2-23444](http://www.novusbio.com/reviews/destination/NBP2-23444)



**NBP2-23444**

## Recombinant Human RBM11 His Protein

**Product Information**

<b>Unit Size</b>	0.1 mg
<b>Concentration</b>	1 mg/ml
<b>Storage</b>	Store at 4C short term. Aliquot and store at -20C long term. Avoid freeze-thaw cycles.
<b>Preservative</b>	No Preservative
<b>Purity</b>	>85%, by SDS-PAGE
<b>Buffer</b>	20 mM Tris-HCl buffer (pH 8.0), 0.4M UREA, 10% glycerol
<b>Target Molecular Weight</b>	34.6 kDa

**Product Description**

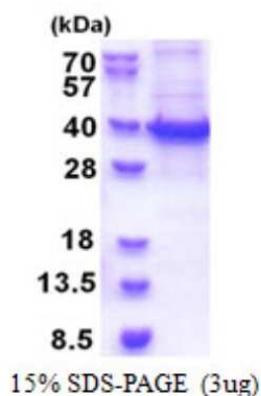
<b>Description</b>	<p>A denatured recombinant protein with a N-Terminal His-tag and corresponding to the amino acids 1-281 of Human RBM11</p> <p><b>Source:</b> <i>E.coli</i></p> <p><b>Amino Acid Sequence:</b> MGSSHHHHHH SSGLVPRGSH MGSMFPAQEE ADRTVFVGNL EARVREEILY ELFLQAGPLT KVTICKDREG KPKSFGFVCF KHPESVSYAI ALLNGIRLYG RPINVQYRFG SSRSSEPANQ SFESCVKINS HNYRNEEMLV GRSSFPMQYF PINNTSLPQE YFLFQKMQWH VYNPVLQLPY YEMTAPLPNS ASVSSSLNHV PDLEAGPSSY KWTHQQPSDS DLYQMTAPLP NSASVSSSLN HVPDLEAGPS SYKWTHQQPS DSDLYQMNKR KRQKQTSDSD SSTDNNRGNE CSQKFRKSKK KKRY</p>
<b>Gene ID</b>	54033
<b>Gene Symbol</b>	RBM11
<b>Species</b>	Human

**Product Application Details**

<b>Applications</b>	SDS-Page
<b>Recommended Dilutions</b>	SDS-Page
<b>Application Notes</b>	Denatured protein is most likely not the best option for functional studies. It is better suited for Western Blot (WB) or imaging assays.

**Images**

SDS-Page: RBM11 Protein [NBP2-23444]





### **Novus Biologicals USA**

10730 E. Briarwood Avenue  
Centennial, CO 80112  
USA  
Phone: 303.730.1950  
Toll Free: 1.888.506.6887  
Fax: 303.730.1966  
nb-customerservice@bio-techne.com

### **Bio-Techne Canada**

21 Canmotor Ave  
Toronto, ON M8Z 4E6  
Canada  
Phone: 905.827.6400  
Toll Free: 855.668.8722  
Fax: 905.827.6402  
canada.inquires@bio-techne.com

### **Bio-Techne Ltd**

19 Barton Lane  
Abingdon Science Park  
Abingdon, OX14 3NB, United Kingdom  
Phone: (44) (0) 1235 529449  
Free Phone: 0800 37 34 15  
Fax: (44) (0) 1235 533420  
info.EMEA@bio-techne.com

### **General Contact Information**

www.novusbio.com  
Technical Support: nb-technical@bio-techne.com  
Orders: nb-customerservice@bio-techne.com  
General: novus@novusbio.com

### **Products Related to NBP2-23444**

---

NB100-56104	Bcl-xL Antibody
NBP2-93777-0.1ml	RBM11 Antibody - Azide and BSA Free
NBP2-20324	SF2 Antibody
NBP1-59157	Claudin-8 Antibody

---

### **Limitations**

This product is for research use only and is not approved for use in humans or in clinical diagnosis. Peptides and proteins are guaranteed for 3 months from date of receipt.

For more information on our 100% guarantee, please visit [www.novusbio.com/guarantee](http://www.novusbio.com/guarantee)

Earn gift cards/discounts by submitting a review: [www.novusbio.com/reviews/submit/NBP2-23444](http://www.novusbio.com/reviews/submit/NBP2-23444)

Earn gift cards/discounts by submitting a publication using this product:  
[www.novusbio.com/publications](http://www.novusbio.com/publications)

