

Product Datasheet

Recombinant Human Protein phosphatase 1F His Protein NBP2-23384

Unit Size: 0.1 mg

Store at 4C short term. Aliquot and store at -20C long term. Avoid freeze-thaw cycles.

www.novusbio.com



technical@novusbio.com

Protocols, Publications, Related Products, Reviews, Research Tools and Images at:
www.novusbio.com/NBP2-23384

Updated 10/23/2024 v.20.1

Earn rewards for product
reviews and publications.

Submit a publication at www.novusbio.com/publications

Submit a review at www.novusbio.com/reviews/destination/NBP2-23384



NBP2-23384**Recombinant Human Protein phosphatase 1F His Protein****Product Information**

Unit Size	0.1 mg
Concentration	1 mg/ml
Storage	Store at 4C short term. Aliquot and store at -20C long term. Avoid freeze-thaw cycles.
Preservative	No Preservative
Purity	>90%, by SDS-PAGE
Buffer	20 mM Tris-HCl buffer (pH 8.0), 0.15 M NaCl, 20% glycerol, 1 mM DTT
Target Molecular Weight	52.2 kDa

Product Description

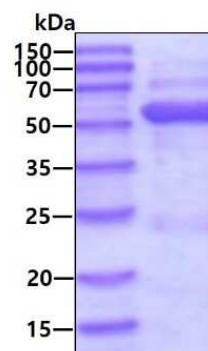
Description	<p>A recombinant protein with a N-Terminal His-tag and corresponding to the amino acids 1-454 of Human Protein phosphatase 1F</p> <p>Source: <i>E.coli</i></p> <p>Amino Acid Sequence: MGSSHHHHHH SSGLVPRGSH MGSMSSGAPQ KSSPMASGAE ETPGFLDTLL QDFPALLNPE DLPWKAPGT VLSQEEVEGE LAELAMGFLG SRKAPPPLAA ALAHEAVSQL LQTDLSEFRK LPREEEEEEE DDDEEEKAPV TLLDAQSLAQ SFFNRLWEVA GQWQKQVPLA ARASQRQWLVSIIHAIRNTRR KMEDRHVSLP SFNQLFGLSD PVNRAYFAVF DGHGGVDAAR YAAVHVHTNA ARQPELPTDP EGALREAFRR TDQMFLRKAK RERLQSGTTG VICALIAGATL HVAWLGDSQV ILVQQGQVVK LMEPHRPERQ DEKARIEALG GFVSHMDCWR VNGTLAVSRA IGDVFQKPYV SGEADAASRA LTGSEDYLLL ACDGFFDVVP HQEVVGLVQS HLTRQQGSGL RVAEELVAAA RERGSHDNIT VMVVFLRDPQ ELLEGGNQGE GDPQAEGRRRQ DLPSSLPEPE TQAPPRS</p>
Gene ID	9647
Gene Symbol	PPM1F
Species	Human

Product Application Details

Applications	SDS-Page
Recommended Dilutions	SDS-Page

Images

SDS-Page: Recombinant Human Protein phosphatase 1F His Protein [NBP2-23384] - 3ug by SDS-PAGE under reducing condition and visualized by coomassie blue stain.





Novus Biologicals USA

10730 E. Briarwood Avenue
Centennial, CO 80112
USA
Phone: 303.730.1950
Toll Free: 1.888.506.6887
Fax: 303.730.1966
nb-customerservice@bio-techne.com

Bio-Techne Canada

21 Canmotor Ave
Toronto, ON M8Z 4E6
Canada
Phone: 905.827.6400
Toll Free: 855.668.8722
Fax: 905.827.6402
canada.inquires@bio-techne.com

Bio-Techne Ltd

19 Barton Lane
Abingdon Science Park
Abingdon, OX14 3NB, United Kingdom
Phone: (44) (0) 1235 529449
Free Phone: 0800 37 34 15
Fax: (44) (0) 1235 533420
info.EMEA@bio-techne.com

General Contact Information

www.novusbio.com
Technical Support: nb-technical@bio-techne.com
Orders: nb-customerservice@bio-techne.com
General: novus@novusbio.com

Products Related to NBP2-23384

NBP1-88207PEP	Protein phosphatase 1F Recombinant Protein Antigen
NBP2-59690-100ug	Rhodopsin Antibody (4D2)
NBP1-88207	Protein phosphatase 1F Antibody
MAB41051	Patched 1/PTCH Antibody (413220) [Unconjugated] - (First Extracellular Loop)

Limitations

This product is for research use only and is not approved for use in humans or in clinical diagnosis. Peptides and proteins are guaranteed for 3 months from date of receipt.

For more information on our 100% guarantee, please visit www.novusbio.com/guarantee

Earn gift cards/discounts by submitting a review: www.novusbio.com/reviews/submit/NBP2-23384

Earn gift cards/discounts by submitting a publication using this product:
www.novusbio.com/publications



