

# Product Datasheet

## Recombinant Human PHOSPHO1 His Protein NBP2-23326

Unit Size: 0.1 mg

Store at 4C short term. Aliquot and store at -20C long term. Avoid freeze-thaw cycles.

[www.novusbio.com](http://www.novusbio.com)



[technical@novusbio.com](mailto:technical@novusbio.com)

Protocols, Publications, Related Products, Reviews, Research Tools and Images at:  
[www.novusbio.com/NBP2-23326](http://www.novusbio.com/NBP2-23326)

Updated 10/23/2024 v.20.1

Earn rewards for product  
reviews and publications.

Submit a publication at [www.novusbio.com/publications](http://www.novusbio.com/publications)

Submit a review at [www.novusbio.com/reviews/destination/NBP2-23326](http://www.novusbio.com/reviews/destination/NBP2-23326)



**NBP2-23326**

Recombinant Human PHOSPHO1 His Protein

**Product Information**

<b>Unit Size</b>	0.1 mg
<b>Concentration</b>	0.5 mg/ml
<b>Storage</b>	Store at 4C short term. Aliquot and store at -20C long term. Avoid freeze-thaw cycles.
<b>Preservative</b>	No Preservative
<b>Purity</b>	>95%, by SDS-PAGE
<b>Buffer</b>	PBS (pH 7.4), 50% glycerol
<b>Target Molecular Weight</b>	32.2 kDa

**Product Description**

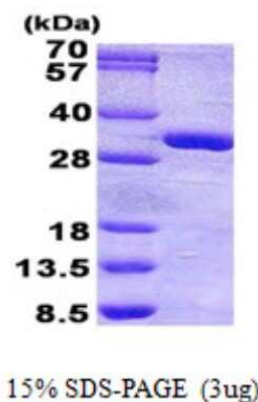
<b>Description</b>	<p>A recombinant protein with a N-Terminal His-tag and corresponding to the amino acids 1-267 of Human PHOSPHO1</p> <p><b>Source:</b> <i>E.coli</i></p> <p><b>Amino Acid Sequence:</b> MGSSHHHHHH SSGLVPRGSH MGSMSGCFP VSGLRCLSRD GRMAAQGAPR FLLTFDFDET IVDENSDDSI VRAAPGQRLP ESLRATYREG FYNEYMQRVF KYLGEQGVPR RDLSAIYEAI PLSPGMSDLL QFVAKQGACF EVILISDANT FGVESSLRRA GHHSLFRRIL SNPSGPDARG LLALRPFHTH SCARCPANMC KHKVLS DYLR ERAHDGVHFE RLFYVGDGAN DFCPMGLLAG GDVAFPRRGY PMHRLIQEAQ KAEPSSFRAS VVPWETAADV RLHLQQVLKS C</p>
<b>Gene ID</b>	162466
<b>Gene Symbol</b>	PHOSPHO1
<b>Species</b>	Human

**Product Application Details**

<b>Applications</b>	SDS-Page
<b>Recommended Dilutions</b>	SDS-Page

**Images**

SDS-Page: PHOSPHO1 Protein [NBP2-23326]





### **Novus Biologicals USA**

10730 E. Briarwood Avenue  
Centennial, CO 80112  
USA  
Phone: 303.730.1950  
Toll Free: 1.888.506.6887  
Fax: 303.730.1966  
nb-customerservice@bio-techne.com

### **Bio-Techne Canada**

21 Canmotor Ave  
Toronto, ON M8Z 4E6  
Canada  
Phone: 905.827.6400  
Toll Free: 855.668.8722  
Fax: 905.827.6402  
canada.inquires@bio-techne.com

### **Bio-Techne Ltd**

19 Barton Lane  
Abingdon Science Park  
Abingdon, OX14 3NB, United Kingdom  
Phone: (44) (0) 1235 529449  
Free Phone: 0800 37 34 15  
Fax: (44) (0) 1235 533420  
info.EMEA@bio-techne.com

### **General Contact Information**

[www.novusbio.com](http://www.novusbio.com)  
Technical Support: nb-technical@bio-techne.com  
Orders: nb-customerservice@bio-techne.com  
General: novus@novusbio.com

### **Products Related to NBP2-23326**

---

NBP2-68826PEP	PHOSPHO1 Recombinant Protein Antigen
AF2910	Alkaline Phosphatase/ALPL Antibody [Unconjugated]
H00162466-M04	PHOSPHO1 Antibody (4B2)
NB100-1793	Pancreatic Polypeptide/PP Antibody

---

### **Limitations**

This product is for research use only and is not approved for use in humans or in clinical diagnosis. Peptides and proteins are guaranteed for 3 months from date of receipt.

For more information on our 100% guarantee, please visit [www.novusbio.com/guarantee](http://www.novusbio.com/guarantee)

Earn gift cards/discounts by submitting a review: [www.novusbio.com/reviews/submit/NBP2-23326](http://www.novusbio.com/reviews/submit/NBP2-23326)

Earn gift cards/discounts by submitting a publication using this product:  
[www.novusbio.com/publications](http://www.novusbio.com/publications)

