

Product Datasheet

Recombinant Human MLF1 Interacting Protein His Protein NBP2-23247

Unit Size: 0.1 mg

Store at 4C short term. Aliquot and store at -20C long term. Avoid freeze-thaw cycles.

www.novusbio.com



technical@novusbio.com

Protocols, Publications, Related Products, Reviews, Research Tools and Images at:
www.novusbio.com/NBP2-23247

Updated 10/23/2024 v.20.1

Earn rewards for product
reviews and publications.

Submit a publication at www.novusbio.com/publications

Submit a review at www.novusbio.com/reviews/destination/NBP2-23247



NBP2-23247**Recombinant Human MLF1 Interacting Protein His Protein****Product Information**

Unit Size	0.1 mg
Concentration	1 mg/ml
Storage	Store at 4C short term. Aliquot and store at -20C long term. Avoid freeze-thaw cycles.
Preservative	No Preservative
Purity	>80%, by SDS-PAGE
Buffer	20 mM Tris-HCl buffer (pH8.0), 10% glycerol, 0.4M UREA
Target Molecular Weight	33.7 kDa

Product Description

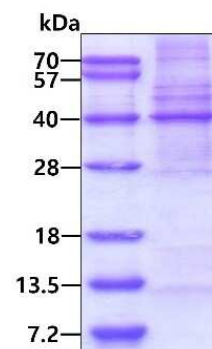
Description	<p>A denatured recombinant protein with a N-Terminal His-tag and corresponding to the amino acids 147-418 of Human MLF1 Interacting Protein</p> <p>Source: <i>E.coli</i></p> <p>Amino Acid Sequence: MGSSHHHHHH SSGLVPRGSH MGSTRRKVKS AEKISTQRHE VIRTASSEL SEKPAESVTS KKTGPLSAQP SVEKENLAIE SQSKTQKKGK ISHDKRKKSR SKAIGSDTSD IVHIWCPEGM KTS DIKELNI VLPEFEKTHL EHQQRIESKV CKAATFYV NVKEQFIKML KESQMLTNLK RKNAMISDI EKKRQRMIEV QDELLRLEPQ LKQLQTKYDE LKERKSSLRN AAYFLSNLKQ LYQDYSVDQA QEPNVKETVD SSSLPALLFK ARTLLGAESH LRNINHQLEK LLDQG</p>
Gene ID	79682
Gene Symbol	CENPU
Species	Human

Product Application Details

Applications	SDS-Page
Recommended Dilutions	SDS-Page
Application Notes	Denatured protein is most likely not the best option for functional studies. It is better suited for Western Blot (WB) or imaging assays.

Images

SDS-Page: Recombinant Human MLF1 Interacting Protein His Protein [NBP2-23247] - 3ug by SDS-PAGE under reducing condition and visualized by coomassie blue stain.





Novus Biologicals USA

10730 E. Briarwood Avenue
Centennial, CO 80112
USA
Phone: 303.730.1950
Toll Free: 1.888.506.6887
Fax: 303.730.1966
nb-customerservice@bio-techne.com

Bio-Techne Canada

21 Canmotor Ave
Toronto, ON M8Z 4E6
Canada
Phone: 905.827.6400
Toll Free: 855.668.8722
Fax: 905.827.6402
canada.inquires@bio-techne.com

Bio-Techne Ltd

19 Barton Lane
Abingdon Science Park
Abingdon, OX14 3NB, United Kingdom
Phone: (44) (0) 1235 529449
Free Phone: 0800 37 34 15
Fax: (44) (0) 1235 533420
info.EMEA@bio-techne.com

General Contact Information

www.novusbio.com
Technical Support: nb-technical@bio-techne.com
Orders: nb-customerservice@bio-techne.com
General: novus@novusbio.com

Products Related to NBP2-23247

NBP1-85689PEP	MLF1 Interacting Protein Recombinant Protein Antigen
MAB1259	Nestin Antibody (196908) [Unconjugated]
NBP1-77938	MLF1 Interacting Protein [p Thr78] Antibody
NB100-338	NDC80 Antibody (9G3.23)

Limitations

This product is for research use only and is not approved for use in humans or in clinical diagnosis. Peptides and proteins are guaranteed for 3 months from date of receipt.

For more information on our 100% guarantee, please visit www.novusbio.com/guarantee

Earn gift cards/discounts by submitting a review: www.novusbio.com/reviews/submit/NBP2-23247

Earn gift cards/discounts by submitting a publication using this product:
www.novusbio.com/publications

