

Product Datasheet

CREB Antibody NBP2-22516

Unit Size: 100 ug

Store at -20C. Avoid freeze-thaw cycles.

www.novusbio.com



technical@novusbio.com

Protocols, Publications, Related Products, Reviews, Research Tools and Images at:
www.novusbio.com/NBP2-22516

Updated 10/23/2024 v.20.1

Earn rewards for product
reviews and publications.

Submit a publication at www.novusbio.com/publications

Submit a review at www.novusbio.com/reviews/destination/NBP2-22516



NBP2-22516**CREB Antibody**

Product Information	
Unit Size	100 ug
Concentration	1 mg/ml
Storage	Store at -20C. Avoid freeze-thaw cycles.
Clonality	Polyclonal
Preservative	0.05% Sodium Azide
Isotype	IgG
Purity	Immunogen affinity purified
Buffer	PBS with 1 mg/ml BSA

Product Description	
Host	Rabbit
Gene ID	1385
Gene Symbol	CREB1
Species	Human, Mouse, Rat
Immunogen	Synthetic peptide corresponding to residues K(123) R R E I L S R R P S Y R K (136) of human CREB.

Product Application Details	
Applications	Western Blot, Immunocytochemistry/ Immunofluorescence, Immunohistochemistry, Immunohistochemistry-Paraffin, Chromatin Immunoprecipitation (ChIP)
Recommended Dilutions	Western Blot 2 ug/ml, Immunohistochemistry 1:20 - 1:200, Immunocytochemistry/ Immunofluorescence 1:50 - 1:500, Immunohistochemistry-Paraffin 1:20 - 1:200, Chromatin Immunoprecipitation (ChIP) 1-3 ul
Application Notes	WB: Detects an approx. 43 kDa protein representing CREB from GH4 cell extract.

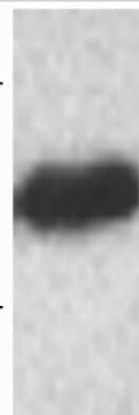
Images

Western Blot: CREB Antibody [NBP2-22516] - Analysis of GH4 cell extract.

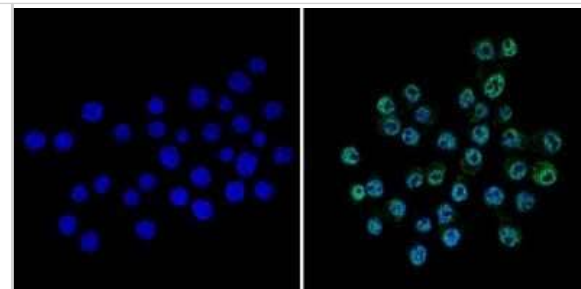
Fig. 1

50 kDa-

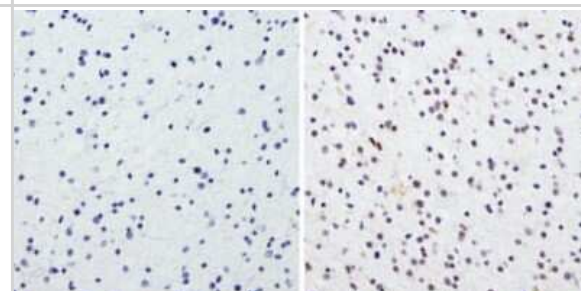
35 kDa-



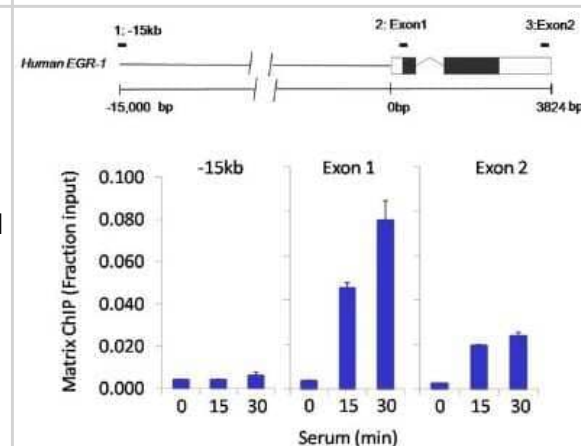
Immunocytochemistry/Immunofluorescence: CREB Antibody [NBP2-22516] - Analysis of CREB (green) showing staining in the nucleus of Neuro-2a cells (right) compared to a negative control without primary antibody (left).



Immunohistochemistry-Paraffin: CREB Antibody [NBP2-22516] - Analysis showing staining in the nucleus of human glioma (right) compared to a negative control without primary antibody (left).



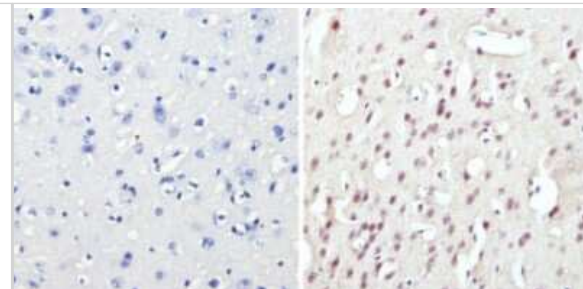
Chromatin Immunoprecipitation: CREB Antibody [NBP2-22516] - Analysis performed using cross-linked chromatin from colon carcinoma cells treated with serum. IP was performed using a multiplex microplate Matrix ChIP assay of a CREB polyclonal antibody. Chromatin aliquots from cells were used per ChIP pull-down. Quantitative PCR data one in quadruplicate using 1ul of eluted DNA in 2ul SYBR real-time PCR reactions containing primers to amplify -15kb upstream of Egr1 or exon-1 or exon-2 of Egr1. Quantitation of immunoprecipitated chromatin is presented as signal relative to the total amount of input chromatin. Results represent the mean \pm SEM. A schematic representation of the Egr-1 locus is shown; xes represent exons (black boxes = translated regions, white boxes = untranslated regions), the zigzag line represents an intron, and the straight line represents upstream sequence. Regions amplified by Egr-1 primers are represented by black bars. Data courtesy of the Innovators Program.



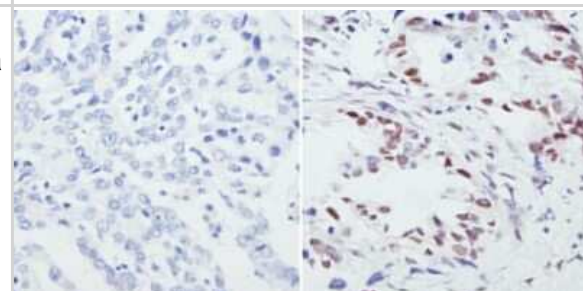
Immunocytochemistry/Immunofluorescence: CREB Antibody [NBP2-22516] - Analysis of CREB (green) showing staining in the nucleus of SK-N-MC cells (right) compared to a negative control without primary antibody (left).



Immunohistochemistry-Paraffin: CREB Antibody [NBP2-22516] - Analysis showing staining in the nucleus of mouse brain tissue (right) compared to a negative control without primary antibody (left).



Immunohistochemistry-Paraffin: CREB Antibody [NBP2-22516] - Analysis showing staining in the nucleus of human lung adenocarcinoma (right) compared to a negative control without primary antibody (left).





Novus Biologicals USA

10730 E. Briarwood Avenue
Centennial, CO 80112
USA
Phone: 303.730.1950
Toll Free: 1.888.506.6887
Fax: 303.730.1966
nb-customerservice@bio-techne.com

Bio-Techne Canada

21 Canmotor Ave
Toronto, ON M8Z 4E6
Canada
Phone: 905.827.6400
Toll Free: 855.668.8722
Fax: 905.827.6402
canada.inquires@bio-techne.com

Bio-Techne Ltd

19 Barton Lane
Abingdon Science Park
Abingdon, OX14 3NB, United Kingdom
Phone: (44) (0) 1235 529449
Free Phone: 0800 37 34 15
Fax: (44) (0) 1235 533420
info.EMEA@bio-techne.com

General Contact Information

www.novusbio.com
Technical Support: nb-technical@bio-techne.com
Orders: nb-customerservice@bio-techne.com
General: novus@novusbio.com

Products Related to NBP2-22516

HAF008	Goat anti-Rabbit IgG Secondary Antibody [HRP]
NB7160	Goat anti-Rabbit IgG (H+L) Secondary Antibody [HRP]
NBP2-24891	Rabbit IgG Isotype Control
H00001385-P01-10ug	Recombinant Human CREB GST (N-Term) Protein

Limitations

This product is for research use only and is not approved for use in humans or in clinical diagnosis. Primary Antibodies are guaranteed for 1 year from date of receipt.

For more information on our 100% guarantee, please visit www.novusbio.com/guarantee

Earn gift cards/discounts by submitting a review: www.novusbio.com/reviews/submit/NBP2-22516

Earn gift cards/discounts by submitting a publication using this product:
www.novusbio.com/publications

