

Product Datasheet

RELM beta Antibody NBP2-22446

Unit Size: 100uL

Store at -20C. Avoid freeze-thaw cycles.

www.novusbio.com



technical@novusbio.com

Protocols, Publications, Related Products, Reviews, Research Tools and Images at:
www.novusbio.com/NBP2-22446

Updated 12/26/2023 v.20.1

Earn rewards for product
reviews and publications.

Submit a publication at www.novusbio.com/publications

Submit a review at www.novusbio.com/reviews/destination/NBP2-22446



NBP2-22446

RELM beta Antibody

Product Information

| | |
|----------------------|------------------------------------------------------------------------------------------------------------------|
| Unit Size | 100uL |
| Concentration | Concentrations vary lot to lot. See vial label for concentration. If unlisted please contact technical services. |
| Storage | Store at -20C. Avoid freeze-thaw cycles. |
| Clonality | Polyclonal |
| Preservative | 0.05% Sodium Azide |
| Isotype | IgG |
| Purity | Ammonium sulfate precipitation |
| Buffer | PBS |

Product Description

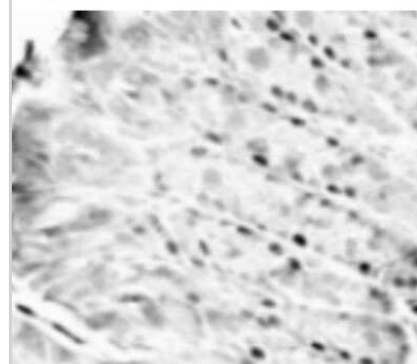
| | |
|--------------------|--------------------------------------------------------------------|
| Host | Rabbit |
| Gene ID | 84666 |
| Gene Symbol | RETNLB |
| Species | Mouse |
| Immunogen | Full-length, native folded and active recombinant mouse RELM beta. |

Product Application Details

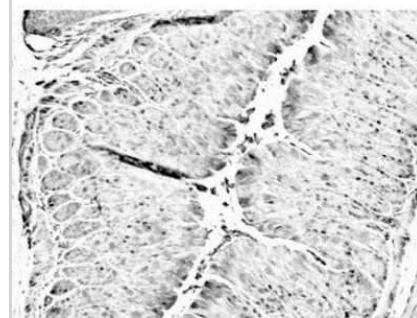
| | |
|------------------------------|---------------------------------------------------------------------------------------------|
| Applications | Western Blot, Immunohistochemistry, Immunohistochemistry-Paraffin |
| Recommended Dilutions | Western Blot 1:1000, Immunohistochemistry 1:10 - 1:500, Immunohistochemistry-Paraffin 1:100 |

Images

Immunohistochemistry: RELM beta Antibody [NBP2-22446] - Staining of RELM beta in mouse colon histological sections.

Fig. 1

Immunohistochemistry-Paraffin: RELM beta Antibody [NBP2-22446] - Staining of RELM beta in mouse colon histological sections.

Fig. 2



Novus Biologicals USA

10730 E. Briarwood Avenue
Centennial, CO 80112
USA

Phone: 303.730.1950

Toll Free: 1.888.506.6887

Fax: 303.730.1966

nb-customerservice@bio-techne.com

Bio-Techne Canada

21 Canmotor Ave
Toronto, ON M8Z 4E6
Canada

Phone: 905.827.6400

Toll Free: 855.668.8722

Fax: 905.827.6402

canada.inquires@bio-techne.com

Bio-Techne Ltd

19 Barton Lane
Abingdon Science Park
Abingdon, OX14 3NB, United Kingdom

Phone: (44) (0) 1235 529449

Free Phone: 0800 37 34 15

Fax: (44) (0) 1235 533420

info.EMEA@bio-techne.com

General Contact Information

www.novusbio.com

Technical Support: nb-technical@bio-techne.com

Orders: nb-customerservice@bio-techne.com

General: novus@novusbio.com

Limitations

This product is for research use only and is not approved for use in humans or in clinical diagnosis. Primary Antibodies are guaranteed for 1 year from date of receipt.

For more information on our 100% guarantee, please visit www.novusbio.com/guarantee

Earn gift cards/discounts by submitting a review: www.novusbio.com/reviews/submit/NBP2-22446

Earn gift cards/discounts by submitting a publication using this product:

www.novusbio.com/publications

