

Product Datasheet

Lambda Light Chain Antibody (ICO-106) NBP2-22385

Unit Size: 0.1 mg

Store at 4C.

www.novusbio.com



technical@novusbio.com

Protocols, Publications, Related Products, Reviews, Research Tools and Images at:
www.novusbio.com/NBP2-22385

Updated 4/29/2021 v.20.1

Earn rewards for product
reviews and publications.

Submit a publication at www.novusbio.com/publications

Submit a review at www.novusbio.com/reviews/destination/NBP2-22385



NBP2-22385

Lambda Light Chain Antibody (ICO-106)

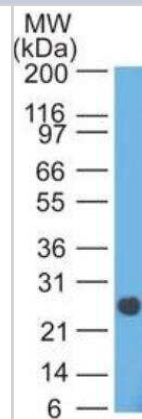
Product Information	
Unit Size	0.1 mg
Concentration	0.2 mg/ml
Storage	Store at 4C.
Clonality	Monoclonal
Clone	ICO-106
Preservative	0.05% Sodium Azide
Isotype	IgG2a Kappa
Purity	Protein A purified
Buffer	10 mM PBS with 0.05% BSA
Target Molecular Weight	22.5 kDa

Product Description	
Host	Mouse
Gene ID	3537
Gene Symbol	IGLC1
Species	Human
Marker	B-Cell Marker
Specificity/Sensitivity	This MAb is specific to lambda light chain of immunoglobulin and shows no cross-reaction with lambda light chain or any of the five heavy chains. In mammals, the two light chains in an antibody are always identical, with only one type of light chain, kappa or lambda. The ratio of Kappa to Lambda is 70:30. However, with the occurrence of multiple myeloma or other B-cell malignancies this ratio is disturbed. Antibody to the lambda light chain is reportedly useful in the identification of leukemias, plasmacytomas, and certain non-Hodgkin's lymphomas. Demonstration of clonality in lymphoid infiltrates indicates that the infiltrate is malignant.
Immunogen	Purified human IgG myeloma proteins covalently coupled to polyaminostyren microbeads were used as the immunogen for the HP6054 antibody.

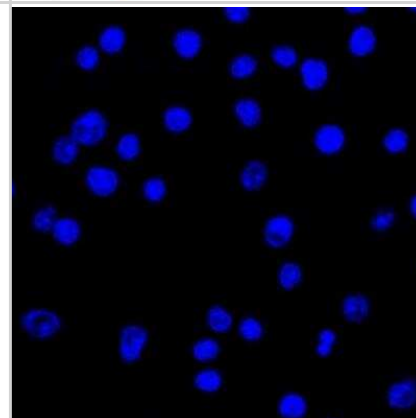
Product Application Details	
Applications	Western Blot, ELISA, Flow Cytometry, Immunocytochemistry/ Immunofluorescence, Immunohistochemistry, Immunohistochemistry-Frozen, Immunohistochemistry-Paraffin, Immunoprecipitation
Recommended Dilutions	Western Blot 0.5-1ug/ml, Flow Cytometry 0.5-1ug/million cells, ELISA 1-5ug/ml for coating, Immunohistochemistry, Immunocytochemistry/ Immunofluorescence 1-2ug/ml, Immunoprecipitation 0.5-1ug/500ug protein lysate, Immunohistochemistry-Paraffin 0.5-1ug/ml, Immunohistochemistry-Frozen 0.5-1ug/ml
Application Notes	Human Chromosome Location: 22q11.22 Immunohistochemistry-Frozen application reported in literature. Formalin fixed paraffin embedded tissue sections require high temperature antigen unmasking with 10 mM citrate buffer, pH 6.0 prior to immunostaining. The Lambda HP6054 antibody is useful for the identification of immunoglobulins in leukemias, plasmacytomas and some non-Hodgkins lymphomas. The 7mL size is a pre-diluted size and no additional dilutions are required before using this item for the intended application.

Images

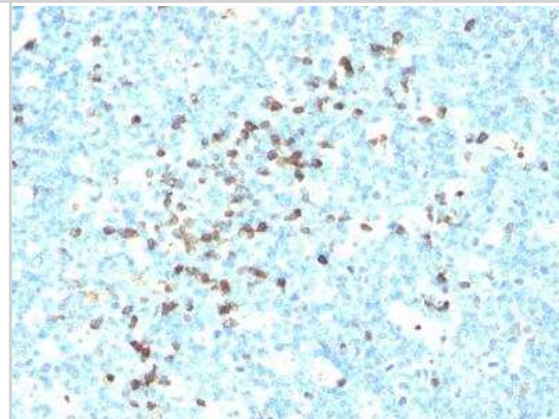
Western Blot: Lambda Light Chain Antibody (HP6054) [NBP2-22385] - Analysis of Lambda in human intestine using Lambda HP6054 antibody at 2 ug/ml, HRP secondary and ECL substrate.



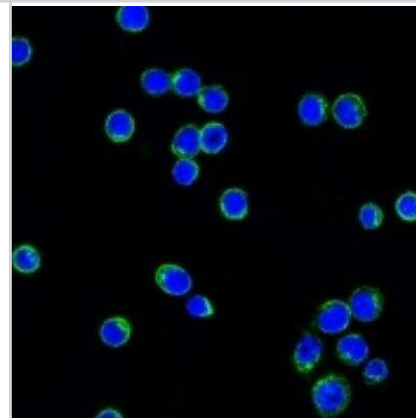
Immunocytochemistry/Immunofluorescence: Lambda Light Chain Antibody (HP6054) [NBP2-22385] - Confocal Immunofluorescent analysis of Ramos cells using AF488-labeled isotype control Monoclonal Antibody (IgG2a) (Green) DAPI was used to stain the cell nuclei (blue)/ (Negative control)



Immunohistochemistry-Paraffin: Lambda Light Chain Antibody (HP6054) [NBP2-22385] - Formalin-paraffin human tonsil stained with Lambda Light Chain Ab (LcN-2). Note cell membrane & cytoplasmic staining.



Immunocytochemistry/Immunofluorescence: Lambda Light Chain Antibody (HP6054) [NBP2-22385] - Confocal immunofluorescent analysis of Ramos cells using Af488-labeled Lambda Light Chain Monoclonal Antibody (LcN-2) (Green). DAPI was used to stain the cell nuclei (blue).





Novus Biologicals USA

10730 E. Briarwood Avenue
Centennial, CO 80112
USA
Phone: 303.730.1950
Toll Free: 1.888.506.6887
Fax: 303.730.1966
nb-customerservice@bio-techne.com

Bio-Techne Canada

21 Canmotor Ave
Toronto, ON M8Z 4E6
Canada
Phone: 905.827.6400
Toll Free: 855.668.8722
Fax: 905.827.6402
canada.inquires@bio-techne.com

Bio-Techne Ltd

19 Barton Lane
Abingdon Science Park
Abingdon, OX14 3NB, United Kingdom
Phone: (44) (0) 1235 529449
Free Phone: 0800 37 34 15
Fax: (44) (0) 1235 533420
info.EMEA@bio-techne.com

General Contact Information

www.novusbio.com
Technical Support: nb-technical@bio-techne.com
Orders: nb-customerservice@bio-techne.com
General: novus@novusbio.com

Limitations

This product is for research use only and is not approved for use in humans or in clinical diagnosis. Primary Antibodies are guaranteed for 1 year from date of receipt.

For more information on our 100% guarantee, please visit www.novusbio.com/guarantee

Earn gift cards/discounts by submitting a review: www.novusbio.com/reviews/submit/NBP2-22385

Earn gift cards/discounts by submitting a publication using this product:
www.novusbio.com/publications

