

# Product Datasheet

## TSLPR/CRLF2 Antibody NBP2-22384

Unit Size: 0.1 mg

Store at 4C short term. Aliquot and store at -20C long term. Avoid freeze-thaw cycles.

[www.novusbio.com](http://www.novusbio.com)



[technical@novusbio.com](mailto:technical@novusbio.com)

Protocols, Publications, Related Products, Reviews, Research Tools and Images at:  
[www.novusbio.com/NBP2-22384](http://www.novusbio.com/NBP2-22384)

Updated 10/23/2024 v.20.1

Earn rewards for product  
reviews and publications.

Submit a publication at [www.novusbio.com/publications](http://www.novusbio.com/publications)

Submit a review at [www.novusbio.com/reviews/destination/NBP2-22384](http://www.novusbio.com/reviews/destination/NBP2-22384)



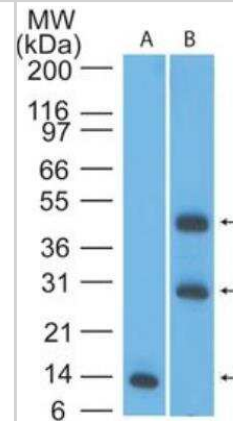
**NBP2-22384****TSLPR/CRLF2 Antibody**

<b>Product Information</b>	
<b>Unit Size</b>	0.1 mg
<b>Concentration</b>	Please see the vial label for concentration. If unlisted please contact technical services.
<b>Storage</b>	Store at 4C short term. Aliquot and store at -20C long term. Avoid freeze-thaw cycles.
<b>Clonality</b>	Polyclonal
<b>Preservative</b>	0.05% Sodium Azide
<b>Isotype</b>	IgG2b Kappa
<b>Purity</b>	Protein G purified
<b>Buffer</b>	0.2 ml PBS and 0.05% BSA
<b>Product Description</b>	
<b>Host</b>	Mouse
<b>Gene ID</b>	64109
<b>Gene Symbol</b>	CRLF2
<b>Species</b>	Human
<b>Immunogen</b>	Amino acids 119-231 of human TSLPR protein were used as the immunogen for the antibody.
<b>Product Application Details</b>	
<b>Applications</b>	Western Blot, Immunohistochemistry, Immunohistochemistry-Paraffin
<b>Recommended Dilutions</b>	Western Blot 1-5 ug/ml, Immunohistochemistry 1:10-1:500, Immunohistochemistry-Paraffin 5-7 ug/ml
<b>Application Notes</b>	TSLPR is a glycoprotein with two major isoforms of 359 amino acids and 255 amino acids. In western blotting, bands may be visualized between 27 kD and ~50 kD.

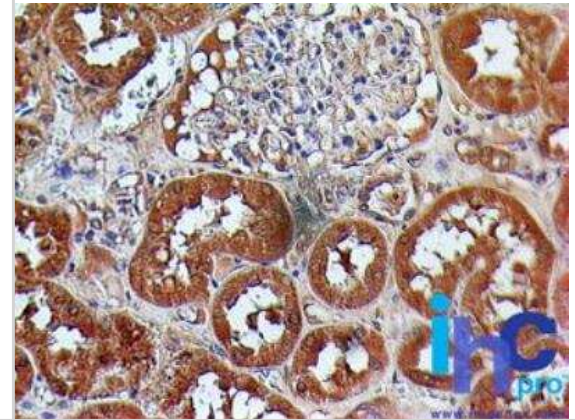


## Images

Western Blot: TSLP R/CRLF2 Antibody [NBP2-22384] - Analysis of TSLPR in an A) partial recombinant protein (0.1 ug/ml) and B) human liver lysate (2ug/ml) using TSLPR antibody.



Immunohistochemistry-Paraffin: TSLP R/CRLF2 Antibody [NBP2-22384] - Paraffin-embedded normal human kidney tissue stained with TSLPR antibody (5 ug/ml), peroxidase-conjugate and DAB chromogen.





### **Novus Biologicals USA**

10730 E. Briarwood Avenue  
Centennial, CO 80112  
USA  
Phone: 303.730.1950  
Toll Free: 1.888.506.6887  
Fax: 303.730.1966  
nb-customerservice@bio-techne.com

### **Bio-Techne Canada**

21 Canmotor Ave  
Toronto, ON M8Z 4E6  
Canada  
Phone: 905.827.6400  
Toll Free: 855.668.8722  
Fax: 905.827.6402  
canada.inquires@bio-techne.com

### **Bio-Techne Ltd**

19 Barton Lane  
Abingdon Science Park  
Abingdon, OX14 3NB, United Kingdom  
Phone: (44) (0) 1235 529449  
Free Phone: 0800 37 34 15  
Fax: (44) (0) 1235 533420  
info.EMEA@bio-techne.com

### **General Contact Information**

[www.novusbio.com](http://www.novusbio.com)  
Technical Support: nb-technical@bio-techne.com  
Orders: nb-customerservice@bio-techne.com  
General: novus@novusbio.com

### **Products Related to NBP2-22384**

HAF007	Goat anti-Mouse IgG Secondary Antibody [HRP]
NB720-B	Rabbit anti-Mouse IgG (H+L) Secondary Antibody [Biotin]
NBP1-43317-0.5mg	Mouse IgG2b Kappa Light Chain Isotype Control (MG2b)
NBP2-53075-50ug	Recombinant Human TSLPR/CRLF2 His Protein

### **Limitations**

This product is for research use only and is not approved for use in humans or in clinical diagnosis. Primary Antibodies are guaranteed for 1 year from date of receipt.

For more information on our 100% guarantee, please visit [www.novusbio.com/guarantee](http://www.novusbio.com/guarantee)

Earn gift cards/discounts by submitting a review: [www.novusbio.com/reviews/submit/NBP2-22384](http://www.novusbio.com/reviews/submit/NBP2-22384)

Earn gift cards/discounts by submitting a publication using this product:  
[www.novusbio.com/publications](http://www.novusbio.com/publications)

