

Product Datasheet

SNRPC Antibody NBP2-22299

Unit Size: 100 ul

Store at 4C. Do not freeze.

www.novusbio.com



technical@novusbio.com

Protocols, Publications, Related Products, Reviews, Research Tools and Images at:
www.novusbio.com/NBP2-22299

Updated 2/19/2021 v.20.1

Earn rewards for product
reviews and publications.

Submit a publication at www.novusbio.com/publications

Submit a review at www.novusbio.com/reviews/destination/NBP2-22299



NBP2-22299

SNRPC Antibody

Product Information	
Unit Size	100 ul
Concentration	1.0 mg/ml
Storage	Store at 4C. Do not freeze.
Clonality	Polyclonal
Preservative	0.09% Sodium Azide
Isotype	IgG
Purity	Immunogen affinity purified
Buffer	Tris-Citrate/Phosphate (pH 7.0 - 8.0)

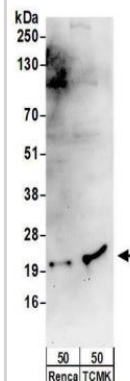
Product Description	
Host	Rabbit
Gene ID	6631
Gene Symbol	SNRPC
Species	Human, Mouse
Immunogen	The immunogen this antibody was made to, maps to a region between residue 109 to 159 of human Small Nuclear Ribonucleoprotein Polypeptide C using the numbering given in entry NP_003084.1 (GenelD 6631).

Product Application Details	
Applications	Western Blot, Immunoprecipitation
Recommended Dilutions	Western Blot 1:1000 - 1:5000, Immunoprecipitation 2 - 10 ug/mg

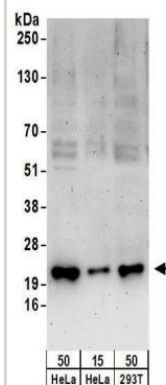


Images

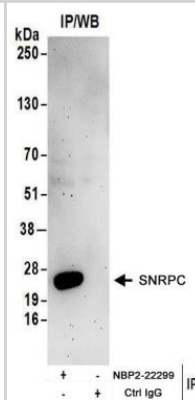
Western Blot: SNRPC Antibody [NBP2-22299] - Whole cell lysate (50 ug) from Renca and TCMK-1 cells. NBP2-22299 used for WB at 1 ug/ml. Detection: Chemiluminescence with an exposure time of 3 minutes.



Western Blot: SNRPC Antibody [NBP2-22299] - Whole cell lysate from HeLa (15 and 50 ug), and 293T (50ug) cells. NBP2-22299 used for WB at 0.4 ug/ml. Detection: Chemiluminescence with an exposure time of 3 minutes.



Immunoprecipitation: SNRPC Antibody [NBP2-22299] - Whole cell lysate (1 mg for IP; 20% of IP loaded) from HeLa cells. NBP2-22299 used for IP at 6 ug/mg lysate. For blotting immunoprecipitated U1C, NBP2-22299 was used at 1 ug/ml. Detection: Chemiluminescence with an exposure time of 3 minutes.





Novus Biologicals USA

10730 E. Briarwood Avenue
Centennial, CO 80112
USA

Phone: 303.730.1950
Toll Free: 1.888.506.6887
Fax: 303.730.1966
novus@novusbio.com

Bio-Techne Canada

21 Canmotor Ave
Toronto, ON M8Z 4E6
Canada

Phone: 905.827.6400
Toll Free: 855.668.8722
Fax: 905.827.6402
canada.inquires@bio-techne.com

Bio-Techne Ltd

19 Barton Lane
Abingdon Science Park
Abingdon, OX14 3NB, United Kingdom
Phone: (44) (0) 1235 529449
Free Phone: 0800 37 34 15
Fax: (44) (0) 1235 533420
info.EMEA@bio-techne.com

General Contact Information

www.novusbio.com
Technical Support: technical@novusbio.com
Orders: orders@novusbio.com
General: novus@novusbio.com

Limitations

This product is for research use only and is not approved for use in humans or in clinical diagnosis. Primary Antibodies are guaranteed for 1 year from date of receipt.

For more information on our 100% guarantee, please visit www.novusbio.com/guarantee

Earn gift cards/discounts by submitting a review: www.novusbio.com/reviews/submit/NBP2-22299

Earn gift cards/discounts by submitting a publication using this product:
www.novusbio.com/publications

