

Product Datasheet

PSME4 Antibody NBP2-22236

Unit Size: 100 ul

Store at 4C. Do not freeze.

www.novusbio.com



technical@novusbio.com

Publications: 7

Protocols, Publications, Related Products, Reviews, Research Tools and Images at:
www.novusbio.com/NBP2-22236

Updated 10/23/2024 v.20.1

Earn rewards for product
reviews and publications.

Submit a publication at www.novusbio.com/publications

Submit a review at www.novusbio.com/reviews/destination/NBP2-22236



NBP2-22236

PSME4 Antibody

Product Information	
Unit Size	100 ul
Concentration	1.0 mg/ml
Storage	Store at 4C. Do not freeze.
Clonality	Polyclonal
Preservative	0.09% Sodium Azide
Isotype	IgG
Purity	Immunogen affinity purified
Buffer	Tris-Citrate/Phosphate (pH 7.0 - 8.0)

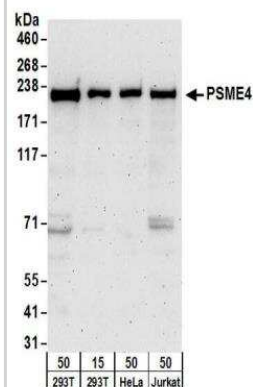
Product Description	
Host	Rabbit
Gene ID	23198
Gene Symbol	PSME4
Species	Human
Immunogen	The immunogen this antibody was made to, maps to a region between residue 1 and 50 of human Proteasome (Prosome, Macropain) Activator subunit 4 using the numbering given in entry NP_055429.2 (GenelD 23198).

Product Application Details	
Applications	Western Blot, Immunohistochemistry, Immunohistochemistry-Paraffin, Immunoprecipitation
Recommended Dilutions	Western Blot 1:1000 - 1:5000, Immunohistochemistry, Immunoprecipitation 2 - 10 ug/mg, Immunohistochemistry-Paraffin 1:500- 1:2000
Application Notes	Epitope retrieval with citrate buffer pH6.0 is recommended for FFPE tissue sections.

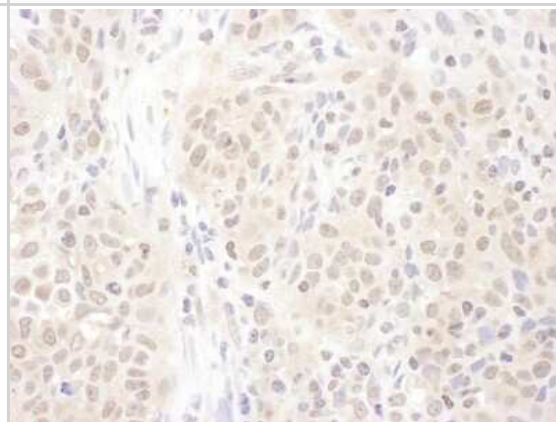


Images

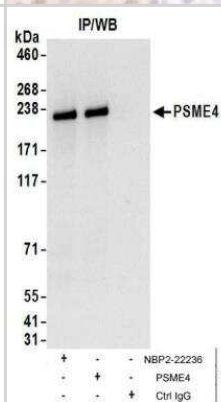
Western Blot: PSME4 Antibody [NBP2-22236] - Whole cell lysate from 293T (15 and 50 ug), HeLa (50 ug), and Jurkat (50 ug) cells. NBP2-22236 used for WB at 0.4 ug/ml. Detection: Chemiluminescence with an exposure time of 3 minutes.



Immunohistochemistry-Paraffin: PSME4 Antibody [NBP2-22236] - Human non-small cell lung cancer. Antibody: Affinity purified rabbit anti-PSME4 used at a dilution of 1:1,000 (1ug/ml). Detection: DAB. Counterstain: Hematoxylin (blue).



Immunoprecipitation: PSME4 Antibody [NBP2-22236] - Whole cell lysate (1 mg for IP; 20% of IP loaded) from 293T cells. NBP2-22236 used for IP at 6 ug/mg lysate. PSME4 was also immunoprecipitated by rabbit anti-PSME4 antibody. For blotting immunoprecipitated PSME4, NBP2-22236 was used at 1 ug/ml. Detection: Chemiluminescence with an exposure time of 10 seconds.



Publications

Mamrosh JL, Sherman DJ, Cohen JR et al. Quantitative measurement of the requirement of diverse protein degradation pathways in MHC class I peptide presentation Science advances 2023-06-23 [PMID: 37352349] (WB, Human)

Yazgili AS, Ebstein F, Meiners S The Proteasome Activator PA200/PSME4: An Emerging New Player in Health and Disease Biomolecules 2022-08-20 [PMID: 36009043] (WB, Human)

Zieba, B A, Henry, L Et al. The proteasome maturation protein POMP increases proteasome assembly and activity in psoriatic lesional skin. J Dermatol Sci 2017-10-01 [PMID: 28728908] (ICC/IF, Human)

Aladdin, A, Yao, Y Et al. The Proteasome Activators Blm10/PA200 Enhance the Proteasomal Degradation of N-Terminal Huntingtin. Biomolecules 2020-11-20 [PMID: 33233776] (WB, ICC/IF, Human)

Yazgili AS, Meul T, Welk V et al. In-gel proteasome assay to determine the activity, amount, and composition of proteasome complexes from mammalian cells or tissues STAR protocols 2021-06-18 [PMID: 34027484]

de Jesus AA, Brehm A, VanTries R et al. Novel Proteasome Assembly Chaperone mutations in PSMG2/PAC2, cause the autoinflammatory interferonopathy, CANDLE/PRAAS4. J. Allergy Clin. Immunol. 2019-01-18 [PMID: 30664889] (WB, Human)

Welk V, Coux O, Kleene V et al. Inhibition of Proteasome Activity Induces Formation of Alternative Proteasome Complexes. J. Biol. Chem. 2016-04-18 [PMID: 27129254] (WB, Human)





Novus Biologicals USA

10730 E. Briarwood Avenue
Centennial, CO 80112
USA
Phone: 303.730.1950
Toll Free: 1.888.506.6887
Fax: 303.730.1966
nb-customerservice@bio-techne.com

Bio-Techne Canada

21 Canmotor Ave
Toronto, ON M8Z 4E6
Canada
Phone: 905.827.6400
Toll Free: 855.668.8722
Fax: 905.827.6402
canada.inquires@bio-techne.com

Bio-Techne Ltd

19 Barton Lane
Abingdon Science Park
Abingdon, OX14 3NB, United Kingdom
Phone: (44) (0) 1235 529449
Free Phone: 0800 37 34 15
Fax: (44) (0) 1235 533420
info.EMEA@bio-techne.com

General Contact Information

www.novusbio.com
Technical Support: nb-technical@bio-techne.com
Orders: nb-customerservice@bio-techne.com
General: novus@novusbio.com

Products Related to NBP2-22236

HAF008	Goat anti-Rabbit IgG Secondary Antibody [HRP]
NB7160	Goat anti-Rabbit IgG (H+L) Secondary Antibody [HRP]
NBP2-24891	Rabbit IgG Isotype Control
NBP2-32575PEP	PSME4 Recombinant Protein Antigen

Limitations

This product is for research use only and is not approved for use in humans or in clinical diagnosis. Primary Antibodies are guaranteed for 1 year from date of receipt.

For more information on our 100% guarantee, please visit www.novusbio.com/guarantee

Earn gift cards/discounts by submitting a review: www.novusbio.com/reviews/submit/NBP2-22236

Earn gift cards/discounts by submitting a publication using this product:
www.novusbio.com/publications

