

Product Datasheet

CD19 Antibody (2E2) NBP2-22198

Unit Size: 0.1 ml

Store at 4C short term. Aliquot and store at -20C long term. Avoid freeze-thaw cycles.

www.novusbio.com



technical@novusbio.com

Publications: 1

Protocols, Publications, Related Products, Reviews, Research Tools and Images at:
www.novusbio.com/NBP2-22198

Updated 1/11/2026 v.20.1

Earn rewards for product
reviews and publications.

Submit a publication at www.novusbio.com/publications

Submit a review at www.novusbio.com/reviews/destination/NBP2-22198



NBP2-22198

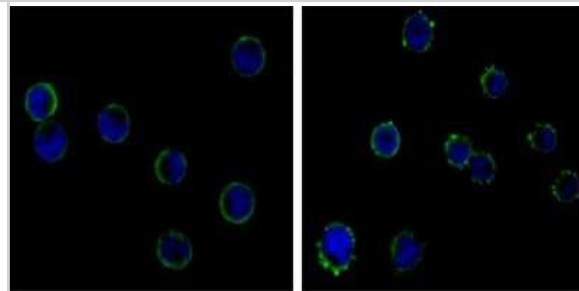
CD19 Antibody (2E2)

Product Information	
Unit Size	0.1 ml
Concentration	This product is unpurified. The exact concentration of antibody is not quantifiable.
Storage	Store at 4C short term. Aliquot and store at -20C long term. Avoid freeze-thaw cycles.
Clonality	Monoclonal
Clone	2E2
Preservative	0.03% Sodium Azide
Isotype	IgG2b
Purity	Ascites
Buffer	Ascites
Target Molecular Weight	61 kDa
Product Description	
Description	Novus Biologicals Mouse CD19 Antibody (2E2) (NBP2-22198) is a monoclonal antibody validated for use in ELISA, Flow and ICC/IF. Anti-CD19 Antibody: Cited in 1 publication. All Novus Biologicals antibodies are covered by our 100% guarantee.
Host	Mouse
Gene ID	930
Gene Symbol	CD19
Species	Human
Immunogen	Purified recombinant fragment of human CD19 expressed in E. Coli.
Product Application Details	
Applications	ELISA, Flow Cytometry, Immunocytochemistry/ Immunofluorescence
Recommended Dilutions	Flow Cytometry 1:200-1:400, ELISA 1:10000, Immunocytochemistry/ Immunofluorescence 1:200-1:1000

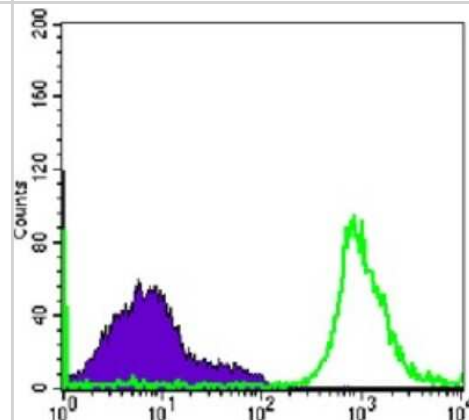


Images

Immunocytochemistry/Immunofluorescence: CD19 Antibody (2E2) [NBP2-22198] - Immunofluorescence analysis of HL-60(left) and K562 (right) cells using CD19 mouse mAb (green). Blue: DRAQ5 fluorescent DNA dye.



Flow Cytometry: CD19 Antibody (2E2) [NBP2-22198] - Flow cytometric analysis of Raji cells using CD19 mouse mAb (green) and negative control (purple).



Publications

Patlin B, Schwerdtfeger L, Tobet S Neuropeptide stimulation of physiological and immunological responses in precision-cut lung slices *Physiological reports* 2023-11-01 [PMID: 37994278]



Novus Biologicals USA

10730 E. Briarwood Avenue
Centennial, CO 80112
USA
Phone: 303.730.1950
Toll Free: 1.888.506.6887
Fax: 303.730.1966
nb-customerservice@bio-techne.com

Bio-Techne Canada

21 Canmotor Ave
Toronto, ON M8Z 4E6
Canada
Phone: 905.827.6400
Toll Free: 855.668.8722
Fax: 905.827.6402
canada.inquires@bio-techne.com

Bio-Techne Ltd

19 Barton Lane
Abingdon Science Park
Abingdon, OX14 3NB, United Kingdom
Phone: (44) (0) 1235 529449
Free Phone: 0800 37 34 15
Fax: (44) (0) 1235 533420
info.EMEA@bio-techne.com

General Contact Information

www.novusbio.com
Technical Support: nb-technical@bio-techne.com
Orders: nb-customerservice@bio-techne.com
General: novus@novusbio.com

Limitations

This product is for research use only and is not approved for use in humans or in clinical diagnosis. Primary Antibodies are guaranteed for 1 year from date of receipt.

For more information on our 100% guarantee, please visit www.novusbio.com/guarantee

Earn gift cards/discounts by submitting a review: www.novusbio.com/reviews/submit/NBP2-22198

Earn gift cards/discounts by submitting a publication using this product:
www.novusbio.com/publications

