

Product Datasheet

C-Reactive Protein/CRP Antibody (1G1) NBP2-22192

Unit Size: 0.1 ml

Store at 4C short term. Aliquot and store at -20C long term. Avoid freeze-thaw cycles.

www.novusbio.com



technical@novusbio.com

Protocols, Publications, Related Products, Reviews, Research Tools and Images at:
www.novusbio.com/NBP2-22192

Updated 5/13/2021 v.20.1

Earn rewards for product
reviews and publications.

Submit a publication at www.novusbio.com/publications

Submit a review at www.novusbio.com/reviews/destination/NBP2-22192



NBP2-22192**C-Reactive Protein/CRP Antibody (1G1)**

Product Information	
Unit Size	0.1 ml
Concentration	This product is unpurified. The exact concentration of antibody is not quantifiable.
Storage	Store at 4C short term. Aliquot and store at -20C long term. Avoid freeze-thaw cycles.
Clonality	Monoclonal
Clone	1G1
Preservative	0.03% Sodium Azide
Isotype	IgG1
Purity	Unpurified
Buffer	Ascites
Target Molecular Weight	25 kDa

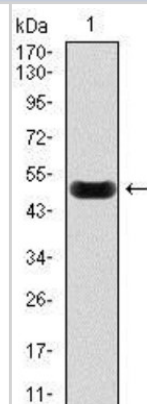
Product Description	
Host	Mouse
Gene ID	1401
Gene Symbol	CRP
Species	Human
Immunogen	Purified recombinant fragment of human CRP expressed in E. Coli.

Product Application Details	
Applications	Western Blot, ELISA, Flow Cytometry, Immunohistochemistry, Immunohistochemistry-Paraffin
Recommended Dilutions	Western Blot 1:500-1:2000, Flow Cytometry 1:200-1:400, ELISA 1:10000, Immunohistochemistry 1:10-1:500, Immunohistochemistry-Paraffin 1:200-1:1000

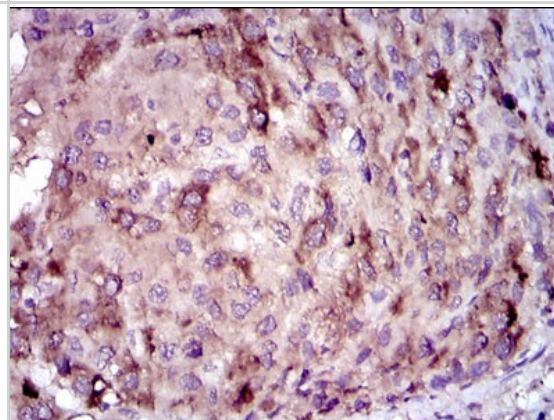


Images

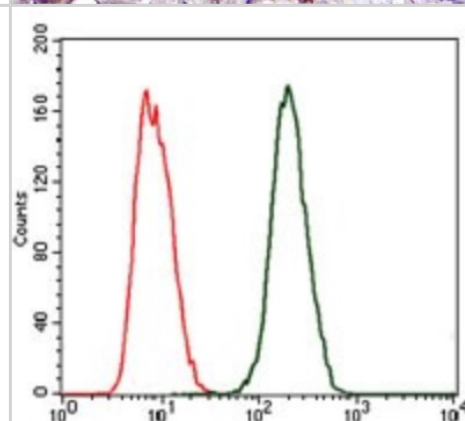
Western Blot: C-Reactive Protein/CRP Antibody (1G1) [NBP2-22192] - Western blot analysis using C-Reactive Protein mAb against human C-Reactive Protein recombinant protein. (AA: 1-224, Expected MW is 51 kDa)



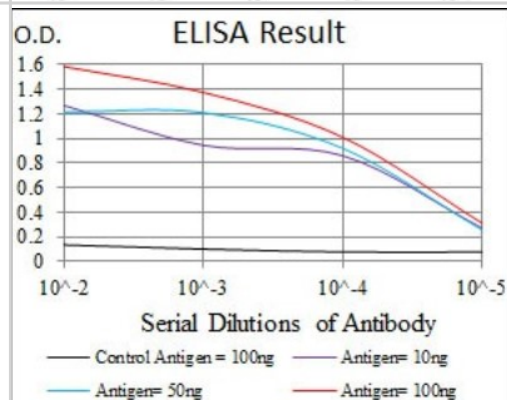
Immunohistochemistry-Paraffin: C-Reactive Protein/CRP Antibody (1G1) [NBP2-22192] - Immunohistochemical analysis of paraffin-embedded liver cancer tissues using C-Reactive Protein mouse mAb with DAB staining.



Flow Cytometry: C-Reactive Protein/CRP Antibody (1G1) [NBP2-22192] - C-Reactive Protein mouse mAb (green) and negative control (red).



ELISA: C-Reactive Protein/CRP Antibody (1G1) [NBP2-22192] - Red: Control Antigen (100ng); Purple: Antigen (10ng); Green: Antigen (50ng); Blue: Antigen (100ng)





Novus Biologicals USA

10730 E. Briarwood Avenue
Centennial, CO 80112
USA
Phone: 303.730.1950
Toll Free: 1.888.506.6887
Fax: 303.730.1966
novus@novusbio.com

Bio-Techne Canada

21 Canmotor Ave
Toronto, ON M8Z 4E6
Canada
Phone: 905.827.6400
Toll Free: 855.668.8722
Fax: 905.827.6402
canada.inquires@bio-techne.com

Bio-Techne Ltd

19 Barton Lane
Abingdon Science Park
Abingdon, OX14 3NB, United Kingdom
Phone: (44) (0) 1235 529449
Free Phone: 0800 37 34 15
Fax: (44) (0) 1235 533420
info.EMEA@bio-techne.com

General Contact Information

www.novusbio.com
Technical Support: technical@novusbio.com
Orders: orders@novusbio.com
General: novus@novusbio.com

Limitations

This product is for research use only and is not approved for use in humans or in clinical diagnosis. Primary Antibodies are guaranteed for 1 year from date of receipt.

For more information on our 100% guarantee, please visit www.novusbio.com/guarantee

Earn gift cards/discounts by submitting a review: www.novusbio.com/reviews/submit/NBP2-22192

Earn gift cards/discounts by submitting a publication using this product:
www.novusbio.com/publications

