

Product Datasheet

Sodium Potassium ATPase Alpha 1 [p Tyr10] Antibody NBP2-22107

Unit Size: 0.1 ml

Store at 4C short term. Aliquot and store at -20C long term. Avoid freeze-thaw cycles.

www.novusbio.com



technical@novusbio.com

Protocols, Publications, Related Products, Reviews, Research Tools and Images at:
www.novusbio.com/NBP2-22107

Updated 10/3/2017 v.20.1

Earn rewards for product
reviews and publications.

Submit a publication at www.novusbio.com/publications

Submit a review at www.novusbio.com/reviews/destination/NBP2-22107



NBP2-22107**Sodium Potassium ATPase Alpha 1 [p Tyr10] Antibody**

Product Information	
Unit Size	0.1 ml
Concentration	1.0 mg/ml
Storage	Store at 4C short term. Aliquot and store at -20C long term. Avoid freeze-thaw cycles.
Clonality	Polyclonal
Preservative	0.05% Sodium Azide
Purity	Immunogen affinity purified
Buffer	PBS (pH 7.2)
Target Molecular Weight	112 kDa

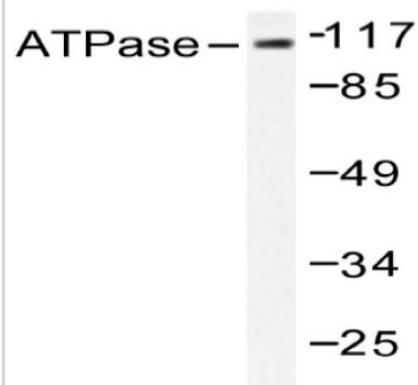
Product Description	
Host	Rabbit
Gene ID	476
Gene Symbol	ATP1A1
Species	Human, Mouse, Rat
Marker	Plasma Membrane Marker
Specificity/Sensitivity	Na ⁺ /K ⁺ -ATPase alpha 1 (Y10) pAb detects endogenous levels of A Na ⁺ /K ⁺ -ATPase alpha 1 protein.
Immunogen	This antibody detects Sodium Potassium ATPase Alpha 1 at phospho Tyrosine 10.

Product Application Details	
Applications	Western Blot, Immunocytochemistry/Immunofluorescence, Immunohistochemistry, Immunohistochemistry-Paraffin
Recommended Dilutions	Western Blot 1:500-1:1000, Immunohistochemistry 1:50-1:200, Immunocytochemistry/Immunofluorescence 1:50-1:200, Immunohistochemistry-Paraffin 1:10-1:500

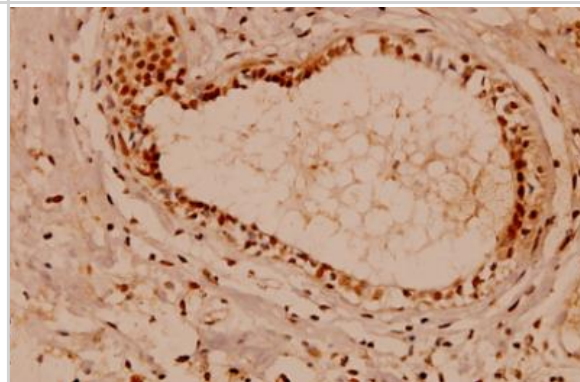


Images

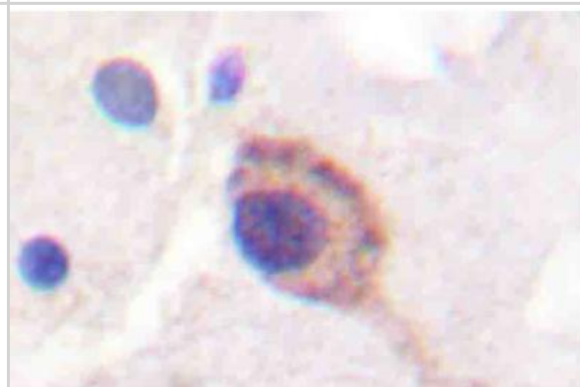
Western Blot: Sodium Potassium ATPase Alpha 1 [p Tyr10] Antibody [NBP2-22107] - Analysis of Na⁺/K⁺-ATPase alpha 1 (Y10) pAb in extracts from 293 PMA 125ng/ml 30' cells.



Immunohistochemistry-Paraffin: Sodium Potassium ATPase Alpha 1 [p Tyr10] Antibody [NBP2-22107] - Analyzes of paraffin-embedded human breast carcinoma tissue at 1:100.



Immunohistochemistry-Paraffin: Sodium Potassium ATPase Alpha 1 [p Tyr10] Antibody [NBP2-22107] - Analyzes of Na⁺/K⁺-ATPase alpha 1 (Y10) pAb in paraffin-embedded human breast carcinoma tissue.





Novus Biologicals USA

10730 E. Briarwood Avenue
Centennial, CO 80112
USA
Phone: 303.730.1950
Toll Free: 1.888.506.6887
Fax: 303.730.1966
novus@novusbio.com

Novus Biologicals Canada

461 North Service Road West, Unit B37
Oakville, ON L6M 2V5
Canada
Phone: 905.827.6400
Toll Free: 855.668.8722
Fax: 905.827.6402
canada@novusbio.com

Novus Biologicals Europe

19 Barton Lane
Abingdon Science Park
Abingdon, OX14 3NB, United Kingdom
Phone: (44) (0) 1235 529449
Free Phone: 0800 37 34 15
Fax: (44) (0) 1235 533420
info@bio-techne.com

General Contact Information

www.novusbio.com
Technical Support: technical@novusbio.com
Orders: orders@novusbio.com
General: novus@novusbio.com

Limitations

This product is for research use only and is not approved for use in humans or in clinical diagnosis. Primary Antibodies are guaranteed for 1 year from date of receipt.

For more information on our 100% guarantee, please visit www.novusbio.com/guarantee

Earn gift cards/discounts by submitting a review: www.novusbio.com/reviews/submit/NBP2-22107

Earn gift cards/discounts by submitting a publication using this product:
www.novusbio.com/publications

