

Product Datasheet

Lambda Light Chain Antibody (K22-Y) NBP2-21837-200ul

Unit Size: 200 ul

Store at 4C. Do not freeze.

www.novusbio.com



technical@novusbio.com

Protocols, Publications, Related Products, Reviews, Research Tools and Images at:
www.novusbio.com/NBP2-21837

Updated 12/16/2020 v.20.1

Earn rewards for product
reviews and publications.

Submit a publication at www.novusbio.com/publications

Submit a review at www.novusbio.com/reviews/destination/NBP2-21837



NBP2-21837-200ul

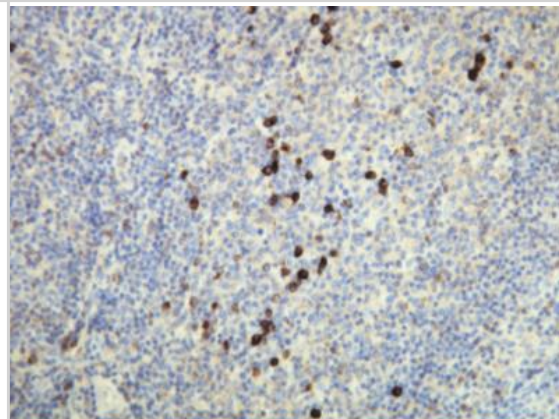
Lambda Light Chain Antibody (K22-Y)

Product Information	
Unit Size	200 ul
Concentration	Please see the vial label for concentration. If unlisted please contact technical services.
Storage	Store at 4C. Do not freeze.
Clonality	Monoclonal
Clone	K22-Y
Preservative	0.05% Sodium Azide
Isotype	IgG
Purity	Protein A or G purified
Buffer	20mM Tris-HCl (pH 8.0) and 20mg/ml BSA
Product Description	
Host	Rabbit
Gene ID	3537
Gene Symbol	IGLC1
Species	Human
Immunogen	Peptide derived from N-terminal sequence of human lambda light chain IgG. Antibody recognizes the epitope between Ala50 - Ser68.
Product Application Details	
Applications	Immunohistochemistry, Immunohistochemistry-Paraffin
Recommended Dilutions	Immunohistochemistry 1:10-1:500, Immunohistochemistry-Paraffin 1:100-1:1500

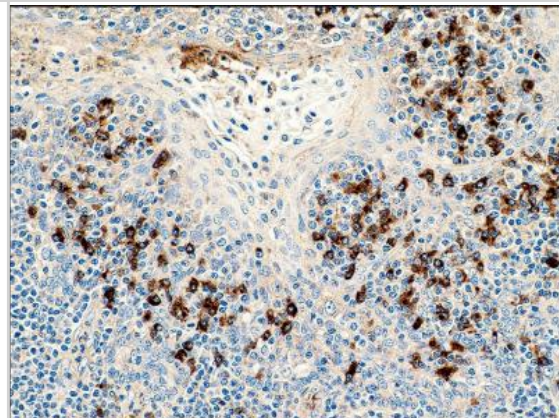


Images

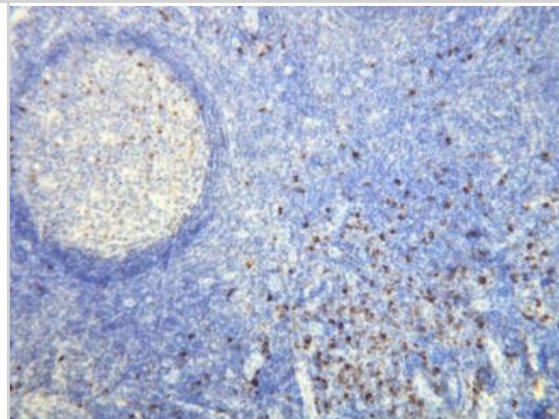
Immunohistochemistry-Paraffin: Human lambda light chain Antibody (K22-Y) [NBP2-21837] - Expression of the Lambda Light Chain immunoglobulin in the plasma cells of the palatine tonsil. Formalin fixed, paraffin embedded human tissues (4 um sections) stained with anti-Human Lambda light chain monospecific clonal antibody.



Immunohistochemistry-Paraffin: Human lambda light chain Antibody (K22-Y) [NBP2-21837] - Formalin-fixed and paraffin-embedded human tonsil tissue (4 um) stained with anti-Human Lambda Light Chain antibody.



Immunohistochemistry-Paraffin: Human lambda light chain Antibody (K22-Y) [NBP2-21837] - Expression of the Lambda Light Chain immunoglobulin in the plasma cells of the palatine tonsil. Formalin fixed, paraffin embedded human tissues (4 um sections) stained with anti-Human Lambda light chain monospecific clonal antibody.





Novus Biologicals USA

10730 E. Briarwood Avenue
Centennial, CO 80112
USA
Phone: 303.730.1950
Toll Free: 1.888.506.6887
Fax: 303.730.1966
novus@novusbio.com

Bio-Techne Canada

21 Canmotor Ave
Toronto, ON M8Z 4E6
Canada
Phone: 905.827.6400
Toll Free: 855.668.8722
Fax: 905.827.6402
canada.inquires@bio-techne.com

Bio-Techne Ltd

19 Barton Lane
Abingdon Science Park
Abingdon, OX14 3NB, United Kingdom
Phone: (44) (0) 1235 529449
Free Phone: 0800 37 34 15
Fax: (44) (0) 1235 533420
info.EMEA@bio-techne.com

General Contact Information

www.novusbio.com
Technical Support: technical@novusbio.com
Orders: orders@novusbio.com
General: novus@novusbio.com

Limitations

This product is for research use only and is not approved for use in humans or in clinical diagnosis. Primary Antibodies are guaranteed for 1 year from date of receipt.

For more information on our 100% guarantee, please visit www.novusbio.com/guarantee

Earn gift cards/discounts by submitting a review: www.novusbio.com/reviews/submit/NBP2-21837

Earn gift cards/discounts by submitting a publication using this product:
www.novusbio.com/publications

