

# Product Datasheet

## PKC beta 2 Antibody (Q19-V) [FITC] NBP2-21817-100Test

Unit Size: 100 Tests

Store at 4C in the dark. Do not freeze.

[www.novusbio.com](http://www.novusbio.com)



[technical@novusbio.com](mailto:technical@novusbio.com)

Protocols, Publications, Related Products, Reviews, Research Tools and Images at:  
[www.novusbio.com/NBP2-21817](http://www.novusbio.com/NBP2-21817)

Updated 11/6/2022 v.20.1

Earn rewards for product  
reviews and publications.

Submit a publication at [www.novusbio.com/publications](http://www.novusbio.com/publications)

Submit a review at [www.novusbio.com/reviews/destination/NBP2-21817](http://www.novusbio.com/reviews/destination/NBP2-21817)



**NBP2-21817-100Test**

PKC beta 2 Antibody (Q19-V) [FITC]

**Product Information**

<b>Unit Size</b>	100 Tests
<b>Concentration</b>	Please see the vial label for concentration. If unlisted please contact technical services.
<b>Storage</b>	Store at 4C in the dark. Do not freeze.
<b>Clonality</b>	Monoclonal
<b>Clone</b>	Q19-V
<b>Preservative</b>	0.05% Sodium Azide
<b>Isotype</b>	IgG
<b>Conjugate</b>	FITC
<b>Purity</b>	Immunogen affinity purified
<b>Buffer</b>	20mM Tris-HCl (pH 8.0) and 10 mg/ml BSA

**Product Description**

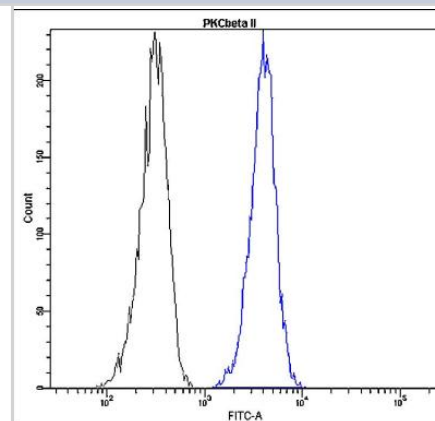
<b>Host</b>	Rabbit
<b>Gene ID</b>	5579
<b>Gene Symbol</b>	PRKCB
<b>Species</b>	Human
<b>Immunogen</b>	This antibody targets PKC betal.
<b>Notes</b>	This antibody is immunoaffinity purified with immunogenic peptide as a ligand.

**Product Application Details**

<b>Applications</b>	Flow Cytometry
<b>Recommended Dilutions</b>	Flow Cytometry 1:50-1:100

**Images**

Flow Cytometry: PKC beta 2 Antibody (Q19-V) [FITC] [NBP2-21817] - Profile of peripheral blood lymphocytes. Cells were fixed, permeabilized and stained with anti-human PKC beta 2 FITC (blue, used 10 ul per test) or with an isotype control (black).





### **Novus Biologicals USA**

10730 E. Briarwood Avenue  
Centennial, CO 80112  
USA  
Phone: 303.730.1950  
Toll Free: 1.888.506.6887  
Fax: 303.730.1966  
novus@novusbio.com

### **Bio-Techne Canada**

21 Canmotor Ave  
Toronto, ON M8Z 4E6  
Canada  
Phone: 905.827.6400  
Toll Free: 855.668.8722  
Fax: 905.827.6402  
canada.inquires@bio-techne.com

### **Bio-Techne Ltd**

19 Barton Lane  
Abingdon Science Park  
Abingdon, OX14 3NB, United Kingdom  
Phone: (44) (0) 1235 529449  
Free Phone: 0800 37 34 15  
Fax: (44) (0) 1235 533420  
info.EMEA@bio-techne.com

### **General Contact Information**

www.novusbio.com  
Technical Support: technical@novusbio.com  
Orders: orders@novusbio.com  
General: novus@novusbio.com

### **Limitations**

This product is for research use only and is not approved for use in humans or in clinical diagnosis. Primary Antibodies are guaranteed for 1 year from date of receipt.

For more information on our 100% guarantee, please visit [www.novusbio.com/guarantee](http://www.novusbio.com/guarantee)

Earn gift cards/discounts by submitting a review: [www.novusbio.com/reviews/submit/NBP2-21817](http://www.novusbio.com/reviews/submit/NBP2-21817)

Earn gift cards/discounts by submitting a publication using this product:  
[www.novusbio.com/publications](http://www.novusbio.com/publications)

