

# Product Datasheet

## PKC gamma Antibody (K21-L) [FITC] NBP2-21816-100Tests

Unit Size: 100 Tests

Store at 4C in the dark. Do not freeze.

[www.novusbio.com](http://www.novusbio.com)



[technical@novusbio.com](mailto:technical@novusbio.com)

Protocols, Publications, Related Products, Reviews, Research Tools and Images at:  
[www.novusbio.com/NBP2-21816](http://www.novusbio.com/NBP2-21816)

Updated 11/6/2022 v.20.1

Earn rewards for product  
reviews and publications.

Submit a publication at [www.novusbio.com/publications](http://www.novusbio.com/publications)

Submit a review at [www.novusbio.com/reviews/destination/NBP2-21816](http://www.novusbio.com/reviews/destination/NBP2-21816)



**NBP2-21816-100Tests**

PKC gamma Antibody (K21-L) [FITC]

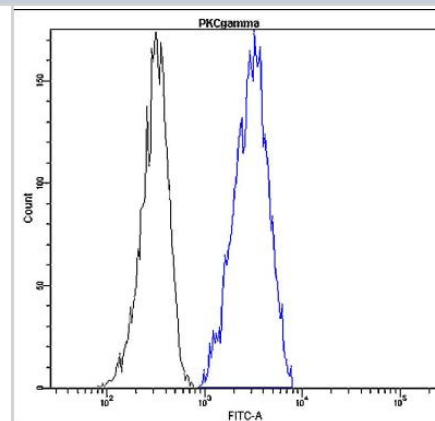
Product Information	
Unit Size	100 Tests
Concentration	Please see the vial label for concentration. If unlisted please contact technical services.
Storage	Store at 4C in the dark. Do not freeze.
Clonality	Monoclonal
Clone	K21-L
Preservative	0.05% Sodium Azide
Isotype	IgG
Conjugate	FITC
Purity	Immunogen affinity purified
Buffer	20mM Tris-HCl (pH 8.0) and 10 mg/ml BSA

Product Description	
Host	Rabbit
Gene ID	5582
Gene Symbol	PRKCG
Species	Human
Immunogen	This antibody targets PKC gamma.
Notes	This antibody is immunoaffinity purified with immunogenic peptide as a ligand.

Product Application Details	
Applications	Flow Cytometry
Recommended Dilutions	Flow Cytometry 1:50-1:100

**Images**

Flow Cytometry: PKC gamma Antibody (K21-L) [FITC] [NBP2-21816] - Profile of peripheral blood lymphocytes. Cells were fixed, permeabilized and stained with anti-human PKC gamma FITC (blue, used 10 ul per test) or with an isotype control (black).





### **Novus Biologicals USA**

10730 E. Briarwood Avenue  
Centennial, CO 80112  
USA

Phone: 303.730.1950  
Toll Free: 1.888.506.6887  
Fax: 303.730.1966  
novus@novusbio.com

### **Bio-Techne Canada**

21 Canmotor Ave  
Toronto, ON M8Z 4E6  
Canada

Phone: 905.827.6400  
Toll Free: 855.668.8722  
Fax: 905.827.6402  
canada.inquires@bio-techne.com

### **Bio-Techne Ltd**

19 Barton Lane  
Abingdon Science Park  
Abingdon, OX14 3NB, United Kingdom

Phone: (44) (0) 1235 529449  
Free Phone: 0800 37 34 15  
Fax: (44) (0) 1235 533420  
info.EMEA@bio-techne.com

### **General Contact Information**

www.novusbio.com  
Technical Support: technical@novusbio.com  
Orders: orders@novusbio.com  
General: novus@novusbio.com

### **Limitations**

This product is for research use only and is not approved for use in humans or in clinical diagnosis. Primary Antibodies are guaranteed for 1 year from date of receipt.

For more information on our 100% guarantee, please visit [www.novusbio.com/guarantee](http://www.novusbio.com/guarantee)

Earn gift cards/discounts by submitting a review: [www.novusbio.com/reviews/submit/NBP2-21816](http://www.novusbio.com/reviews/submit/NBP2-21816)

Earn gift cards/discounts by submitting a publication using this product:  
[www.novusbio.com/publications](http://www.novusbio.com/publications)

