

Product Datasheet

BIN1 Antibody (12A) **NBP2-21689**

Unit Size: 0.1 mg

Store at -20C short term. Aliquot and store at -80C long term. Avoid freeze-thaw cycles.

www.novusbio.com



technical@novusbio.com

Protocols, Publications, Related Products, Reviews, Research Tools and Images at:
www.novusbio.com/NBP2-21689

Updated 10/23/2024 v.20.1

Earn rewards for product
reviews and publications.

Submit a publication at www.novusbio.com/publications

Submit a review at www.novusbio.com/reviews/destination/NBP2-21689



NBP2-21689

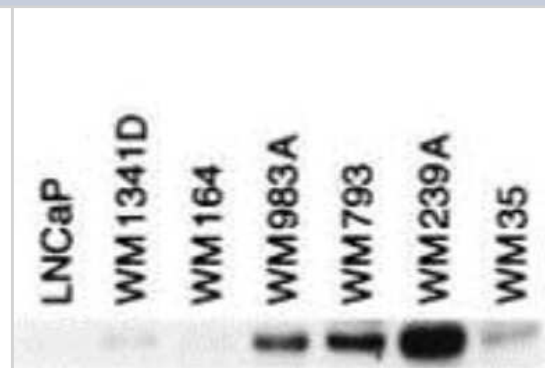
BIN1 Antibody (12A)

Product Information	
Unit Size	0.1 mg
Concentration	Please see the vial label for concentration. If unlisted please contact technical services.
Storage	Store at -20C short term. Aliquot and store at -80C long term. Avoid freeze-thaw cycles.
Clonality	Monoclonal
Clone	12A
Preservative	0.01% Sodium Azide
Isotype	IgG1
Purity	Protein A purified
Buffer	0.02 M Potassium Phosphate, 0.15 M Sodium Chloride, pH 7.2
Product Description	
Description	<p>This antibody was purified from clarified mouse ascetic fluid by Protein A chromatography followed by extensive dialysis against the buffer stated above</p> <p>Store vial at -20C prior to opening. Aliquot contents and freeze at -20C or below for extended storage. Avoid cycles of freezing and thawing. Centrifuge product if not completely clear after standing at room temperature. This product is stable for several weeks at 4C as an undiluted liquid. Dilute only prior to immediate use.</p>
Host	Mouse
Gene ID	274
Gene Symbol	BIN1
Species	Human
Reactivity Notes	Cross-reactivity with BIN1 from other sources has not been determined
Immunogen	BIN1 Antibody (12A) was produced in mouse by repeated immunizations with 12A exon BIN1 protein followed by hybridoma development. (Uniprot: O00499)
Product Application Details	
Applications	Western Blot, ELISA
Recommended Dilutions	Western Blot 1:500-1:1500, ELISA 1:5000-1:50000
Application Notes	This product has been tested for use in ELISA and Western Blot. Specific conditions for reactivity should be optimized by the end user.

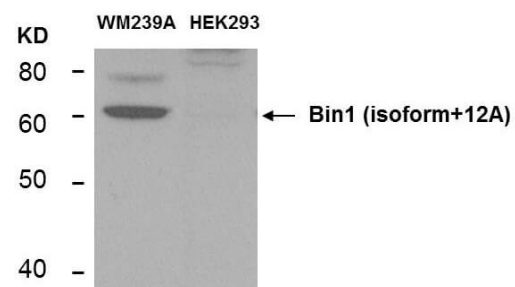


Images

Western Blot: BIN1 Antibody (12A) [NBP2-21689] - Mouse Anti-BIN-1 Antibody. Lane 1: LNCap. Lane 2: WM1341D. Lane 3: WM164. Lane 4: WM983A. Lane 5: WM793. Lane 6: WM239A. Lane 7: WM35. Load: 35 ug per lane. BIN-1 antibody at 1:400 for overnight at 4C. Secondary antibody: Dye800 mouse secondary antibody at 1:10,000 for 45 min at RT. Block: 5% Blocking Buffer overnight at 4C.



Western Blot of Rabbit Anti-BIN1 Antibody (12A). Lane 1: WM239A lysate. Lane 2: HEK293 lysate





Novus Biologicals USA

10730 E. Briarwood Avenue
Centennial, CO 80112
USA
Phone: 303.730.1950
Toll Free: 1.888.506.6887
Fax: 303.730.1966
nb-customerservice@bio-techne.com

Bio-Techne Canada

21 Canmotor Ave
Toronto, ON M8Z 4E6
Canada
Phone: 905.827.6400
Toll Free: 855.668.8722
Fax: 905.827.6402
canada.inquires@bio-techne.com

Bio-Techne Ltd

19 Barton Lane
Abingdon Science Park
Abingdon, OX14 3NB, United Kingdom
Phone: (44) (0) 1235 529449
Free Phone: 0800 37 34 15
Fax: (44) (0) 1235 533420
info.EMEA@bio-techne.com

General Contact Information

www.novusbio.com
Technical Support: nb-technical@bio-techne.com
Orders: nb-customerservice@bio-techne.com
General: novus@novusbio.com

Products Related to NBP2-21689

HAF007	Goat anti-Mouse IgG Secondary Antibody [HRP]
NB720-B	Rabbit anti-Mouse IgG (H+L) Secondary Antibody [Biotin]
NBP1-97005-0.5mg	Mouse IgG1 Isotype Control (MG1)
NBP1-45322-0.1mg	Recombinant Human BIN1 His Protein

Limitations

This product is for research use only and is not approved for use in humans or in clinical diagnosis. Primary Antibodies are guaranteed for 1 year from date of receipt.

For more information on our 100% guarantee, please visit www.novusbio.com/guarantee

Earn gift cards/discounts by submitting a review: www.novusbio.com/reviews/submit/NBP2-21689

Earn gift cards/discounts by submitting a publication using this product:
www.novusbio.com/publications

