

# Product Datasheet

## **BIN1 Antibody (2F11)** **NBP2-21675**

Unit Size: 0.1 mg

Store at -20C short term. Aliquot and store at -80C long term. Avoid freeze-thaw cycles.

[www.novusbio.com](http://www.novusbio.com)



[technical@novusbio.com](mailto:technical@novusbio.com)

### **Publications: 1**

Protocols, Publications, Related Products, Reviews, Research Tools and Images at:  
[www.novusbio.com/NBP2-21675](http://www.novusbio.com/NBP2-21675)

Updated 10/23/2024 v.20.1

**Earn rewards for product  
reviews and publications.**

Submit a publication at [www.novusbio.com/publications](http://www.novusbio.com/publications)

Submit a review at [www.novusbio.com/reviews/destination/NBP2-21675](http://www.novusbio.com/reviews/destination/NBP2-21675)



**NBP2-21675**

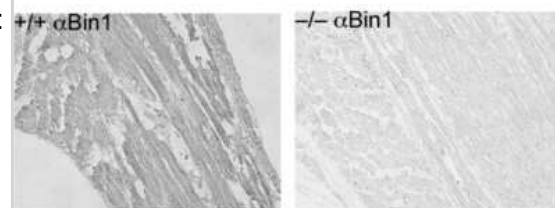
BIN1 Antibody (2F11)

Product Information	
Unit Size	0.1 mg
Concentration	Please see the vial label for concentration. If unlisted please contact technical services.
Storage	Store at -20C short term. Aliquot and store at -80C long term. Avoid freeze-thaw cycles.
Clonality	Monoclonal
Clone	2F11
Preservative	0.01% Sodium Azide
Isotype	IgG1
Purity	Protein A purified
Buffer	0.02 M Potassium Phosphate, 0.15 M Sodium Chloride, pH 7.2
Product Description	
Description	<p>This antibody was purified from clarified mouse ascetic fluid by Protein A chromatography followed by extensive dialysis against the buffer stated above</p> <p>Store vial at -20C prior to opening. Aliquot contents and freeze at -20C or below for extended storage. Avoid cycles of freezing and thawing. Centrifuge product if not completely clear after standing at room temperature. This product is stable for several weeks at 4C as an undiluted liquid. Dilute only prior to immediate use.</p>
Host	Mouse
Gene ID	274
Gene Symbol	BIN1
Species	Human, Mouse
Reactivity Notes	Cross-reactivity with BIN1 from other sources has not been determined
Immunogen	BIN1 Antibody (2F11) was produced in mouse by repeated immunizations with chimeric protein that encoded the human BIN1 BAR domain followed by hybridoma development. (Uniprot: O00499)
Product Application Details	
Applications	Western Blot, ELISA, Immunohistochemistry, Immunohistochemistry-Paraffin, Immunoprecipitation
Recommended Dilutions	Western Blot 1:500-1:1500, ELISA 1:5000-1:50000, Immunohistochemistry 1:100-1:500, Immunoprecipitation 10-100 ul, Immunohistochemistry-Paraffin 1:100-1:500
Application Notes	This product has been tested for use in Western Blot, ELISA, IP, and IHC. This antibody is suitable for. Specific conditions for reactivity should be optimized by the end user.

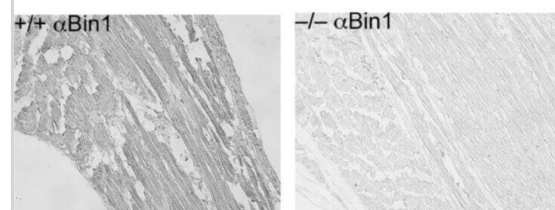


## Images

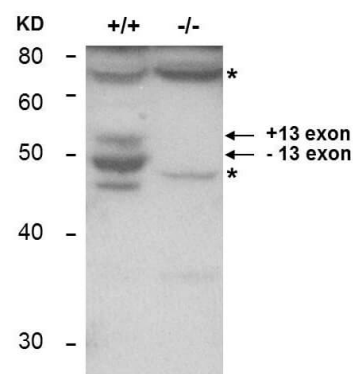
Immunohistochemistry-Paraffin: BIN1 Antibody (2F11) [NBP2-21675] - Mouse Anti-BIN1 antibody. Tissue: skeletal muscle from BIN-1 wild type and null mouse. Fixation: formalin fixed paraffin embedded. Antigen retrieval: not required. BIN-1 antibody for 1hr at RT. Secondary antibody: Peroxidase mouse secondary antibody at 1:10,000 for 45 min at RT. Localization: BIN1 is nuclear and cytoplasmic. Staining: BIN1 as precipitated brown signal.



Immunohistochemistry of Mouse Anti-BIN1 antibody. Tissue: skeletal muscle from BIN-1 wild type (+/+) and null (-/-) mouse. Fixation: formalin fixed paraffin embedded. Antigen retrieval: not required. Primary antibody: BIN-1 antibody for 1hr at RT. Secondary antibody: Peroxidase mouse secondary antibody at 1:10,000 for 45 min at RT. Localization: BIN1 is nuclear and cytoplasmic. Staining: BIN1 as precipitated brown signal.



Western Blot of Mouse Antibody. Lane 1: Keratinocyte derived from Bin-1 wild type. Lane 2: Keratinocyte derived from Bin-1 null mice. Load: 35 ug per lane. Primary antibody: BIN-1 antibody at 1:400 for overnight at 4C. Secondary antibody: IRDye800(TM) mouse secondary antibody at 1:10,000 for 45 min at RT. Block: 1xPBS, 0.4% Tween-20 (PBS/T ) overnight at 4C. Bin1 isoforms (+exon13, -exon13). \*indicates non-specific signal.



## Publications

Maartje Westhoff, Silvia G. del Villar, Taylor L. Voelker, Phung N. Thai, Heather C. Spooner, Alexandre D. Costa, Padmini Sirish, Nipavan Chiamvimonvat, Eamonn J. Dickson, Rose E. Dixon BIN1 knockdown rescues systolic dysfunction in aging male mouse hearts Nature Communications 2024-04-25 [PMID: 38664444]



### **Novus Biologicals USA**

10730 E. Briarwood Avenue  
Centennial, CO 80112  
USA  
Phone: 303.730.1950  
Toll Free: 1.888.506.6887  
Fax: 303.730.1966  
nb-customerservice@bio-techne.com

### **Bio-Techne Canada**

21 Canmotor Ave  
Toronto, ON M8Z 4E6  
Canada  
Phone: 905.827.6400  
Toll Free: 855.668.8722  
Fax: 905.827.6402  
canada.inquires@bio-techne.com

### **Bio-Techne Ltd**

19 Barton Lane  
Abingdon Science Park  
Abingdon, OX14 3NB, United Kingdom  
Phone: (44) (0) 1235 529449  
Free Phone: 0800 37 34 15  
Fax: (44) (0) 1235 533420  
info.EMEA@bio-techne.com

### **General Contact Information**

www.novusbio.com  
Technical Support: nb-technical@bio-techne.com  
Orders: nb-customerservice@bio-techne.com  
General: novus@novusbio.com

### **Products Related to NBP2-21675**

---

HAF007	Goat anti-Mouse IgG Secondary Antibody [HRP]
NB720-B	Rabbit anti-Mouse IgG (H+L) Secondary Antibody [Biotin]
NBP1-97005-0.5mg	Mouse IgG1 Isotype Control (MG1)
NBP1-45322-0.1mg	Recombinant Human BIN1 His Protein

---

### **Limitations**

This product is for research use only and is not approved for use in humans or in clinical diagnosis. Primary Antibodies are guaranteed for 1 year from date of receipt.

For more information on our 100% guarantee, please visit [www.novusbio.com/guarantee](http://www.novusbio.com/guarantee)

Earn gift cards/discounts by submitting a review: [www.novusbio.com/reviews/submit/NBP2-21675](http://www.novusbio.com/reviews/submit/NBP2-21675)

Earn gift cards/discounts by submitting a publication using this product:  
[www.novusbio.com/publications](http://www.novusbio.com/publications)

