

# Product Datasheet

## p35 Antibody NBP2-21650

Unit Size: 0.1 mg

Store lyophilized antibody at 4C. Aliquot reconstituted liquid and store at -20C. Avoid freeze-thaw cycles.

[www.novusbio.com](http://www.novusbio.com)



[technical@novusbio.com](mailto:technical@novusbio.com)

Protocols, Publications, Related Products, Reviews, Research Tools and Images at:  
[www.novusbio.com/NBP2-21650](http://www.novusbio.com/NBP2-21650)

Updated 10/23/2024 v.20.1

Earn rewards for product  
reviews and publications.

Submit a publication at [www.novusbio.com/publications](http://www.novusbio.com/publications)

Submit a review at [www.novusbio.com/reviews/destination/NBP2-21650](http://www.novusbio.com/reviews/destination/NBP2-21650)



**NBP2-21650**

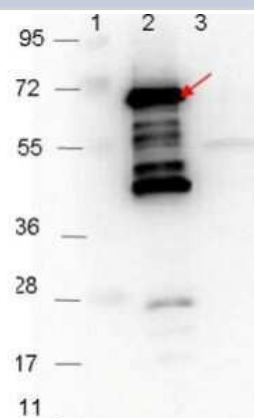
p35 Antibody

Product Information	
Unit Size	0.1 mg
Concentration	LYOPH mg/ml
Storage	Store lyophilized antibody at 4C. Aliquot reconstituted liquid and store at -20C. Avoid freeze-thaw cycles.
Clonality	Polyclonal
Preservative	0.01% Sodium Azide
Reconstitution Instructions	Reconstitute with 100 ul deionized water (or equivalent)
Isotype	IgG
Purity	Protein A purified
Buffer	Lyophilized from 0.02 M Potassium Phosphate, 0.15 M Sodium Chloride, pH 7.2
Product Description	
Description	<p>Tested for use in Western blotting and ELISA. Expect a band approximately 27.1 kDa in size corresponding to <i>Borrelia burgdorferi</i> OspA protein by Western blotting in the appropriate cell lysate or extract.</p> <p>This product was Protein-A purified and cross-adsorbed against MBP from monospecific antiserum by chromatography</p> <p>Store vial at 4C prior to restoration. For extended storage aliquot contents and freeze at -20C or below. Avoid cycles of freezing and thawing. Centrifuge product if not completely clear after standing at room temperature. This product is stable for several weeks at 4C as an undiluted liquid. Dilute only prior to immediate use.</p>
Host	Rabbit
Gene ID	1194146
Species	Bacteria
Reactivity Notes	Reactive with p35 from <i>Borrelia burgdorferi</i> . A BLAST analysis was used to suggest cross-reactivity with p35 from <i>B. burgdorferi</i> , <i>garinii</i> , and <i>afzelii</i> sources based on 100% homology with the immunizing sequence.. Cross-reactivity with p35 from other sources has not been determined
Immunogen	MBP-fusion protein corresponding to <i>Borrelia burgdorferi</i> p35 protein. (Uniprot: O50687)
Product Application Details	
Applications	Western Blot, ELISA
Recommended Dilutions	Western Blot 1:1000, ELISA 1:5000
Application Notes	This protein-A purified antibody has been tested for use in Western blotting and ELISA. Specific conditions for reactivity should be optimized by the user. Expect a band approximately 27.1 kDa in size corresponding to <i>Borrelia burgdorferi</i> OspA protein by Western blotting in the appropriate cell lysate or extract.

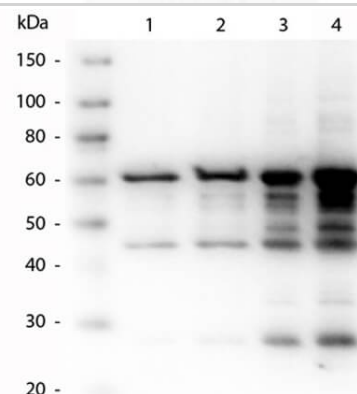


## Images

Western Blot: p35 Antibody [NBP2-21650] - Detection of 0.1 ug of recombinant p35 protein. Lane 1: Molecular weight markers. Lane 2: MBP-p35 fusion protein. Lane 3: MBP alone. Protein was run on a 4-20% gel, then transferred to 0.45 um nitrocellulose. After blocking with 1% BSA-TTBS overnight at 4C, primary antibody was used at 1:1000 at room temperature for 30 min. HRP-conjugated Goat-Anti-Rabbit secondary antibody was used at 1:40,000 in Blocking Buffer and imaged on the 4000 imaging system.



Western Blot of Rabbit anti-p35 antibody. Lane 1: p35 recombinant protein 50 ng load. Lane 2: p35 recombinant protein 100 ng load. Lane 3: p35 recombinant protein 250 ng load. Lane 4: p35 recombinant protein 500 ng load. Primary antibody: p35 antibody at 1:1,000 for overnight at 4C. Secondary antibody: Peroxidase rabbit secondary antibody at 1:40,000 for 30 min at RT. Block for 30 min at RT. Predicted/Observed size: 60 kDa, 60 kDa for p35. Other band(s): p35 splice variants and isoforms.





### **Novus Biologicals USA**

10730 E. Briarwood Avenue  
Centennial, CO 80112  
USA  
Phone: 303.730.1950  
Toll Free: 1.888.506.6887  
Fax: 303.730.1966  
nb-customerservice@bio-techne.com

### **Bio-Techne Canada**

21 Canmotor Ave  
Toronto, ON M8Z 4E6  
Canada  
Phone: 905.827.6400  
Toll Free: 855.668.8722  
Fax: 905.827.6402  
canada.inquires@bio-techne.com

### **Bio-Techne Ltd**

19 Barton Lane  
Abingdon Science Park  
Abingdon, OX14 3NB, United Kingdom  
Phone: (44) (0) 1235 529449  
Free Phone: 0800 37 34 15  
Fax: (44) (0) 1235 533420  
info.EMEA@bio-techne.com

### **General Contact Information**

www.novusbio.com  
Technical Support: nb-technical@bio-  
techne.com  
Orders: nb-customerservice@bio-techne.com  
General: novus@novusbio.com

### **Products Related to NBP2-21650**

---

HAF008	Goat anti-Rabbit IgG Secondary Antibody [HRP]
NB7160	Goat anti-Rabbit IgG (H+L) Secondary Antibody [HRP]
NBP2-24891	Rabbit IgG Isotype Control

---

### **Limitations**

This product is for research use only and is not approved for use in humans or in clinical diagnosis. Primary Antibodies are guaranteed for 1 year from date of receipt.

For more information on our 100% guarantee, please visit [www.novusbio.com/guarantee](http://www.novusbio.com/guarantee)

Earn gift cards/discounts by submitting a review: [www.novusbio.com/reviews/submit/NBP2-21650](http://www.novusbio.com/reviews/submit/NBP2-21650)

Earn gift cards/discounts by submitting a publication using this product:  
[www.novusbio.com/publications](http://www.novusbio.com/publications)

