

# Product Datasheet

## mGluR2/3 Antibody NBP2-21064

Unit Size: 0.1 ml

Aliquot and store at -20C or -80C. Avoid freeze-thaw cycles.

[www.novusbio.com](http://www.novusbio.com)



[technical@novusbio.com](mailto:technical@novusbio.com)

Protocols, Publications, Related Products, Reviews, Research Tools and Images at:  
[www.novusbio.com/NBP2-21064](http://www.novusbio.com/NBP2-21064)

Updated 5/13/2021 v.20.1

Earn rewards for product  
reviews and publications.

Submit a publication at [www.novusbio.com/publications](http://www.novusbio.com/publications)

Submit a review at [www.novusbio.com/reviews/destination/NBP2-21064](http://www.novusbio.com/reviews/destination/NBP2-21064)



**NBP2-21064**

mGluR2/3 Antibody

**Product Information**

<b>Unit Size</b>	0.1 ml
<b>Concentration</b>	This product is unpurified. The exact concentration of antibody is not quantifiable.
<b>Storage</b>	Aliquot and store at -20C or -80C. Avoid freeze-thaw cycles.
<b>Clonality</b>	Polyclonal
<b>Preservative</b>	0.1% Sodium Azide
<b>Isotype</b>	IgG
<b>Purity</b>	Unpurified
<b>Buffer</b>	Whole antisera with Tris-Glycine (pH 7.8) and 1.0% BSA

**Product Description**

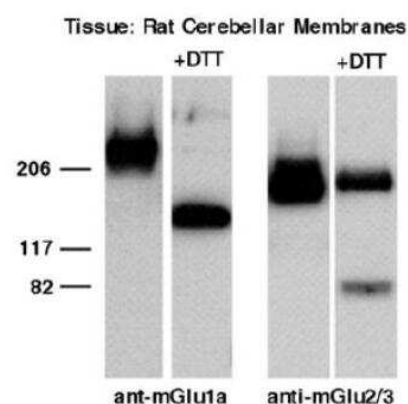
<b>Host</b>	Rabbit
<b>Gene ID</b>	2912
<b>Gene Symbol</b>	GRM2
<b>Species</b>	Mouse, Rat
<b>Reactivity Notes</b>	Rat and Mouse.
<b>Specificity/Sensitivity</b>	This antibody recognizes a conserved sequence in both metabotropic glutamate receptor 2 and metabotropic glutamate receptor 3.
<b>Immunogen</b>	NGREVVDSTTSSL Corresponding to the carboxy-terminus of rat mGluR2

**Product Application Details**

<b>Applications</b>	Western Blot, Immunocytochemistry/ Immunofluorescence, Immunohistochemistry, Immunohistochemistry-Paraffin
<b>Recommended Dilutions</b>	Western Blot 1:250-1:500, Immunohistochemistry 1:30-1:100, Immunocytochemistry/ Immunofluorescence 1:30-1:100, Immunohistochemistry-Paraffin 1:10-1:500
<b>Application Notes</b>	Immunohistochemistry: Antiserum was used on perfusion fixed tissue. Perfusion: 1) calcium-free Tyrode's solution, 2) paraformaldehyde-picric acid fixative, and 3) 10% sucrose in PBS as a cryo-protectant. Desired tissues were dissected and stored overnight in 10% sucrose in PBS.

**Images**

Western Blot: metabotropic Glutamate Receptor 2/3 Antibody [NBP2-21064] - Rat brain shows bands migrating at Mr=100,000 and 190,000 which may be a dimer of the smaller band.





### **Novus Biologicals USA**

10730 E. Briarwood Avenue  
Centennial, CO 80112  
USA  
Phone: 303.730.1950  
Toll Free: 1.888.506.6887  
Fax: 303.730.1966  
nb-customerservice@bio-techne.com

### **Bio-Techne Canada**

21 Canmotor Ave  
Toronto, ON M8Z 4E6  
Canada  
Phone: 905.827.6400  
Toll Free: 855.668.8722  
Fax: 905.827.6402  
canada.inquires@bio-techne.com

### **Bio-Techne Ltd**

19 Barton Lane  
Abingdon Science Park  
Abingdon, OX14 3NB, United Kingdom  
Phone: (44) (0) 1235 529449  
Free Phone: 0800 37 34 15  
Fax: (44) (0) 1235 533420  
info.EMEA@bio-techne.com

### **General Contact Information**

[www.novusbio.com](http://www.novusbio.com)  
Technical Support: nb-technical@bio-techne.com  
Orders: nb-customerservice@bio-techne.com  
General: novus@novusbio.com

### **Limitations**

This product is for research use only and is not approved for use in humans or in clinical diagnosis. Primary Antibodies are guaranteed for 1 year from date of receipt.

For more information on our 100% guarantee, please visit [www.novusbio.com/guarantee](http://www.novusbio.com/guarantee)

Earn gift cards/discounts by submitting a review: [www.novusbio.com/reviews/submit/NBP2-21064](http://www.novusbio.com/reviews/submit/NBP2-21064)

Earn gift cards/discounts by submitting a publication using this product:  
[www.novusbio.com/publications](http://www.novusbio.com/publications)

