

Product Datasheet

WIPI2 Antibody NBP2-20906

Unit Size: 0.1 ml

Aliquot and store at -20C or -80C. Avoid freeze-thaw cycles.

www.novusbio.com



technical@novusbio.com

Protocols, Publications, Related Products, Reviews, Research Tools and Images at:
www.novusbio.com/NBP2-20906

Updated 5/3/2018 v.20.1

Earn rewards for product
reviews and publications.

Submit a publication at www.novusbio.com/publications

Submit a review at www.novusbio.com/reviews/destination/NBP2-20906



NBP2-20906

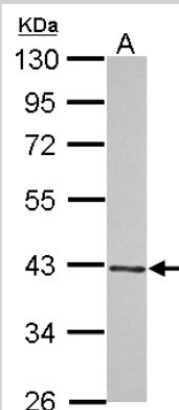
WIPI2 Antibody

Product Information	
Unit Size	0.1 ml
Concentration	Concentrations vary lot to lot. See vial label for concentration. If unlisted please contact technical services.
Storage	Aliquot and store at -20C or -80C. Avoid freeze-thaw cycles.
Clonality	Polyclonal
Preservative	0.01% Thimerosal
Isotype	IgG
Purity	Immunogen affinity purified
Buffer	PBS (pH 7.0), 1.0% BSA and 20% Glycerol
Target Molecular Weight	49 kDa
Product Description	
Host	Rabbit
Gene ID	26100
Gene Symbol	WIPI2
Species	Human
Reactivity Notes	Expected cross reactivity based on sequence homology: Xenopus laevis (87%).
Immunogen	Recombinant protein encompassing a sequence within the center region of human WIPI2. The exact sequence is proprietary.
Product Application Details	
Applications	Western Blot, Flow Cytometry, Immunocytochemistry/Immunofluorescence, Immunohistochemistry, Immunohistochemistry-Paraffin
Recommended Dilutions	Western Blot 1:500-1:3000, Flow Cytometry 1:10 - 1:1000, Immunohistochemistry 10 - 1:500, Immunocytochemistry/Immunofluorescence 1:100-1:1000, Immunohistochemistry-Paraffin 1:100-1:1000

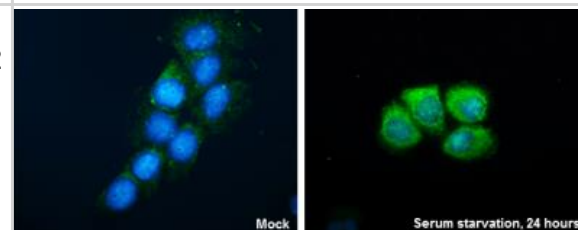


Images

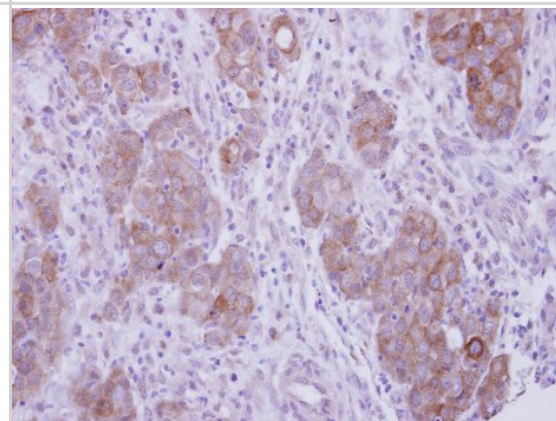
Western Blot: WIPI2 Antibody [NBP2-20906] - Sample (30 ug of whole cell lysate) A: A431 10% SDS PAGE gel, diluted at 1:1000.



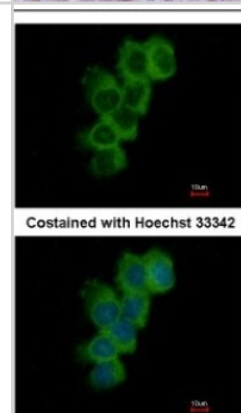
Immunocytochemistry/Immunofluorescence: WIPI2 Antibody [NBP2-20906] - A431 cells were fixed in ice-cold MeOH for 5 min. Green: WIPI2 protein stained by WIPI2 antibody diluted at 1:200. Blue: Hoechst 33342 staining.



Immunohistochemistry-Paraffin: WIPI2 Antibody [NBP2-20906] - Immunohistochemical analysis of paraffin-embedded Breast ca, using antibody at 1:250 dilution.



Immunocytochemistry/Immunofluorescence: WIPI2 Antibody [NBP2-20906] - Immunofluorescence analysis of methanol-fixed A431, using antibody at 1:500 dilution.





Novus Biologicals USA

10730 E. Briarwood Avenue
Centennial, CO 80112
USA
Phone: 303.730.1950
Toll Free: 1.888.506.6887
Fax: 303.730.1966
novus@novusbio.com

Novus Biologicals Canada

461 North Service Road West, Unit B37
Oakville, ON L6M 2V5
Canada
Phone: 905.827.6400
Toll Free: 855.668.8722
Fax: 905.827.6402
canada@novusbio.com

Novus Biologicals Europe

19 Barton Lane
Abingdon Science Park
Abingdon, OX14 3NB, United Kingdom
Phone: (44) (0) 1235 529449
Free Phone: 0800 37 34 15
Fax: (44) (0) 1235 533420
info@bio-techne.com

General Contact Information

www.novusbio.com
Technical Support: technical@novusbio.com
Orders: orders@novusbio.com
General: novus@novusbio.com

Limitations

This product is for research use only and is not approved for use in humans or in clinical diagnosis. Primary Antibodies are guaranteed for 1 year from date of receipt.

For more information on our 100% guarantee, please visit www.novusbio.com/guarantee

Earn gift cards/discounts by submitting a review: www.novusbio.com/reviews/submit/NBP2-20906

Earn gift cards/discounts by submitting a publication using this product:
www.novusbio.com/publications

