

Product Datasheet

TET3 Antibody NBP2-20602

Unit Size: 0.1 ml

Aliquot and store at -20C or -80C. Avoid freeze-thaw cycles.

www.novusbio.com



technical@novusbio.com

Reviews: 1 Publications: 12

Protocols, Publications, Related Products, Reviews, Research Tools and Images at:
www.novusbio.com/NBP2-20602

Updated 10/23/2024 v.20.1

**Earn rewards for product
reviews and publications.**

Submit a publication at www.novusbio.com/publications

Submit a review at www.novusbio.com/reviews/destination/NBP2-20602



NBP2-20602**TET3 Antibody****Product Information**

Unit Size	0.1 ml
Concentration	Concentrations vary lot to lot. See vial label for concentration. If unlisted please contact technical services.
Storage	Aliquot and store at -20C or -80C. Avoid freeze-thaw cycles.
Clonality	Polyclonal
Preservative	0.025% Proclin 300
Isotype	IgG
Purity	Antigen Affinity-purified
Buffer	PBS, 1% BSA, 20% Glycerol
Target Molecular Weight	179 kDa

Product Description

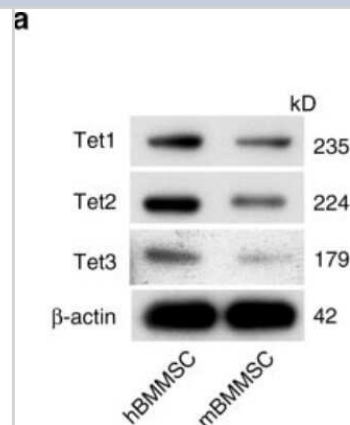
Host	Rabbit
Gene ID	200424
Gene Symbol	TET3
Species	Human, Mouse, Rat, Bovine, Xenopus
Reactivity Notes	Use in Rat reported in scientific literature (PMID:34246869)
Immunogen	Recombinant protein encompassing a sequence within the C-terminus region of human TET3. The exact sequence is proprietary.

Product Application Details

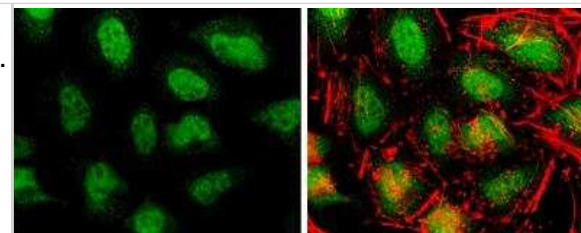
Applications	Western Blot, Flow Cytometry, Immunocytochemistry/ Immunofluorescence, Immunohistochemistry, Immunohistochemistry-Paraffin, Immunoprecipitation, Chromatin Immunoprecipitation (ChIP), Immunohistochemistry Whole-Mount
Recommended Dilutions	Western Blot 1:1000-1:10000, Flow Cytometry Reported in scientific literature (PMID:34246869), Immunohistochemistry 1:100-1:1000, Immunocytochemistry/ Immunofluorescence 1:100-1:1000, Immunoprecipitation 1:500-1:1000, Immunohistochemistry-Paraffin 1:100-1:1000, Immunohistochemistry Whole-Mount Assay dependent, Chromatin Immunoprecipitation (ChIP) Assay dependent

Images

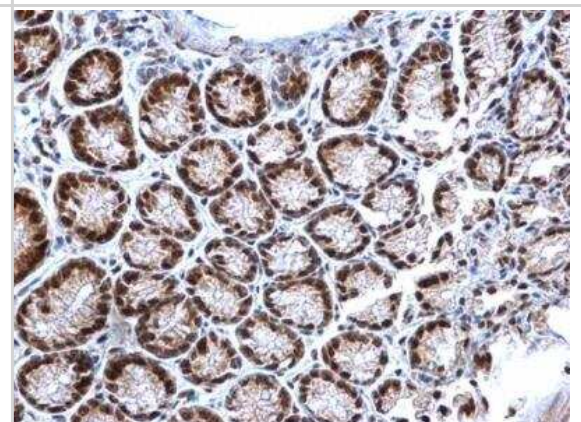
Western Blot: TET3 Antibody [NBP2-20602] - BMMSCs express Tet1, Tet2, and Tet3. Both human (h) and mouse (m) BMMSCs expressed Tet1, Tet2, and Tet3, as assessed by western blotting. Image collected and cropped by CiteAb from the following publication (<http://www.nature.com/articles/s41467-018-04464-6>) licensed under a CC-BY license.



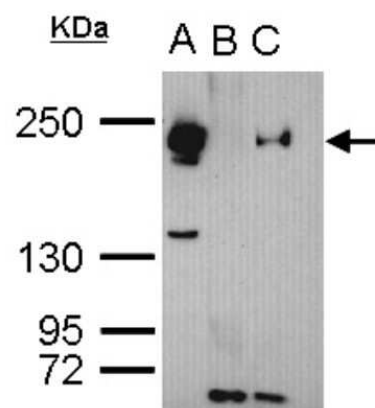
Immunocytochemistry/Immunofluorescence: TET3 Antibody [NBP2-20602] - HeLa cells were fixed in 4% paraformaldehyde at RT for 15 min. Green: TET3 protein stained by TET3 antibody [C3], C-term diluted at 1:400. Red: phalloidin, a cytoskeleton marker, diluted at 1:50.



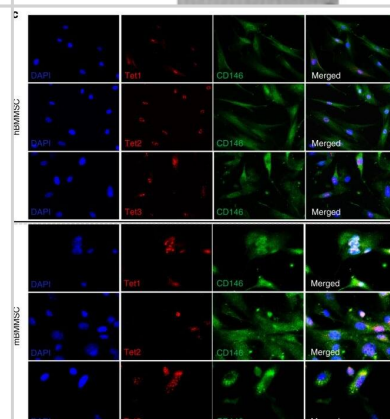
Immunohistochemistry-Paraffin: TET3 Antibody [NBP2-20602] - Mouse colon. TET3 stained by TET3 antibody [C3], C-term diluted at 1:500. Antigen Retrieval: Trilogy™ (EDTA based) buffer, 15min.



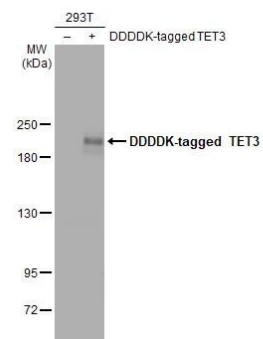
Immunoprecipitation: TET3 Antibody [NBP2-20602] - Sample: cell lysate/extract of TET3 gene transfected 293T cells A. Cell lysate/extract of transfected 293T cell B. Control with 2 ug of preimmune rabbit IgG C. Immunoprecipitation of TET3 by 2 ug of TET3 antibody 5% SDS-PAGE The immunoprecipitated TET3 protein was detected by TET3 antibody diluted at 1:1000. anti-rabbit IgG was used as a secondary reagent.



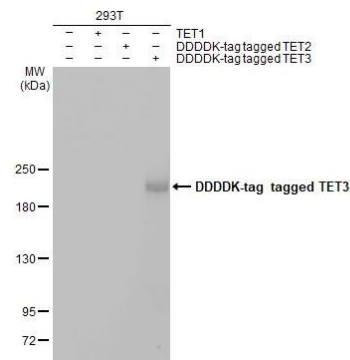
Immunocytochemistry/ Immunofluorescence: TET3 Antibody [NBP2-20602] - BMMSCs express Tet1, Tet2, & Tet3. a, b Both human (h) & mouse (m) BMMSCs expressed Tet1, Tet2, & Tet3, as assessed by western blotting (a) & qPCR (b). c Immunocytofluorescent staining showed that CD146-positive BMMSCs expressed Tet1, Tet2, & Tet3. Scale bar, 50 μ m. Results are from three independent experiments. ***p < 0.001; p values calculated using two-tailed Student's t test (mean \pm SD) Image collected & cropped by CiteAb from the following publication (<https://www.nature.com/articles/s41467-018-04464-6>), licensed under a CC-BY license. Not internally tested by Novus Biologicals.



Western Blot: TET3 Antibody [NBP2-20602] - Non-transfected (-) and transfected (+) 293T whole cell extracts (30 ug) were separated by 5% SDS-PAGE, and the membrane was blotted with TET3 antibody [C3], C-term (NBP2-20602) diluted at 1:5000. The HRP-conjugated anti-rabbit IgG antibody was used to detect the primary antibody.



Western Blot: TET3 Antibody [NBP2-20602] - Non-transfected (-) and transfected (+) 293T whole cell extracts (30 ug) were separated by 5% SDS-PAGE, and the membrane was blotted with TET3 antibody [C3], C-term (NBP2-20602) diluted at 1:5000. The HRP-conjugated anti-rabbit IgG antibody was used to detect the primary antibody, and the signal was developed with Trident ECL plus-Enhanced.



Publications

Parik Kakani, Shruti Ganesh Dhamdhere, Deepak Pant, Rushikesh Joshi, Jharna Mishra, Atul Samaiya, Sanjeev Shukla Hypoxia-induced CTCF promotes EMT in breast cancer. Cell reports 2024-06-18 [PMID: 38900639]

Zhang K, Lan T, Lin F et al. Effect of vitrification on protein O-GlcNAcylation in mouse metaphase II oocytes Reproduction (Cambridge, England) 2023-10-01 [PMID: 37903183]

Jia M, Li Z, Pan M et al. LINC-PINT suppresses aggressiveness of thyroid cancer by downregulating miR-767-5p to induce TET2 expression Mol Ther Nucleic Acids 2020-11-24 [PMID: 33230437]

Liu X, Cui H The palliative effects of folic acid on retinal microvessels in diabetic retinopathy via regulating the metabolism of DNA methylation and hydroxymethylation Bioengineered 2021-12-01 [PMID: 34874218] (Chemotaxis, Rat)

Deshpande Sss, Nemani H, Balasinar Nh High fat diet-induced- and genetically inherited- obesity differential alters DNA demethylation pathways in the germline of adult male rats Reproductive biology 2021-07-08 [PMID: 34246869] (FLOW)

Wu SL, Zhang X, Chang M et al. Genome-wide 5-hydroxymethylcytosine Profiling Analysis Identifies MAP7D1 as A Novel Regulator of Lymph Node Metastasis in Breast Cancer Genomics, proteomics & bioinformatics 2021-03-11 [PMID: 33716151] (IF/IHC, Human)

Cao D, Jia Z, Wu Y et al. Demethylation of the RB1 promoter concomitant with reactivation of TET2 and TET3 impairs gastric carcinogenesis in K19-Wnt1/C2mE transgenic mice Life Sci 2020-10-12 [PMID: 33058920] (WB, IHC-P, Human, Mouse)

Gao J, Wang H, Shen J et al. Mutual regulation between GDF11 and TET2 prevents senescence of mesenchymal stem cells bioRxiv 2020-01-01 (WB, Human)

Atlante S, Visintin A, Marini E et al. α-ketoglutarate dehydrogenase inhibition counteracts breast cancer-associated lung metastasis. Cell Death Dis 2018-07-09 [PMID: 29988033] (WB, Mouse)

Le Bras A, Yu B, Issa Bhaloo S et al. Adventitial Sca1+ Cells Transduced With ETV2 Are Committed to the Endothelial Fate and Improve Vascular Remodeling After Injury Arterioscler. Thromb. Vasc. Biol. [PMID: 29191922] (ICC/IF, Mouse)

Yang R, Yu T, Kou X et al. Tet1 and Tet2 maintain mesenchymal stem cell homeostasis via demethylation of the P2rx7 promoter Nat Commun 2018-06-01 [PMID: 29858571] (WB, Mouse, Human)

Ma M, Zhou QJ, Xiong Y, Li B. Preeclampsia is associated with hypermethylation of IGF-1 promoter mediated by DNMT1. Am J Transl Res. 2018-01-15 [PMID: 29422991] (IHC-P, Human)





Novus Biologicals USA

10730 E. Briarwood Avenue
Centennial, CO 80112
USA
Phone: 303.730.1950
Toll Free: 1.888.506.6887
Fax: 303.730.1966
nb-customerservice@bio-techne.com

Bio-Techne Canada

21 Canmotor Ave
Toronto, ON M8Z 4E6
Canada
Phone: 905.827.6400
Toll Free: 855.668.8722
Fax: 905.827.6402
canada.inquires@bio-techne.com

Bio-Techne Ltd

19 Barton Lane
Abingdon Science Park
Abingdon, OX14 3NB, United Kingdom
Phone: (44) (0) 1235 529449
Free Phone: 0800 37 34 15
Fax: (44) (0) 1235 533420
info.EMEA@bio-techne.com

General Contact Information

www.novusbio.com
Technical Support: nb-technical@bio-
techne.com
Orders: nb-customerservice@bio-techne.com
General: novus@novusbio.com

Products Related to NBP2-20602

HAF008	Goat anti-Rabbit IgG Secondary Antibody [HRP]
NB7160	Goat anti-Rabbit IgG (H+L) Secondary Antibody [HRP]
NBP2-24891	Rabbit IgG Isotype Control
NBP2-13427PEP	TET3 Recombinant Protein Antigen

Limitations

This product is for research use only and is not approved for use in humans or in clinical diagnosis. Primary Antibodies are guaranteed for 1 year from date of receipt.

For more information on our 100% guarantee, please visit www.novusbio.com/guarantee

Earn gift cards/discounts by submitting a review: www.novusbio.com/reviews/submit/NBP2-20602

Earn gift cards/discounts by submitting a publication using this product:
www.novusbio.com/publications

