

# Product Datasheet

## SUV3L1 Antibody - BSA Free

### NBP2-20539

Unit Size: 0.1 ml

Aliquot and store at -20C or -80C. Avoid freeze-thaw cycles.

[www.novusbio.com](http://www.novusbio.com)



[technical@novusbio.com](mailto:technical@novusbio.com)

Protocols, Publications, Related Products, Reviews, Research Tools and Images at:  
[www.novusbio.com/NBP2-20539](http://www.novusbio.com/NBP2-20539)

Updated 9/9/2025 v.20.1

Earn rewards for product  
reviews and publications.

Submit a publication at [www.novusbio.com/publications](http://www.novusbio.com/publications)

Submit a review at [www.novusbio.com/reviews/destination/NBP2-20539](http://www.novusbio.com/reviews/destination/NBP2-20539)



**NBP2-20539**

SUV3L1 Antibody - BSA Free

Product Information	
Unit Size	0.1 ml
Concentration	Concentrations vary lot to lot. See vial label for concentration. If unlisted please contact technical services.
Storage	Aliquot and store at -20C or -80C. Avoid freeze-thaw cycles.
Clonality	Polyclonal
Preservative	0.01% Thimerosal
Isotype	IgG
Purity	Antigen Affinity-purified
Buffer	0.1M Tris (pH 7), 0.1M Glycine, 20% Glycerol
Target Molecular Weight	88 kDa
Product Description	
Description	Novus Biologicals Rabbit SUV3L1 Antibody - BSA Free (NBP2-20539) is a polyclonal antibody validated for use in WB and ICC/IF. All Novus Biologicals antibodies are covered by our 100% guarantee.
Host	Rabbit
Gene ID	6832
Gene Symbol	SUPV3L1
Species	Human
Immunogen	Recombinant protein encompassing a sequence within the C-terminus region of human SUV3L1. The exact sequence is proprietary.
Product Application Details	
Applications	Western Blot, Immunocytochemistry/ Immunofluorescence
Recommended Dilutions	Western Blot 1:500-1:3000, Immunocytochemistry/ Immunofluorescence 1:100-1:1000



## Images

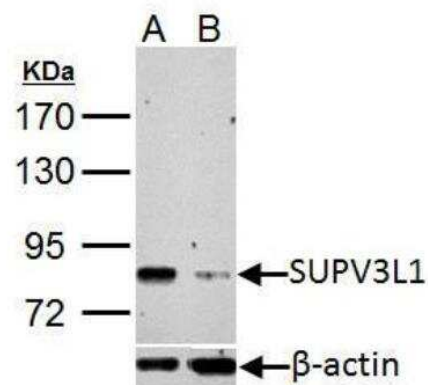
Western Blot: SUV3L1 Antibody [NBP2-20539] - SUPV3L1 antibody [C2C3], C-term detects SUPV3L1 protein by Western blot analysis.

Upper panel: SUPV3L1 antibody [C2C3], C-term

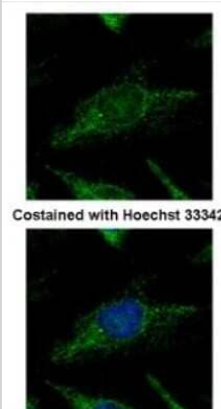
Lower panel: beta Actin antibody

A. 30 ug HeLa whole cell lysate/extract

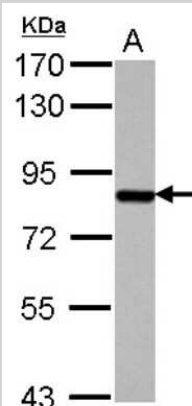
B. 30 ug whole cell lysate/extract of SUPV3L1 shRNA-transfected HeLa cells 7.5 % SDS-PAGE



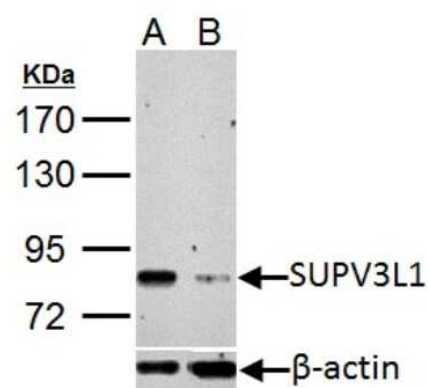
Immunocytochemistry/Immunofluorescence: SUV3L1 Antibody [NBP2-20539] - Confocal immunofluorescence analysis of methanol-fixed HeLa, using SUPV3L1 antibody (Green) at 1:500 dilution.



Western Blot: SUV3L1 Antibody [NBP2-20539] - Sample (30 ug of whole cell lysate) A: PC-3 7.5% SDS PAGE gel, diluted at 1:1000.



Western Blot: SUV3L1 Antibody [NBP2-20539] - Upper panel: SUPV3L1 antibody [C2C3], C-term Lower panel: beta Actin antibody A. 30 ug HeLa whole cell lysate/extract B. 30 ug whole cell lysate/extract of SUPV3L1 shRNA-tran





### **Novus Biologicals USA**

10730 E. Briarwood Avenue  
Centennial, CO 80112  
USA  
Phone: 303.730.1950  
Toll Free: 1.888.506.6887  
Fax: 303.730.1966  
nb-customerservice@bio-techne.com

### **Bio-Techne Canada**

21 Canmotor Ave  
Toronto, ON M8Z 4E6  
Canada  
Phone: 905.827.6400  
Toll Free: 855.668.8722  
Fax: 905.827.6402  
canada.inquires@bio-techne.com

### **Bio-Techne Ltd**

19 Barton Lane  
Abingdon Science Park  
Abingdon, OX14 3NB, United Kingdom  
Phone: (44) (0) 1235 529449  
Free Phone: 0800 37 34 15  
Fax: (44) (0) 1235 533420  
info.EMEA@bio-techne.com

### **General Contact Information**

[www.novusbio.com](http://www.novusbio.com)  
Technical Support: nb-technical@bio-techne.com  
Orders: nb-customerservice@bio-techne.com  
General: novus@novusbio.com

### **Products Related to NBP2-20539**

---

HAF008	Goat anti-Rabbit IgG Secondary Antibody [HRP]
NB7160	Goat anti-Rabbit IgG (H+L) Secondary Antibody [HRP]
NBP2-24891	Rabbit IgG Isotype Control
NBP2-34047PEP	SUV3L1 Recombinant Protein Antigen

---

### **Limitations**

This product is for research use only and is not approved for use in humans or in clinical diagnosis. Primary Antibodies are guaranteed for 1 year from date of receipt.

For more information on our 100% guarantee, please visit [www.novusbio.com/guarantee](http://www.novusbio.com/guarantee)

Earn gift cards/discounts by submitting a review: [www.novusbio.com/reviews/submit/NBP2-20539](http://www.novusbio.com/reviews/submit/NBP2-20539)

Earn gift cards/discounts by submitting a publication using this product:  
[www.novusbio.com/publications](http://www.novusbio.com/publications)

